


DELIVERED
WEEKLY TO
15,200
GLOBAL
READERS*

Like and
follow us on 

ISSUE 707 | **May 19, 2022**

timber & FORESTRY *e*news

timberandforestrynews.com



Bird populations 'granted' a new life in forest plantations

COVER STORY P 3



ForestFit
SETTING INDUSTRY
STANDARDS
www.forestfit.com.au



Responsible
Wood RW/1-10-1

Snap and win!
Photo contest
now open.
#rwphotocontest22



Click here.



**MARGULES
GROOME**

FIRST FOR FORESTRY CONSULTING
www.margulesgroome.com



TIMBER NSW
Action, not words.

Follow us on Facebook for
up to date news and features 



Building a strong industry for you
CAREERS / TRAINING / SAFETY / SERVICE

Contact us on
1800 822 621

Ukraine conflict disrupts NZ timber exports across the full trading chain: logs, sawn timber and EWPs

THE invasion of Ukraine has the potential to disrupt New Zealand's timber exports, as Russia looks to expand into China in the face of trade sanctions from western nations.

Niagara Sawmilling sales manager Jamie Barton said the New Zealand group was keeping a close eye on the trade relationship between Russia and key export markets in Vietnam and China on the back of European Union trade sanctions against Russia.

Russia was a large exporter of timber products to Europe, Mr Barton said, and it was mindful that Russia might need to increase supply into markets that Niagara typically exported to such as Vietnam and China in response to sanctions.

"Vietnam has strong relationships with Russia and has not placed any sanctions against them," Mr Barton said.

"The risk for us is that if Russia decides to increase supply into Vietnam and China, this could disrupt



Jamie Barton... keeping a close eye on trade-relationships between Russia and key export markets in Vietnam and China.

demand. It hasn't happened yet, but we are watching closely."

About 48% of New Zealand's forestry exports went to China in 2018.

Independent forestry consultant Margules Groome, reporting on the invasion in March, said there could be a pivot of Russian exports of log and timber from Europe to China.

New Zealand and Europe are the two largest suppliers of softwood logs to China, while Russia is the largest supplier of timber.

However, the biggest



Dennis Neilson... cautions about putting too much weight on the impact of the conflict for the major global supply chain.

challenge is shipping, with costs more than doubling for most destinations in the past 12 months.

"Shipping space into Australia is the most expensive and most disrupted I have seen in the nine years I have been with Niagara and America is in the same boat," Jamie Barton said.

Last year, Southland businesses described

increases of up to 100% on the cost of container ships compared to pre-Covid prices.

Dennis Neilson, DANA director and long-time Russian wood products trade observer, agrees that the Ukraine conflict is definitely disrupting wood products trade, including logs, sawn timber and engineered wood products.

However (apart from perhaps the European and Australian timber and wood panels trade; and the pulp log trade from Russia to Finland), he cautions about putting too much weight on the impact of the conflict for the major global supply chain and shipping chaos which is occurring in mid-2022.

Neilson points, for instance, to the globally-serious disruptions to manufacturing and trade caused by the unprecedented Covid-related lockdowns occurring in many parts of China.

The world's largest port Shanghai has effectively been all but closed to trade for months.

“THE RISK FOR US IS THAT RUSSIA INCREASES SUPPLY TO VIETNAM, CHINA”

Cont P 15



THE CHOICE IS YOURS.

Following the awarding of a Global GreenRate Level A certification, MicroPro Wood Treatment Technology has recently been awarded a GoldHEALTH rating with its recently published Global GreenTag Level A Product Health Declaration™ (PHD™).

The GreenTag PHD is the first health transparency tool in the world to assess human health concerns directly, rating the health impacts of a final product – and not just the hazards of a product's ingredients.

For more information call us now on 1800 088 809.



MicroPro® is a registered trademark of Koppers Inc. or its subsidiaries. MicroPro® timber products are produced by independently owned and operated wood preserving facilities. © 2019 Koppers Performance Chemicals Australia Pty Ltd. Global GreenRate, GoldHEALTH, Global GreenTag and GreenTag PHD are registered trademarks operated under licence by Global GreenTag Pty Ltd.

Birdlife monitoring programs dispel notion that nation's forest plantations are biological deserts

Improved management practices contribute to a sustainable resource ... and sustainable biodiversity

A SUCCESSFUL bird monitoring program supported by the Responsible Wood Community Grants Program and undertaken by Birdlife Australia at the request of PF Olsen Australia has dispelled the notion that forest plantations are 'biological deserts'.

In 2015, BirdLife Australia began monitoring bird populations annually in hardwood plantations in western Victoria and has done similar work in Western Australia since 2017. The community grants project extended the scope of the monitoring program into softwood plantations in southern NSW. In 2020, Birdlife Australia received \$10,500 under the Responsible Wood 2020 Community Grants program.

Thirty-five survey transects were surveyed in November last year. A total of 585 individual birds of 36 species were recorded across a spread of softwood plantations transects, control transects in the surrounding national parks and reserves and native remnants within the plantation matrix. Using protocols established in western Victoria and Western Australia, four main indexes were reviewed – a Shannon index at both a landscape

and site scale; the number birds in 14 foraging guilds; the number of conservation-significant bird species; and analysis of common species. These sites will be surveyed in future years.

A single species of conservation concern was the gang-gang cockatoo (*Callocephalon fimbriatum*), which has only recently been listed by the federal Environment Protection and Biodiversity Conservation Act.

BirdLife Australia analytics and scientific publications coordinator Dr Kerry Herman explains:

"We need to understand what native bird species are present within plantations before we can effectively manage these values in line with industry needs, so we set up a project to collect the data.

"What we have learnt through ongoing monitoring is that while there are differences in the assemblages of birds found in plantations compared to native forest, the plantation themselves also provide usable habitat for birds. We have nesting records as well as foraging information."

Dr Herman said plantations were not the 'biological



David Bennett... the monitoring program seeks to examine changes in birdlife that can be attributed solely to plantation management.

deserts' many had claimed them to be.

"By better understanding how birds use plantations, improved management practices could contribute to not only a sustainable timber resource, but also sustainable biodiversity," she said.

The aim of the program is

Cont P 8

“WE HAVE NESTING RECORDS AS WELL AS FORAGING INFORMATION

**This election
VOTE TO
SUPPORT
FOREST
INDUSTRIES**



Australian
Forest
Products
Association



www.ausfpa.com.au



enquiries@ausfpa.com.au



02 6285 3833



PO Box 239, Deakin West
ACT 2600 Australia

Five new research projects for regional forestry hub will build a stronger industry in Queensland

THE South and Central Queensland Regional Forestry Hub has engaged forestry and technical experts to deliver five new research projects to assist in increasing the productivity and sustainability of the region's forest and timber industry.



South and Central Queensland Regional Forestry Hub steering committee... Mick Stephens and Clarissa Brandt, Timber Queensland, Greg Phipps, EcoCottages, James Hyne, Hyne Timber, Greg Leach, AgForce Queensland, Curly Tatnell, DTM Timber, Kerry Fullarton, hub manager, and Dennis Biasotto, Laminex Australia.

Hub manager Kerry Fullarton said industry stakeholders had put considerable thought and planning into identifying projects the hub should support to build a stronger

industry. "It has been a pivotal year for the hub as we formalised our steering committee, identified priority themes and delivered a strategic review workshop to determine the

opportunities and barriers for the forestry and wood products sector in our region," Mrs Fullarton said.

"We also made significant progress facilitating working groups to develop expressions of interest for projects to be funded by the hub."

The key themes being addressed in the suite of new projects include native forest management; manufacturing competitiveness; and bioenergy and carbon.

The five projects and research providers are:

- A cost-benefit methodology and best practice approach to assessing the net benefits from multiple-use native forests - Indufor Asia Pacific (Australia) and Natural Capital Economics.
- Adhesive research for softwood and hardwood engineered wood products – Queensland Department of Agriculture and Fisheries.
- An evaluation and feasibility of new technologies and processes in the timber and wood products industry to deliver

a range of cost-competitive products – Foresion.

- An evaluation and feasibility of using new harvesting technologies and processes in Queensland's forestry operations – the University of Sunshine Coast.
- An assessment of the volumes of wood biomass residues and their potential uses and markets - the University of Sunshine Coast.

"These projects will enable the forestry and timber sector to grow and to create the most value for our stakeholders," Mrs Fullarton said.

"The successful proponents will reach out to stakeholders in the coming weeks for information and to seek valuable feedback on these projects," she said.

“SEEK VALUABLE FEEDBACK FROM STAKEHOLDERS”

The regional hub, established as part of the federal government's National Forest Industries Plan, is focused on leveraging and implementing projects to boost productivity and growth in the sector to meet Australia's future needs for wood and fibre in the next decade.

Need **creative** advertising solutions?

creative bird design

Contact // Zonya Bird
zonya@creativebirddesign.com

QUEENSLAND TIMBER INDUSTRY Awards
EXCELLENCE | RECOGNITION | CELEBRATION

Proudly organised by

Join us in celebrating the Queensland Timber Industry

21ST MAY 2022 | 6:30 PM - 11:30 PM
RYDGES, SOUTHBANK

Purchase Tickets

\$5 off each ticket purchased will be donated to the flood relief

Coalition offers best vision for forest industries

Election campaign has been the most successful for the sector in living memory

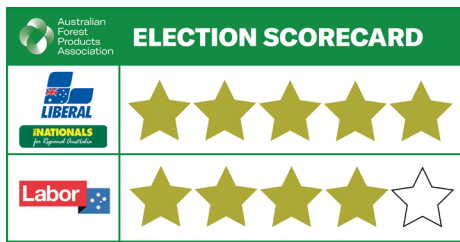
AN analysis by the Australian Forest Products Association of forest industry policy commitments by major parties ahead of

Saturday's poll has found that the Coalition has put forward the most comprehensive vision.

This analysis notes a record investment by the LNP that addresses many of the measures outlined in the sector's Growth Plan.

AFPA chair Greg McCormack said this election campaign had been the most successful for Australia's forest industries in living memory, with both the Coalition and Labor committing more than \$300 million in new investment for forest industries to support

BOTH PARTIES COMMIT OVER \$300M IN NEW INVESTMENT FOR THE SECTOR



innovation, boost timber manufacturing capacity and deliver new timber plantations to progress the One Billion trees goal, while helping ease product supply pressures.

"AFPA has scored the Coalition's forest industries plan five stars out of five ahead of Labor at four stars because of the leadership and prominence the Coalition has given forest industry policy, putting it at the centre of its economic and manufacturing policies," Mr McCormack said.

"The AFPA board believes the Coalition's policy initiative and early sector engagement on forest industry policy, framed by a cohesive narrative that positions Australia's sustainable forest industries as a growth sector that will be central to a low-emission circular



Greg McCormack... record investment by the LNP addresses many measures outlined in the sector's Growth Plan.

bio-economy, aligns strongly with our own vision for the future."

Since February, the Coalition – at press conferences fronted by the Prime Minister and Assistant Minister for Forestry Senator Jonno Duniam – has pledged more than \$300 million in new funding for forest industries that directly addresses the key policy priorities identified in AFPA's 'Plan for Growth'

More than \$200 million that has been provided for in the 2022-23 Budget, setting up a genuine contest with Labor on forestry policy this

election. These include:

- \$100 million for a new National Institute for Forest Products Innovation over five years, headquartered at the University of Tasmania's Launceston campus, to turbocharge R&D in renewable forest products for the 21st century
 - \$112.9 million in the Budget for wood processing innovation grants to boost timber supply and unlock new advanced manufacturing opportunities with our existing resource
 - \$86.2 million in the Budget to kick-start stalled new timber plantation growth to meet Australia's future timber needs
 - \$6.6 million to extend funding to the 11 regional forestry hubs for an additional two years
- The Labor Party has subsequently matched all of the Coalition's funding commitments and committed to honouring the programs already provided in the Budget.

"The AFPA board also

Cont P 11

White-eared Honeyeater (Photo Birdlife Australia)

Beautiful. Natural. Sustainable. Australian.

responsiblewood.org.au

Responsible Wood would like to congratulate the 2021 PF Olsen Australia and Birdlife Australia NSW Softwood Plantation Pilot Surveys.

Responsible Wood

RW/1-10-1

Housing industry welcomes PM's home ownership scheme: 'best form of security in future retirement'

PRIME Minister Scott Morrison's announcement this week that if re-elected the Liberal Party will allow Australians to access up to \$50,000 from their superannuation to fund a deposit to help them buy their first home is a welcome one, and an initiative that the Housing Industry Association has championed.

"Access to finance for a deposit is the biggest obstacle for Australians trying to buy their first home, especially those paying rent while saving for their deposit," HIA managing director Graham Wolfe said.

"This scheme builds on the many positive home ownership schemes now in place to support first home buyers achieve their aspiration to own a home," he said.

"It means that funds that are available to Australians via their super can be accessed to get their foot on the home ownership ladder.

"When the house is sold they can put the money back into their retirement



1/ **Scott Morrison's plan launched in Brisbane allows Australians to put \$50,000 of their super into buying their first home.**

2/ **Graham Wolfe... responsible, well thought-out plan.**



to unveil the Super Home Buyer Scheme.

HIA's Graham Wolfe says owning your own home is the best form of security for future retirement.

"This scheme is a responsible, well thought-out plan to ensure that the equity Australians

fund with a proportion of the capital growth in value of their home.

"They are effectively borrowing from themselves."

The scheme could help home buyers get into the market much sooner as prices surge. They would also be in a position to get into the housing market when they were still young enough to get a bank loan with a 30-year term to pay it off. This becomes harder to obtain as a potential borrower ages.

Mr Morrison, Assistant Treasurer Michael Sukkar and Superannuation Minister Michael Sukkar claimed the scheme would slash by three

years, on average, the time it would take to save up for a mortgage deposit.

Australian property prices last year soared at the fastest annual pace since 1989 and saving up for that 20% mortgage deposit to buy a house typically takes more than a decade in most capital cities. With fewer Australians able to buy their first home in their 20s or 30s, the PM used the Liberal Party campaign launch in Brisbane on Sunday

“BUILDING ON POSITIVE OWNERSHIP SCHEMES”

hold in their super can be used effectively to ensure they own their home now and in retirement, and at the same time retain a managed approach to financial security," he said.

HIA's research earlier this year showed that Australians believe owning their own home is more important in helping them in retirement than their superannuation. "People who retire owning a home are much more likely to be financially secure in their retirement," Mr Wolfe said.

"The extension to the downsizer scheme is also welcome."

Investing in people ...

Grant award applications for 2022 are now open:

- Skill Development Support
- Scholarships
- Fellowships

Don't miss this opportunity – all details www.gottsteintrust.org

Applications close on Friday, 3rd June 2022.

To discuss your application ideas call Helen Murray 0419 991 424 or email: team@gottsteintrust.org

advancing the industry

JUNE

3: WFTN Qld strategic planning workshop – Hugh Hamilton Room, Construction Training Centre, Salisbury, QLD and via Zoom. 8-11 am. Setting priorities and agenda for progressing meaningful change for women in the forest and timber industries. Contact sarah@timberqueensland.com.au

10: Third time lucky! GTTIA Awards – Mount Gambier, SA. The GTTIA committee confirms the awards gala event will be held on June 10 at The Barn, Mount Gambier SA. Tickets on sale April 25 and for purchase online. Email: info@gttia.com

14: AFPA-Timber Queensland dinner – Rydges Southbank, Brisbane, QLD. Starts 6 pm. First national forest industries event in the new federal

parliamentary term. Tickets at <https://events.humanitix.com/afpa-quarterly-meetings-june-2022-including-the-afpa-and-timber-queensland-forest-industries-dinner>

16: Timber Queensland R&D field day – Brisbane, QLD. 8 am-2 pm. Showcase of current R&D from Queensland's three major research centres and their partners. Visit www.timberqueensland.com.au/events

21-22: Frame Australia Timber Offsite Construction – Crown Promenade Melbourne, VIC. New global 'hybrid' format. Choose from a selection of half-day and full-day programs. Virtual delegates can register for just one or more conference sessions. For further information and registration visit the website www.timberoffsiteconstruction.com

JULY

10-15: 65th The Society of Wood Science and Technology annual meeting – Salt/Peppers Mantra complex, Kingscliffe, NSW. SWST activities include publishing wood and fibre science and accrediting undergraduate wood science programs in North American, South America, Asia and Europe. Registration open at www.swst.org

SEPTEMBER

11-16: Gottstein Trust Understanding Wood Science Course – Sunday evening, September 11, 2022, in Albury, NSW, for the field trip component, ending on Friday, September 16, in Canberra. The course is fully booked and a wait list is operating on a first-in-first-served basis. Delivered in partnership with

the ANU. The course program can be downloaded at www.gottsteintrust.org

OCTOBER

20-22: Forestry Australia Symposium – Albury, NSW. Leading, adapting and reimagining: the future of forestry. Available in person or online www.forestryconference.com.au/

26-28: DANA-Ginkgo Global Woodchip and Biomass Trade Conference – Marriott Singapore Tang Plaza Hotel, Singapore. Focus on woodchips and biomass. (Venue to be advised). Website live and early bird registrations now open. Visit <https://danaevents.co.nz/2022singapore> Contact conference organiser Mariela Ferrari marielaferri@gmail.com

Two Qld field days focus on cypress and native forest management

PRIVATE Forestry Service Queensland has two great AgForce field days coming up in June focusing on general forest management for cypress and native forests at Claravale near Mitchell on the Western Downs and Doughboy, 24 km south of Gin Gin in the Bundaberg region.

The field days, both from 9 am to 3 pm, cover:

- The latest update on legislation, code of practice and vegetation mapping.

- Trigger maps and notification of a forest practice.
- Fire management, forest Assessment, current timber products and what they are worth
- Organising a harvest and working with contractors.
- Optimal tree stocking – selecting the best trees to retain to optimise grazing and timber production; managing grazing stocking levels in a

forest environment,

- Growth results from six thinning trials.

Location for the native forests day on June 28: Boomerang end of Doughboy Rd, Doughboy, 24 km south-west of Gin Gin. Contact: admin@pfsq.org.au or phone (07) 5483 6535, or 0428 457 322.

Location for the cypress and native forest management field day on June 30: Claravale

– 5003 Warrong (Toooloombilla) Rd, about 33 km north-east of Mitchell. Contacts: admin@pfsq.org.au (07) 5483 6535 or Sean Ryan 0428 457 322

The field days start in the shed going through general forest management theory, including legislation, fire, then it's out into the paddock to go through the application of the theory in the field.

Tea and coffee provided. Bring your own lunch, water and folding chair.

Do you crosscut timber packs at ±1mm accuracy
OR cut structural timber, panel products (MDF & LVL), paper rolls
OR produce pallet dimensions or studs on fixed lengths

HOLTEC has a solution for you

For more information contact:
 Ph: +64 9 416 8294
 Fax: +64 9 416 8296
 Email: sales@holtec.org
 Web: www.holtec.org

HOLTEC
 YOUR PARTNER FOR THE PERFECT CUT

Our Scope of Supply:

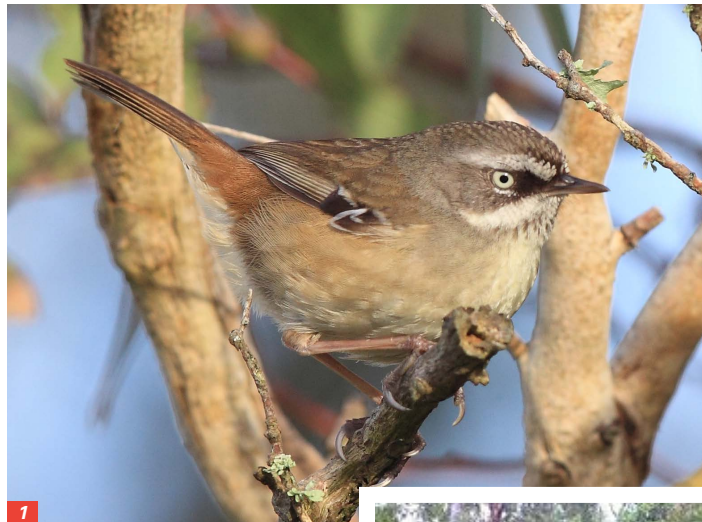
- Mobile and stationary chainsaws
- Timber crosscut stations
- Log cutting stations
- Circular saws
- Mechanisation
- Sorting lines
- Scanning and optimising systems
- Special systems

From P 3

to address the monitoring requirements under both FSC and Responsible Wood certification. The requirement is for biodiversity to be maintained and enhanced across the certified area.

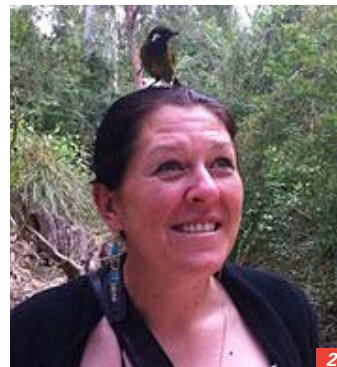
PF Olsen Australia risk and compliance manager David Bennett said the forest management company was seeking to make birdlife monitoring a standard part of its monitoring regime on all the certified forests it managed as a Responsible Wood certificate holder.

“The program that Dr Herman designed seeks to examine changes in birdlife that can be attributed solely



1/ White-browed scrub wren... a total of 585 individual birds of 36 species were recorded across a spread of softwood plantations.
Photo: Birdlife Australia

2/ Dr Kerry Herman... by better understanding how birds use plantations, improved management practices could contribute to not only a sustainable timber resource, but also sustainable biodiversity.



native vegetation.”

Responsible Wood will be launching its third instalment of its Community Grants Program later this year, aimed at helping local communities develop, design and implement small community-based projects in their local area in conjunction with their local Responsible Wood-certified forestry company.

The grants are assessed by an expert judging panel with community grants project manager Meagan Graham overseeing the program.

For more information visit www.responsiblewood.org.au/what-we-do/our-collective-impact/community-grants-program/

“ 36 SPECIES HAVE BEEN TRACKED OVER THE YEARS OF MONITORING

to plantation management,” he said.

“In order to understand and differentiate broader

landscape changes, observations are made at control sites in adjacent

On the cover: A single species of conservation concern is the gang-gang cockatoo, which has only recently been listed by the federal Environment Protection and Biodiversity Conservation Act. Photo: Birdlife Australia

Snap to it.

The Responsible Wood 2022 Photo Contest is now open. Entries close June 5, 2022.

We are inviting professional and amateur photographers to submit their best photos showcasing your local forest.* Responsible Wood is offering a cash prize of \$1000 for the winning photo. The top three photos will compete in the international 2022 PEFC Photographer of the Year Award!

Upload your photo(s) to Instagram using **#rwphotocontest22** – and that’s it!

* Photos must be taken from a Responsible Wood certified forest. For more information visit responsiblewood.org.au

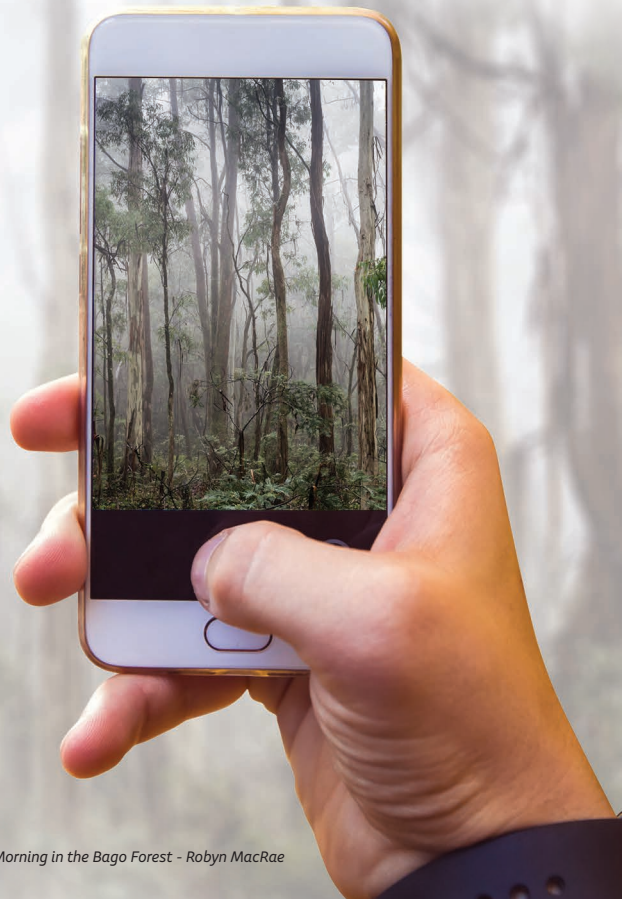


Photo: Early Morning in the Bago Forest - Robyn MacRae



Win with wood theme at PEFC talks in Ireland

THE Australian contingent at the PEFC international sustainability summit in Dublin last week has returned after embracing the theme Climate Change Mitigation: Winning with Wood.

The event was hosted by PEFC Ireland and included a range of speakers on the whole value chain from forest to consumer, exploring how forests and wood-based products play a crucial role in the fight to combat climate change.

A highlight was the Stakeholder Dialogue Day at Dun Laoghaire, Dublin, on May 12.

“We are thrilled that PEFC’s first post pandemic, international stakeholder meeting since 2019 took place in Ireland,” said William Merivale who heads up PEFC Ireland.



Taking a break at Birr Castle, Birr in the County of Offaly, ahead of a field tour, are Responsible Wood delegates Matt de Jong, sustainability manager, Simon Dorries, CEO, and Katie Fowden, director, with Suzette Weeding, PEFC International board member.

“Sustainably-managed forests are so important and it’s rare that so many people that play a day-to-day part in making the world a cleaner and healthier place can come together in one place.”


Speakers including Senator Pippa Hackett, Minister of State for Forestry, Department of Agriculture, Food and Marine, who outlined Ireland’s

COP26 goals and forestry’s role in achieving them and Dr Pablo van der Lugt, lecturer in bio-based building at Delft University of Technology and author of Tomorrow’s Timber, who emphasised why timber and circular thinking provided a ‘futureproof’ building material choice. Moderator was Dr Dorothy Maxwell, director of sustainability

at Davy Horizons, one of HRH The Prince of Wales’s responsible business ambassadors and ex-director of sustainability at House of Fraser.

“With an increasingly environmentally-aware consumer base, influential market sectors such as construction, food to go, retailers and FMCG (fast moving consumer goods), manufacturers are rapidly adopting circular habits and switching to renewable, recyclable and responsibly sourced materials such as timber and wood based products,” William Merivale said.

Delegates exchanged ideas on the benefits of using low-carbon forest products and the assurances of responsible sourcing that PEFC certification offers.



BUILD BETTER WITH ATS

At ATS Building Products, we understand that everything has to line up. Great projects – no matter the size – require a mix of quality, timeliness, & competitive pricing.

You can count on our team to make sure your projects run efficiently and deliver value from start to finish. We are driven to help you do your best work.

Right products. Right time. Right price.

Visit us in person or online at www.ATSBP.com to learn more about how we can help you build better.

NSW	NSW	NSW	QLD	VIC	SA
157 Briens Road Northmead, 2152 t. 1800 577 551	17-23 Longfeld Street Lansvale, 2166 t. 1800 577 551	4B/400 Moorebank Ave Moorebank, 2170 t. 1800 577 551	Unit 3 / 153 Rossmanns Rd Stapylton, 4207 t. (07) 3667 8217	372 Lower Dandenong Rd Braeside, 3195 t. (03) 9034 3994	48 Lipson Street Port Adelaide, 5015 t. (03) 9034 3994

A treatment project that came about by accident ... this is where changing your mind comes in to play

It was certainly pleasing to see the proportion of protected wood in some penetration trials

BUT if you said ...

One of the nice things about being a scientist is that you can change your mind if the data points you in a different direction. I think it is a good thing to change your mind – but only if supported by facts.

Over the past couple of months I have been helping out with a project that came about by accident and is turning into a really cool (now that dates me) exercise.

Jeff Morrell from the Durability Centre was talking to some researchers in South Australia who were/ are working on a project to characterise the mechanical properties of the pine resource from across the country. The wood they were working on had a heap of accompanying data to help characterise the resource. Jeff spied a pile of leftover wood and started a satellite project to investigate the treatability of the same material.

To cut a long story short, we prepared three pallet loads of 800 mm lengths of wood for preservative treatment, and

“WORKING TO CHARACTERISE MECHANICAL PROPERTIES OF PINE RESOURCE

there is the same amount waiting to be shipped to Queensland. Half the prepared samples were preserved with CCA and matching bits are yet to be preserved with LOSP preservative. After treatment and drying, we cut biscuits out of the middle and tested one face for copper penetration and the matching face for the presence of sapwood and heartwood.

This is where changing your mind comes in to play.

I have always assumed that the heartwood of pine cannot be effectively penetrated by wood preservative, and that the standard's requirement of 5 mm or 8 mm preservative penetration was asking for too much. I believed you couldn't guarantee the required depth(s) of penetration.

When the current form of the preservation standard was first developed back in the late 1980s, Standards Australia required a consensus-based outcome from the drafting committee. I think (could be wrong) that this requirement



As a scientist it's good thing to change your mind – but only if supported by facts.

that a requirement that I was keen on would be accepted by all in the committee.

Based on the copper penetration and sapwood/ heartwood tests, the CCA preserved material from the resource treatment samples turned up a surprising amount of penetrated heartwood.

The results still have to be measured, crunched and linked back to the

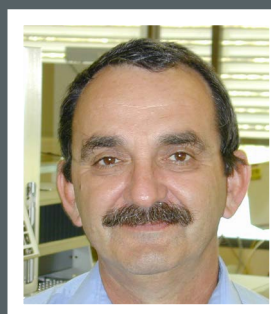
source of the material but it is certainly pleasing to see the proportion of protected wood in some of the material. It is also worth pointing out that the CCA preservation schedule used to treat the test material was not very harsh.

As I said, it is a really cool project and I expect the results to be really interesting.

On a totally unrelated matter, have you ever wondered how we have got to the situation where computers are asking humans to prove they are not robots?

As for heartwood penetration, it is one of life's little mysteries.

JACK'S RANT



With JACK NORTON
Secretary, TPAA

holds today. This leads to a 'lowest common denominator' result from a lot of horse-trading.

At the time of developing the 5mm-8 mm requirement, I was sceptical but agreed so

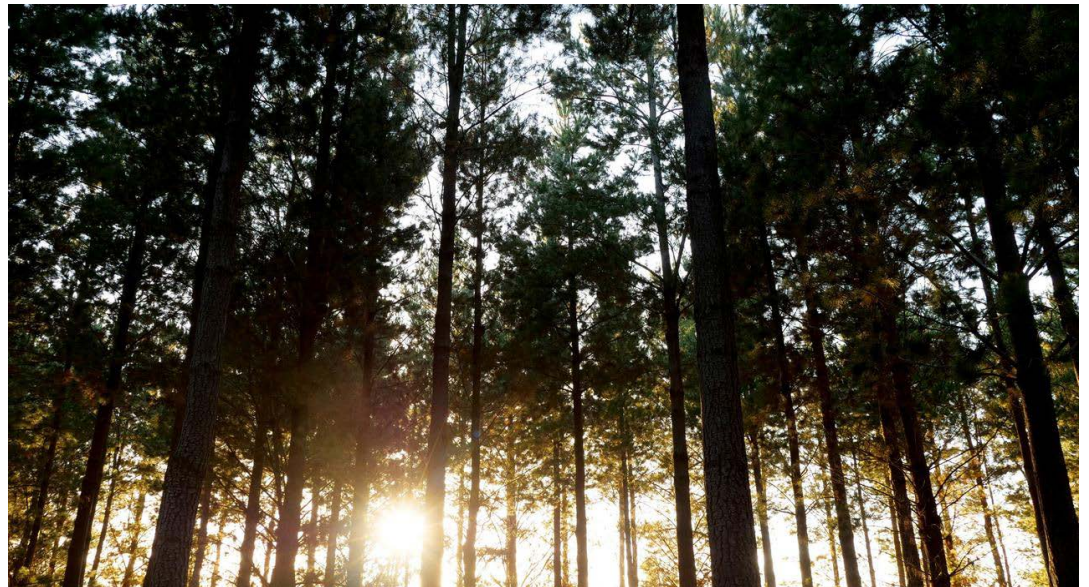
From P 5

acknowledges the strong support and competitive policy offerings from Labor, led by Shadow Minister for Agriculture Julie Collins, which positions our sector well to deliver on our Plan for Growth in partnership with the next government, regardless of the election outcome," Greg McCormack said.

"The bipartisan support for the funding commitments is of course welcome. However, above all else, our forest industries need policy and resource certainty that will translate to cost certainty for consumers.

"Just as important are

“PROMISE TO WORK WITH STATES ON PERMANENT TIMBER PRODUCTION AREAS



Both the Coalition and Labor have committed more than \$300 million in new investment for forest industries.

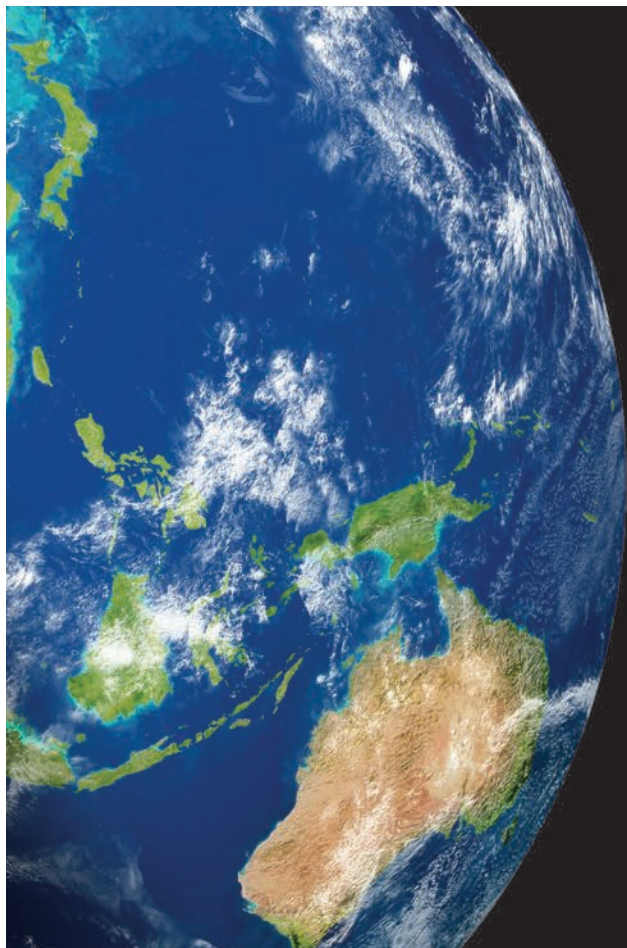
the commitments from both sides to progress the goal of growing our timber plantation estate by one billion trees by 2030 to meet Australia's future timber and wood fibre needs, and to secure our native hardwood timber industries by supporting regional forest

agreements and opposing any further forest 'lock-ups'.

"Pleasingly, both the Coalition and Labor have also committed to fast-tracking the removal of regulatory 'water rule' barriers in the Emissions Reduction Fund in five key forestry regions currently excluded from

accessing carbon credits."

Mr McCormack said the Coalition had promised to work with state governments to establish 'permanent timber production areas' to provide greater resource certainty and to counter devastating decisions by state Labor.



Some standards enforced in Australia originate from international certifying bodies

Think Global (not just Local)

Always purchase appropriately certified imported timber products



Australian Timber Importers Federation Inc
www.atif.asn.au



TABMA delivers more than \$1m in trainee funds

THE federal government's successful Boosting Apprenticeship Commencements subsidy has seen TABMA employ more than 240 apprentices and trainees and place them with 91 businesses, returning over \$1 million in subsidies to host employers.

The world-wide Covid-19 pandemic has impacted everyone in vastly different ways. Not the least of these has been businesses, affecting the majority of industry's bottom line and as a result, decisions to employ and train.

Along came the wage subsidy in the government's Boosting Apprenticeship Commencements (better known as BAC) wage subsidy.

Launched in October 2020, the BAC subsidy provides up



1/ The Boosting Apprenticeship Commencements subsidy has seen TABMA employ more than 240 apprentices and trainees and place them with 91 businesses.

2/ David Little... training industry professionals of tomorrow – a job well done..

to 50% for the gross wage of a new apprentice or trainee during their first year of employment. For a group training organisation (GTO) like TABMA Apprentices and Trainees, this subsidy is received and passed back to

host employers.

"The BAC has been a real success story across the country in boosting apprentice and trainee numbers in most industries, the timber and hardware sectors included," TABMA CEO David Little said.

"TABMA trainees and apprentices have been taken on by fantastic industry companies like Simmonds Lumber, Dahlsens, Tilling Timber, K & B Timber & Hardware, Big River, ITI Australia, Hudsons Home Timber & Hardware and many others – all great supporters of training industry people for the future," Mr Little said.

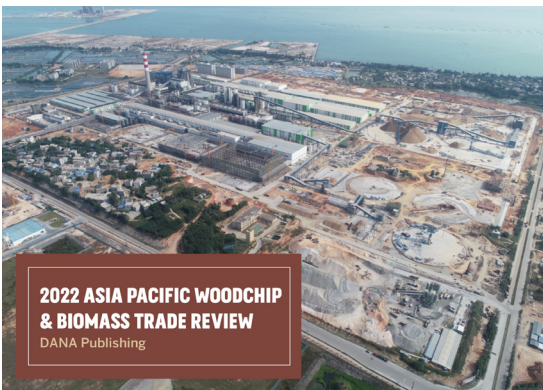
As a GTO, TABMA employs apprentices and trainees and places them with host employers.

"We manage the placement, oversee the training delivery and ensure that everything is in place to make the arrangement a success for both the host employer and apprentice/trainee," Mr Little said.

Cont P 15

2022 ASIA PACIFIC WOODCHIP TRADE REVIEW

DANA Publishing



2022 ASIA PACIFIC WOODCHIP & BIOMASS TRADE REVIEW
DANA Publishing



Available now for immediate delivery - 212 page, 14 Chapter Review.
Chapters include:

- Introduction
- Markets – Japan
- Markets – Mainland China
- Markets – Other Asia
- Markets – Asia / Europe Biomass
- Supply – North America
- Supply – Latin America
- Supply – Oceania
- Supply – South East Asia
- Supply – Africa
- Woodchip Supply to Europe
- Seaborne Woodchip Transportation
- Conclusions & Predictions 2020-2026
- Contacts Registry



International Forest Industry Advisors

GINGKO



FOR BROCHURE AND TO ORDER [CLICK HERE](#) OR EMAIL admin@dana.co.nz

Bountiful Grafton forests look for new processors

THREE years on from the 2019-20 fires, the Grafton timber industry is looking to the future, with a 10-year supply of timber and wood products on offer for processors looking to set up in the region.

Forestry Corporation of NSW Grafton district manager Trent Froud said while local softwood plantations were badly impacted by the fires, replanting was ahead of schedule, with a third of the region's fire-affected plantations already replanted and rapidly regrowing and the remainder to be replanted within the next four years.

"Since the fires, we've been harvesting at up to four times



Grafton nursery manager Kathryn French with some of the seedlings

the normal rate to salvage timber from the dying trees, we've doubled the growing capacity at our Grafton nursery and we've put record numbers of seedlings in the ground," Mr Froud said.

"Coupled with phenomenal growing conditions, our plantations are in great health, growing the house frames of

the future.

"Unfortunately, the mill at Rappville that previously processed local timber was lost in the fires, so we're now looking for partners to turn these trees into the timber and wood products our communities need.

"From 2025, we'll be ready to harvest 120,000 tonnes

of timber a year from this region's plantations and we're reaching out to the industry for new proposals to process all grades of timber grown in the local area.

"Plantations are a long-term industry and we're looking for new partners to work with us here in Grafton for at least the next 10 years. We're working hard to regrow and reinvigorate the timber processing industry here in Grafton, and this is an exciting milestone in our recovery."

Mr Froud added: "Of course, timber is the ultimate renewable resource, and we replant every tree we harvest, so our region's softwood plantations will continue producing the same amount of sustainable timber and wood products for the next 100 years and beyond."

arxada

**We are stronger
when we stick together**

TRUST

Azotek®

**PROVEN
WOOD
PROTECTION**

Azotek is a registered trademark of Arxada or its subsidiaries. ©2022 Arxada

Ironbark part of Australian lexicon and one of the most easily recognised among our eucalypt forests

Woven in folklore, this distinctive tree is a source of some of our highest quality hardwoods

IRONBARK trees are woven into Australia's folklore. They feature in poetry and essays from colonial times to the present.

A common name of a number of species in three Eucalyptus groups, ironbark trees have dark, deeply furrowed bark. They are probably the most distinctive and easily recognised tree of the Australian eucalypt forest and are the source of some of our highest quality hardwoods.

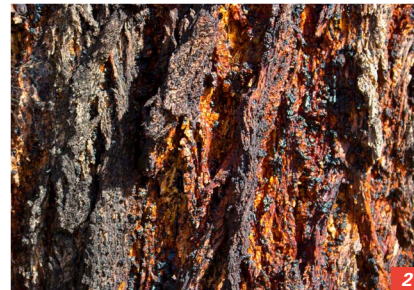
Instead of shedding annually as in many of the other species of eucalyptus, the dead bark accumulates on ironbark trees forming the fissures. It becomes rough after drying out and becomes impregnated with kino, a dark red sap exuded by the tree.

The tree is so named for the apparent resemblance of its bark to iron slag. The bark is resistant to fire and heat and protects the living tissue within the trunk and branches from fire. In cases of extreme fire, where leaves and shoots are removed, the protective bark aids in protecting

“IRONBARKS ARE AMONG THE MOST VALUABLE OF OUR HARDWOODS”



1/ Grey ironbark ... ironbarks are probably the most distinctive and easily recognised tree of the Australian eucalypt forest and are the source of some of our highest quality hardwoods.



2/ Ironbark trees have dark, deeply furrowed bark that is resistant to fire and heat and protects the living tissue within the trunk and branches from fire.

epicormic buds which allow the tree to reshoot.

Ironbark bark is typically very rugged, dark grey, hard and deeply furrowed. There are some variations, however. Broadleaved red ironbark, for example, has a flaky and relatively soft bark, particularly in young trees, while in other species the bark can be rather corky and the fissures shallow and widely

separated. So corky is the bark of grey ironbark that was once considered as a possible substitute for cork.

The ironbarks are trees of eastern and northern Australia and don't occur in Tasmania or the south-western part of the continent.

There is considerable variation in the environments in which the different species grow, from excessively drained

sandy or stony soils in a rainfall of 400 mm for red ironbark to deep loams bordering the rainforest in the 1500 mm rainfall region, where grey ironbark sometimes occurs.

Ironbarks are able to tolerate seasonal droughts on unfavourable sites, such as stony ridges, but under these conditions they deteriorate in size and form.

The timbers of the ironbarks are among the most valuable and widely regarded of the Australian hardwoods – dark brown with paler sapwood, or dark

red with yellow sapwood and a very hard, dense, strong and very durable, with a fine uniform texture and interlocking grain. Ironbark timber continues to attract a price premium over other Australian hardwoods

Ironbark species include narrow-leaved red ironbark, broad-leaved red ironbark, silver-leaved ironbark and Queensland grey ironbark.

TALKING TREES



With **JOHN HALKETT**

Sponsored by
Forestry Corporation of NSW



The largest manager of commercial plantations and native forests in NSW
Visit us at forestrycorporation.com.au

From P 2

China's use of softwood logs reduced from up to almost 100,000 cub m a day at the peak last year to less than 50,000 cub m, although it rebounded to 73,000 cub m last week.

In addition, European softwood log supply to China trade in the first three months of 2022 plummeted to only 44% of what it was in 2021. This has ironically left demand for New Zealand logs reasonably viable, even with low demand.

For example as at week end May 15, the European spruce log inventory in China was 970,000 cub m, which was 70,000 cub m less than week end May 8, and a huge 300,000 cub m less than it was at the end of April.

However, Neilson predicts that Russia will not re-litence log exports, which it banned from January 1 this year.



New Zealand is one of the largest exporters of softwood logs to China

Other factors such as the weakening of the Chinese currency renminbi to USD exchange rate is also having a big impact.

Shipping costs go up and down and up again like a yo-yo (currently rebounding again) and Neilson further cautions that the Ukraine impact could change in a heartbeat one way or the other, depending on which

way Vladimir Putin decides to jump.

His huge "own goals" of ensuring that Finland and Sweden will likely join NATO, and his so terribly miscalculating how almost

“DAILY EVENTS MAKE FOR PUTIN'S WORST NIGHTMARE

totally useless his Russian military is in fighting a motivated foe will be taxing his mind at every waking hour.

In fact, daily events unfolding in Ukraine now make for Mr. Putin's worst nightmare.

He could even push the nuclear button, setting off a global trade black

winter, but (hopefully) he will realise that he is now in such a deep hole that he should stop digging

The next month will be crucial to even begin to predict the impact of the Ukraine conflict on wood trade in the second half of 2022.

(With extracts from the Southland Times)

From P 12

"We are the only GTO dedicated to the forestry, timber and building materials industries."

Here are the numbers. Since the introduction of the BAC subsidy, TABMA has employed 241 apprentices and trainees, placed with

91 host employers across Australia. These new entrants have been doing qualifications such as timber manufactured

“BAC A REAL SUCCESS STORY ACROSS THE COUNTRY

products, frame and truss manufacture, frame and truss design, saw doctoring and more.

"As a result of these new apprentices and trainees, TABMA has passed back more than \$1 million in subsidies to host employers, a huge accounting task in terms of claiming and accounting,

but the TABMA team has worked tirelessly to complete these transactions as quickly as possible," Mr Little said. "A job well done."

The BAC subsidy will finish on June 30 so it's not too late to bring new people into a business and train them to become the industry professionals of tomorrow.

TimberPro



KOMATSU
Creating value together



Komatsu Forest Pty Ltd.
11/4 Avenue of Americas
Newington NSW 2127 Australia
T: +61 2 9647 3600
E: info.au@komatsuforest.com

Young forester's research boosted with Gottstein Trust grant support: time to put thinking caps on!

GET your thinking caps on. Applications for the Gottstein Trust flagship grants program are closing on Friday, June 3.

This is a great opportunity for any individual seeking a way to boost their career by gaining grants to build their skills and knowledge.

There are three categories available:

- Skill development support grant – for individuals at any level in the industry. The amount of funding sought is up to the individual, based on the cost of the skill development activity they have in mind.

- Scholarship grant – to help students at any TAFE or tertiary level to pursue their studies and/or research.

- Gottstein fellowship grant. A fellowship applicant must submit a project idea of their own creation which usually requires an international or substantial domestic study tour; and which can be shown to have potential benefit for the industry.

These opportunities are open to absolutely anyone – an in-field machinery operator,



Travis Britton...
The support from Gottstein has contributed to work in understanding the impacts of future drought in native and production forest systems.

a nursery worker, a mill worker, a TAFE student, a PhD researcher, an architect, engineer, silviculturist, forest ecologist, timber merchant or from marketing – to give just a few examples.

To encourage others to apply, a fine young Tasmanian Travis Britton was asked to share his experience of support from the Gottstein Trust Fund. The name Britton is synonymous with Tasmania's magnificent hardwood milling sector, and clearly Travis is a talented family member who's making a mark.

Travis was awarded a three-year Gottstein Trust forestry scholarship in late 2018. It was the first year of his PhD at the University of Tasmania.

"Travis is someone with a great capacity to contribute to the industry and we wholeheartedly congratulate him on his achievements,"

“SCHOLARSHIP ALLOWED ME TO CONCENTRATE ON MY PROJECT WHILE SUPPORTING ME FINANCIALLY

Gottstein chair Suzette Weeding said.

In his own words:

"The support of the Gottstein scholarship was a great help to me during my PhD. It allowed me to focus solely on conducting my research without the distraction of additional work to support myself financially.

"This also allowed me to focus on the next stages of my scientific career, specifically my application for a Fulbright Postdoctoral Fellowship. This was successful and it will allow me to establish a collaboration with researchers at the forefront of understanding drought-induced tree mortality. I hope to bring that knowledge back to Australia, and hopefully see it being implemented into management practices.

"In addition to the financial support, the Gottstein Trust was always interested and excited by my annual progress reports. This made me feel as though I

Cont P 17

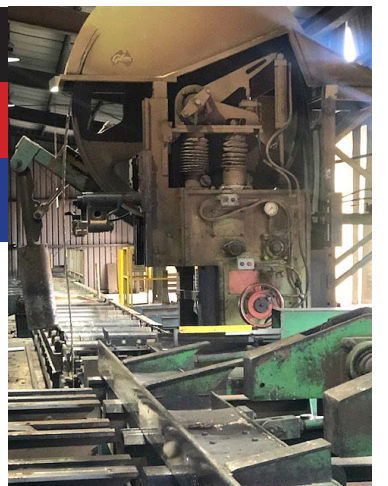


BROADFORD SAWMILLS EQUIPMENT

FOR SALE

Sawmill equipment suitable to cut both softwood and hardwood. Equipment in very good condition and well maintained.

- 6' Gibson Headrig bandsaw with Grey carriage and operator's cabin.
- Kockums board edger with 4 saws (1 fixed and 3 moving) with operator's cabin.
- All conveyors, transfer decks, chain decks, blowers, ducting, electricals, etc.
- Spare parts and saws.



Price- \$165,000 + GST. ONO for the lot. Will separate. Contact – Maurice Efron 0411 887 701

From P 16

was actively contributing to the advancement of the Australian forestry industry and its long-term productivity.

“This momentum has contributed to me continuing my work in understanding the impacts of future drought in native and production forest systems.

“I was lucky enough to have received the Gottstein support alongside some fellow PhD students and friends at the University of Tasmania. All had exciting projects that were vastly different to my own. Being part of a group all contributing to the long-term prosperity of forests was hugely motivating

“TRAVIS IS ONE OF ALMOST 200 FORMER GOTTSTEIN TRUST RECIPIENTS

and showed that our work had applied benefits.”

Travis, now a post-doctoral Fullbright Scholar at the University of California, Santa Barbara, has centred his research on how ecological interactions and plant physiology influences tree growth and survival.

Fullbright Australia describes his focus as being how ecological interactions among neighbouring plants modify the direct effects of environmental change in forest communities. Travis is particularly interested in whether integrating broad-scale climatic conditions with local-scale ecological interactions increases our ability to accurately predict tree performance.

The outcomes of his Fulbright research will inform models predicting future drought impacts on forest ecosystems and assist in maximising the success of



Suzette Weeding... Travis has done well and will continue to contribute to Australia's renewable forests and wood products economy.

future conservation efforts.

“Travis is one of almost 200 former Gottstein Trust award recipients,” Suzette Weeding said.

“Each has, does and will continue to contribute to Australia's renewable forests and wood products economy in all sorts of ways and we look forward to selecting the 2022 recipients.”

Further details and online

application forms are available at gottsteintrust.org/grants-courses. Those interested are invited to discuss their project ideas with Helen Murray on 0419 991 424 before applying or email team@gottsteintrust.org

Fulbright Australia is a non-profit organisation sponsored by the US and Australian governments and other institutional and business partners, private bequests and endowments.

The Fulbright program has a rich history and proud legacy supporting educational excellence and cultural exchange. The commission relies on many individuals to meet its goals, to forge new ground in the area of partnerships and scholarships, and to provide a rigorous, equitable and professional environment for all scholarship applicants and recipients.

 **2022 DANA - GINGKO**
GLOBAL WOODCHIP AND BIOMASS TRADE CONFERENCE



SINGAPORE CONFERENCE - 26 - 28 OCTOBER 2022

Extended 2 1/2 Day Conference with seven major themes:

- Global Wood Chip Trade: Regional user and supplier updates
- Details of the >150 dedicated woodchip vessel shipping fleet
- Global Biomass Trade: Regional user and supplier updates
- Global pulp-mill status and expansions: Market pulp trends
- The future impact of Russia: Woodchip and Biomass Trade - and more...
- The Global status of the tree based carbon credit industry
- A 'New Projects, New Products' panel

FOR WEBSITE [CLICK HERE](#) OR TO CONTACT ORGANISER [CLICK HERE](#)

Covid and Ukraine conflict bring major shifts by countries supplying tropical sawn wood to the UK

ITTO observes timber shortages and sharply increasing prices in many supply regions

THERE have been big changes in countries supplying tropical sawn wood to the UK, particularly in the opening months of this year.

Imports were 15,800 tonnes in the first two months of 2022, 72% more than the same period last year, and 32% more than the same period in 2020.

The International Tropical Timber Organisation says this is indicative of the major shifts in hardwood markets since the start of the pandemic [and the ongoing Russia-Ukraine conflict] which have led to significant supply shortages and sharply increasing prices in many supply regions along with continuing high levels of demand.

Interestingly, there has been little vocal response on tropical wood imports (some from suspected illegal sources) from non-profit organisations across Britain.

UK imports of tropical sawn wood from Cameroon in west-central Africa were 4300 tonnes in the first two months of this year, 13% more than the relatively high level in the same period last year and 86% more than the same period in 2020.

UK imports from Malaysia, which had fallen to little more than a trickle in recent years,



Indirect UK imports of tropical sawn wood from other EU countries have fallen dramatically since the UK's departure from the EU single market on January 1 last year.

were 4300 tonnes in the first two months this year, a five-fold increase compared to the same period last year and nearly a three-fold gain compared to the pre-pandemic level in the opening two months of 2020.

In contrast, UK imports of tropical sawn wood from the Republic of Congo were only 1100 tonnes in the first two months of this year which, while 43% more than the same period last year, were 68% less than the same period in 2020.

Before the pandemic, the UK had been sourcing more sawn hardwood from the Congo but this trend has faltered in the last two years. However, there has been a big rise in UK imports from Cameroon, which were 1900 tonnes in the first two months this year, a gain of 52% compared to the same period last year.

UK imports from the region were negligible before the pandemic.

UK imports of tropical

sawn wood from Côte d'Ivoire on the Ivory Coast were 800 tonnes in the first two months this year, a big increase compared to negligible imports in the same period last year and a 25% increase compared to the same period before the pandemic in 2020.

Imports of tropical sawn hardwood from Brazil also made gains from a small base, at 1100 tonnes in the first two months of this year, 13% more than the same period last and 55% more than the same period in 2020.

**“IMPORTS OF
TIMBER FROM
EU COUNTRIES
HAVE FALLEN
DRAMATICALLY**

Indirect UK imports of tropical sawn wood from other EU countries have fallen dramatically since the UK's departure from the EU single market on January 1 last year.

Total UK imports from EU

countries were 2600 tonnes in the first two months of this year, 30% less than the same period last year and 39% down on the same period in 2020.

UK imports of tropical hardwood mouldings and decking were relatively high in the opening two months of 2022 at 2000 tonnes, 88% more than

the same period the previous year and 90% more than the pre-pandemic level in the first two months of 2020. This is another commodity group for which there has been particularly strong demand in the UK, combined with sharply tightening supply since the start of the pandemic.

And like in the plywood sector, the war in Ukraine and sanctions on Russia are expected to lead to even tighter supplies of non-tropical decking products that directly compete with tropical decking in the short to medium term.

UK imports of decking and mouldings increased sharply from Indonesia and Brazil in the first two months of this year. Imports of 751 tonnes from Indonesia were 230% more than the same period last year and 108% more than the same period in 2020. Imports of 490 tonnes from Brazil were 149% up on the same period in 2021 and 71% more than the same period in 2020.

Hyundai Kona N and i30 sedan a design hero's choice

AUTOCAR, the world's oldest car magazine, has just named modern motor visionary SangYup Lee its Design Hero of the Year.

Hyundai's executive vice-president, Lee previously worked at the VW-Audi studio in California and then British luxury car maker Bentley in London, so you can "feel and see" his design influence across the South Korean manufacturer's range in Australia, by far the biggest importer of Hyundais in the world after the US.

We've tested most of them, including the i20 N, Autocar's most affordable driver's car and the Santa Fe, judged best large car. This time around we took two in a row... the 130 N hatch and the very stylish Kona N, the sub-compact crossover SUV – both tops on Mr Lee's hero list. And I await, somewhat hesitantly, the new all-electric Ioniq 5, available in a small batch of 68 cars and released just this week.

The Kona N shares its turbo-charged 2-litre four-cylinder petrol engine (206kW/392Nm) and eight-speed twin-clutch automatic gearbox with the i30 N hot hatch. The Kona is squarely targeted at the tarmac and is front-drive only. The low-profile tyres and lowered suspension tell us it



Hyundai Kona N... comfort and convenience.

really isn't so much an SUV but another Hyundai high-riding hot hatch.

There are two models – the Hyundai Kona N priced from \$47,500 (plus on-roads) and Kona N Premium from \$50,500.

The base-model Kona N has sports seats, a sports steering wheel, a stubby N-labelled automatic gear lever, and alloy pedal covers. Both the base

and premium models have two 10.25-in. widescreen display screens, one for infotainment and the other for instruments with custom settings.

The rest of the interior is typical of regular versions, with a tall roof, good back-seat space but with a smaller 361-litre boot than the i30 hatch.

Comfort and convenience



The i30 sedan...exclusive exterior package.

items include one-touch power windows for front-seat occupants, tinted rear glass and side mirrors with a power-folding function so you know the car is locked just by looking at it.

Fuel efficiency for the Kona is around 6.2l/100km and 6.9l/100km for the Kona-N. The electric version has a range of around 415km consuming around 20l/100km.

The 2022 Hyundai i30 Sedan N comes hot on the heels of the i30 N – both manual and automatic. The exclusive exterior package includes a body kit with a redesigned front section, redesigned rear bumper, and a raised rear wing above the boot. LED lighting is positioned front and rear.

The points on comfort and track ability remain valid for both auto and manual, with both affording a comfortable and practical driving position.

The seats are leather-trimmed, and there's also an N leather steering wheel and shift knob, N metal pedals and footrest. There's plenty of console storage as well, with useful door pockets, cup and bottle holders, and the wireless charging pad doubles as clever smartphone storage into the bargain.

Retail price is listed at \$49,000 (MSRP).

Timber & Forestry e-news is the most authoritative and quickest deliverer of news and special features to the forest and forest products industries in Australia, New Zealand and internationally. Enews is delivered weekly, every Thursday, 48 weeks of the year. Advertising rates are competitive with any industry magazine. Timber&Forestry e-news hits your target market – every week, every Thursday!

HEAD OFFICE

Timber & Forestry e-news
PO Box 69, Potts Point, NSW 1335,
Australia
Phone | +61 (0) 417 421 187

PUBLISHERS

John Halkett | +61 (0) 417 421 187
johnh@timberandforestryenews.com
Dennis Neilson | +64 (0) 7 349 2764
dennison@timberandforestryenews.com

MANAGING EDITOR

Jim Bowden | +61 (0) 401 312 087
cancon@bigpond.net.au
PO Box 330, Hamilton Central QLD
4007, Australia

ADVERTISING

John Halkett | +61 (0) 417 421 187
johnh@timberandforestryenews.com
advertising@timberandforestryenews.com

The information contained in this publication has been obtained from sources assumed to be reliable. However, the publishers disclaim all warranties as to the accuracy, completeness, reliability or adequacy of the information displayed. Opinions expressed in Timber & Forestry e-news are not necessarily the opinions of the publisher or staff. We do not accept responsibility for any damage resulting from inaccuracies in editorial or advertising. The publishers are therefore indemnified against all actions, suits, claims or damages resulting from content in this e-news.

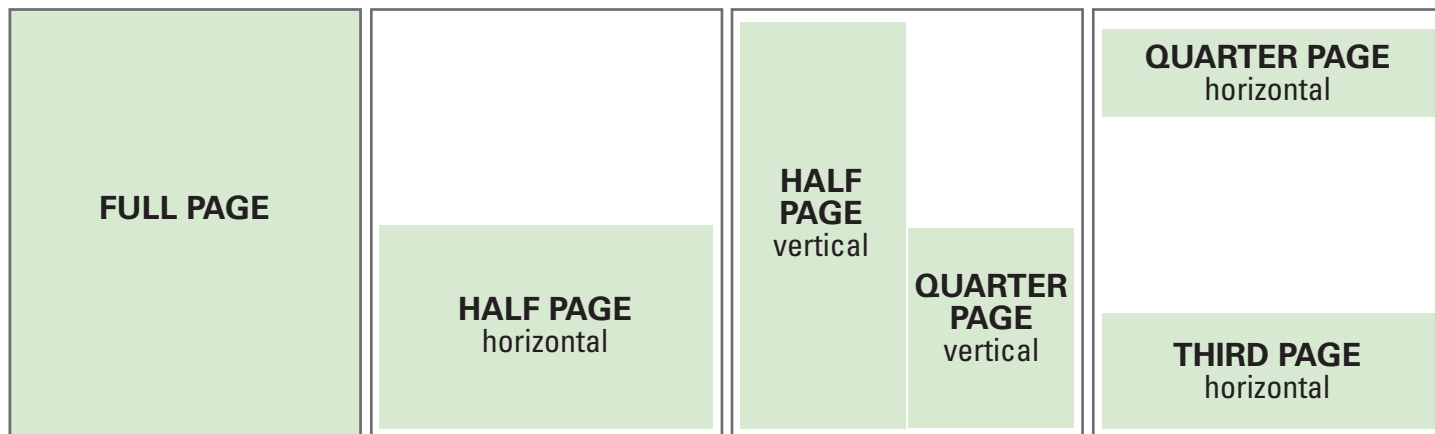
DELIVERED
WEEKLY TO
15,200
GLOBAL
READERS*

ADVERTISING RATES

timber
& FORESTRY *eNEWS*

Now in its 14th year, Timber & Forestry eNews has grown to be the Number ONE online weekly news journal for the forest and forest products industries – across Australia, New Zealand and internationally.

AD FORMATS



DISPLAY AD RATES

FULL PAGE: \$485

297mmH x 210mmW

HALF PAGE: \$290

Vertical • 254mmH x 93mmW

Horizontal • 125mmH x 190mmW

QUARTER PAGE: \$185

Vertical • 125mmH x 93mmW

Horizontal • 63mmH x 190mmW

THIRD PAGE: \$215

Horizontal • 73mmH x 190mmW

PAGE 1 Front cover strip: Contract booking

Horizontal • 30mmH x 190mmW

PAGE 1 Front cover module: Contract booking

Horizontal • 45mmH x 49.5mmW

PAGE 2 below story: Contract booking

Horizontal • 73mmH x 190mmW

Timber & Forestry eNews is published by Timber & Forestry eNews
PO Box 69, Potts Point, NSW 1335, Australia. Phone: 0417 421 187.

Delivered every Thursday, 48 weeks of the year to industry decision
makers in Australia, New Zealand, the Asia-Pacific, North America, UK
and Europe. Ad rates shown are based on a weekly booking and are
subject to GST being added. Overseas bookings are exempt from GST.

DEADLINES

Display ads: Book by 9am Tuesday prior to publication

Supplied artwork: Wednesday 12 noon prior to publication. Supply hi-
res jpg or pdf to our specifications. **NO crop marks or bleed required.**

WHO TO CONTACT

Media releases: Jim Bowden e: cancon@bigpond.net.au | **Display ad bookings:** e: advertising@timberandforestryenews.com

Accounts: e: johnh@timberandforestryenews.com | **Subscribe:** www.timberandforestryenews.com

CLASSIFIED ADVERTISING

JOB ADS: ONLINE BOOKINGS ONLY

BUY & SELL ADS: ONLINE BOOKINGS ONLY

744pxH x 720pxW

BANNER ADVERTISING

• **FEATURE PACKAGE: INCLUDES**

**PAGE 3 strip below story / top email strip /
top website banner strip**

Horizontal strip • 30mmH x 190mmW

Email strip • 395pxH x 1500pxW

Top website banner strip • 120pxH x 1000pxW

• **STANDARD PACKAGE: INCLUDES**

**PAGE 8 module / email module /
website module on advertising page**

Module • 63mmH x 61mmW

Email module • 336pxH x 336pxW

Website module • 260pxH x 260pxW

TERM DISCOUNTS

12 WEEKS: 7.5%

24 WEEKS: 10%

48 WEEKS: 15%

Classified advertising: JOB ADS ARE COMPLETELY ONLINE.

Go to www.timberandforestryenews.com/post-a-job/ to place a job
vacancy. Book by 12noon Wednesday prior to publication. Job ads are for
individual positions. If more than one position is to be advertised, sepa-
rate ads will need to be created and advertised accordingly.

BUY & SELL ADS ARE ONLINE AND IN THE PUBLICATION. Go to
www.timberandforestryenews.com/product/buy-sell-advertisement/
to place an ad. Book by 5.00pm Tuesday prior to publication.

TERMS

New clients invoiced on booking. Existing clients 14 days.