

DELIVERED
WEEKLY TO
15,200
GLOBAL
READERS*

Like and
follow us on



ISSUE 745 // March 9, 2023

timber & FORESTRY *e*news



Hardwood industry: large impact on the NSW economy

COVER STORY P 3



**Wood
Solutions**
design and build

www.woodsolutions.com.au



**MARGULES
GROOME**

FIRST FOR FORESTRY CONSULTING

www.margulesgroome.com



ForestFit

BUSINESS, SAFETY AND
ENVIRONMENTAL SYSTEMS
CERTIFICATION

www.forestfit.com.au



Responsible
Wood RW/1-10-1

2022/23
Community
Grants Program
recipients announced!

Click here.

Talk to our friendly team about:

- Training and upskilling your team
- Apprentice and trainee recruitment and placement
- Workplace health and safety
- Member savings



1800 822 621



Perth faces a looming firewood shortage again this winter

THE Sustainable Forest Industries Roundtable says the McGowan government's inability to provide any direction to businesses affected by the unscientific native forest "logging ban" is having disastrous consequences for the tens of thousands of Perth residents and the hundreds of businesses that rely on firewood for home heating and cooking.

Diana Babis, owner of Kingsway Firewood in Perth, has already stopped supplying bulk wood to her customers, with shortages this coming winter set to be worse than last year. "My customers, including many elderly people, are becoming distraught. They don't know where they will source their wood this winter, let alone pay the crazy prices that are being charged in some areas. I've heard over \$600 per tonne for bulk wood as an asking price, nearly double what it was three years ago." she said this week.

"We've had meeting after meeting with Ministers (Forestry Ministers Dave Kelly and Jackie Jarvis). They keep saying there will be enough



Tens of thousands in Perth expected to be without firewood due to logging restrictions

firewood, but they can't say where it will come from, how much it will cost and how much volume will be available. They just don't know and struggle to explain the reasoning behind the logging ban."

"Demand for firewood has been steadily increasing for some years", said timber industry consultant John Clarke, "with COVID 19 causing a big surge in purchase of wood heaters of all types, for heating, cooking and ambiance, with a resulting big increase in demand for firewood."

Jarrahwod Australia sold about a quarter of a million bags of wood in 2021,

but the McGowan logging ban announcement meant harvesting and haulage contractors immediately started to look for work elsewhere and apply for the compensation payments on offer.

Veteran firewood supplier Barry Fry has turned his back on relying on firewood resources from State forests and has turned to private property sources.

"I can only supply a small quantity from private land south of Perth and I'm being run off my feet," said Barry.

"I try to cater for commercial

businesses that need good quality firewood for grilling at restaurants and also for pizzerias. The demand is huge.

"The government has no idea about the firewood sector. They are killing off one of the most fundamental rights of society, the right to use good quality dry firewood for cooking. I'm disgusted."

Tara Giovanetti, with husband Mike, are major firewood suppliers based at Picton near Bunbury. They purchase around 10,000 tonnes of jarrah firewood logs from the FPC each year under contract. The logs are processed and the wood allowed to dry over summer before being ready for sale. "We sell our product locally," said Tara. "Last year we ran out of stock in the middle of winter and this year will be much the same."

Sustainable Forest Industries Roundtable convenor, David Utting, has called on the Premier to meet with industry members, explain the reasoning behind the logging ban and clearly state where people and businesses will source their firewood for this winter and beyond.



THE CHOICE IS YOURS.

Following the awarding of a Global GreenRate Level A certification, MicroPro Wood Treatment Technology has recently been awarded a GoldHEALTH rating with its recently published Global GreenTag Level A Product Health Declaration™ (PHD™).

The GreenTag PHD is the first health transparency tool in the world to assess human health concerns directly, rating the health impacts of a final product – and not just the hazards of a product's ingredients.

For more information call us now
on 1800 088 809.

KOPPERS
Performance
Chemicals

MicroPro® is a registered trademark of Koppers Inc. or its subsidiaries. MicroPro® timber products are produced by independently owned and operated wood preserving facilities. © 2019 Koppers Performance Chemicals Australia Pty Ltd. Global GreenRate, GoldHEALTH, Global GreenTag and GreenTag PHD are registered trademarks operated under licence by Global GreenTag Pty Ltd.

NE NSW remains largest hardwood industry in the State with significant economic in-

Ernst & Young say they estimate that through direct and indirect effects the NSW hardwood timber industry contributes to the NSW economy:

▶ \$2.9 billion in Gross Revenue ▶ \$1.1 billion in Gross Value Add ▶ 8,900 Full-Time Equivalent (FTE) positions

ERNST & Young have released their economic contribution study of the NSW hardwood timber industry indicating the industry continues to be a key economic contributor in NSW. The report was released last week, February 25th, and comes just a month ahead of the state election in which forestry is playing a key role.

According to the Ernst & Young report, the New South Wales (NSW) hardwood timber industry is one of the largest employers and hardwood-producing industries in Australia (ABARES 2022).

For NSW, the hardwood timber industry provides a key source of income, economic activity and employment opportunities in some remote and regional communities, reflecting the location of native forests and plantations.

The industry's economic impact flows beyond direct harvesting activities, supplying and servicing several downstream sectors, including construction, transport and manufacturing. The increasing value of hardwood timber logs produced in NSW reflects the strength in demand for logs used across several products.

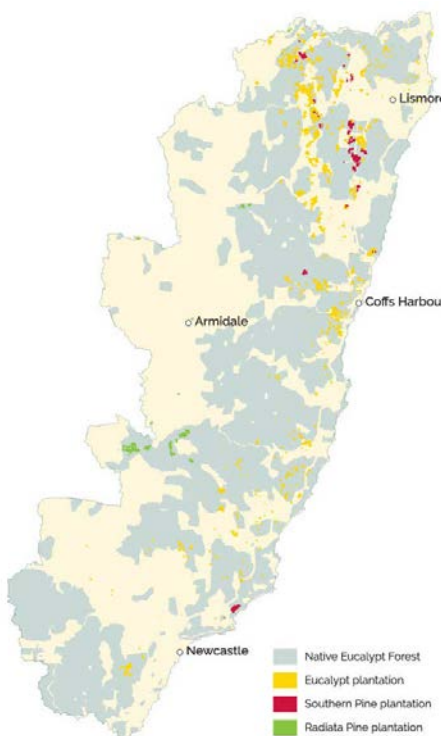
NSW Region	Gross Revenue (\$ million)	Gross Value Add (\$ million)	Employment (FTE)
North East	\$1,840	\$700	5,700
Southern	\$720	\$270	2,230
Western	\$260	\$100	820
Greater Sydney	\$80	\$30	240

Economic contribution for hardwood by region in NSW.

For example, hardwood timber is a key input in cladding, panelling, building, fencing, and agriculture products. The analysis included in the report estimates the economic impact of the hardwood timber industry on the NSW economy in 2021-22.

In the report, the hardwood timber industry was broken into four different regions, including North East, Southern, Greater Sydney and Western. The economic impact of the NSW hardwood timber industry.

According to the findings,



North East NSW Regional Forest Map.
Courtesy North East NSW Forestry Hub

the Northeast NSW region is estimated to hold the largest regional hardwood timber industry, contributing an

estimated \$1.8 billion in gross revenue to the NSW economy.


It is also estimated to be the largest employer, more than double the next largest region. Greater

Sydney is the smallest region in relation to gross revenue, value add and employment. However, for this region, the majority of the estimated economic impact is contributed by associated downstream sectors, with the Greater Sydney region using hardwood timber for wholesaling, processing and manufacturing.

According to the report, the analysis indicates that the NSW hardwood timber industry has a large direct and indirect impact on the NSW economy and is much larger than current ABARES and ABS reporting.

“The analysis in this report uses a broader definition than ABARES and the ABS which generally focuses on direct harvesting activities, rather than the economic impact from processing and

Cont P 3



Termite Professional Conference

July 5-7 Sunshine Coast

Click or Scan QR Code to find out more...



Women in the lead - New President for Forestry Australia

THE Board of Forestry Australia has announced that Dr Michelle Freeman has been elected president and Jim Wilson has been elected vice president of the peak organisation for forest scientists, professionals, managers and growers.

Retiring President, Bob Gordon applauded the move stating he was delighted to see Michelle and Jim join with the organisation's CEO Jacquie Martin, to form a diverse leadership team, as part of the Board transition and renewal process.

"It is heartening to see Michelle accept the nomination to take the leadership of the team, particularly on the eve of International Woman's Day," Mr Gordon said on Tuesday.

"Michelle has been on the Board for a number of years and has already made a very significant contribution to Forestry Australia and I look forward to her leadership," Mr Gordon said.

Michelle is a forester with a passion for native forest management and has a double degree in Forestry and Science (Ecology), and a PhD from the University of Melbourne.

Her PhD was in partnership with CSIRO Darwin looking at savanna fire and tree dynamics of northern Australia, as part of the Tiwi Carbon Study.

Michelle is a Registered Forestry Professional and has worked in timber harvesting operations, planning and regulation and is currently the principal consultant and



Newly appointed Dr Michelle Freeman takes on the role of president.

Advisory Council, a past Board member of FSC Australia/NZ, and is a graduate of the Australian Institute of Company Directors.

Michelle is joined by Vice President, Jim Wilson who has a Bachelor of Science (Forestry) Australian National University 2003 and is the plantation operations and services manager at Forico, Tasmania.

director of Hollow-wood Enterprises.

Michelle was on the Board of the IFA from 2012 – 2014, and chaired the Future Foresters Initiative from 2015 – 2017. From 2014 – 2017 she was an independent council member on the Federal Governments' Forest Industry

He is a Registered Forestry Professional and graduated from the Australian Institute of Company Directors and Australian Rural Leadership Program.

Bob Gordon will remain on the Board during this transition period.

TABMA AUSTRALIA **HARDWARE AUSTRALIA**

NATIONAL CONFERENCE

25-26 MAY 2023
HUNTER VALLEY

1800 822 621
events@tabma.com.au
www.2023-tabma-national-conference.com

BOOK NOW

From P 3

wholesale activities," the report states.

"Across NSW, we estimate the hardwood timber industry contributes approximately \$2.9 billion in gross revenue, \$1.1 billion in gross value add, and supports approximately 8,900 Full Time Equivalent (FTE) jobs.

Additionally, the economic

impact of the hardwood timber industry in NSW extends beyond direct harvesting activities, having flow-on effects across some processing and wholesale distributions. As outlined on page 10, hardwood timber undergoes multiple processes to transform the raw product into furniture, construction materials, and other construction uses.

Alongside this entire supply chain are transport and road services, which move the hardwood timber products from each destination. Each point across the supply chain generates new economic activity feeding into the NSW economy.

“REPORT SHOWS THE ECONOMIC CONTRIBUTION TO THE STATE FROM HARDWOOD

Meet the supplier - Australian Sustainable Hardwoods (ASH)

MOST people can agree that the importance of environmental sustainability cannot be overstated.

As global temperatures continue to rise, natural resources become scarcer, and the public perception of native forestry in Australia may need revision, it has become clear that every individual and organization is taking steps towards a better understanding of sustainability. Fortunately, there is a growing trend among companies to recognise the role they play in protecting the environment and taking significant steps to reduce their carbon footprint

“SUSTAINABLE
TIMBER IS THE
ULTIMATE
RENEWABLE



Australian Sustainable Hardwoods (ASH) have a commitment to sustainability.

and adopt sustainable practices through independent certification. From small start-ups to multinational corporations, businesses of all sizes and industries are realizing that environmental sustainability is not only good for the planet but also makes good business sense.

Today in meet your Certified Supplier we meet ASH.

Australian Sustainable Hardwoods (ASH), a leading supplier of innovative hardwood products, recently welcomed Responsible

Wood Sustainability Manager Matt de Jongh to tour their facilities, including the impressive MASSLAM product. The tour highlighted ASH's commitment to sustainability and its efforts in promoting the use of wood as the ultimate renewable building material.

Vince Hurley, managing director of Australian Sustainable Hardwoods, emphasized the company's efforts to add value to their timber, from log to finished product, with their range of species including Victorian

ash, Tasmanian Oak, American Oak and Plantation Oak. He highlighted the benefits of their MASSLAM product, stating; "Our MASSLAM range utilises uniquely attractive Australian timbers and our CNC process allows for longer spans, higher ceilings, increased floor space, lesser beam depth, and lower associated

installation costs. Mass timber like MASSLAM is cheaper to construct than concrete and steel, looks better, is safe, sustainable, and efficient".

Matt De Jongh praised ASH's commitment to sustainability.

"ASH's belief that certified sustainable timber is the ultimate renewable is commendable," he said.

"By sourcing from well-managed certified timber

Cont P 6

Enabling sustainability...
through world-class standards

responsiblewood.org.au



From P 5

sources, ASH is promoting the use of arguably the most environmentally friendly building product available."

ASH is committed to reducing carbon emissions in the building industry and believes that swapping concrete and steel for timber, whether in large or small buildings, will greatly contribute to this goal. Hurley emphasized the importance of communicating to their customers the benefits of using timber in construction and its positive impact on the environment.

The use of wood in construction and building products has numerous advantages over other materials, especially when it comes to reducing the effects of climate change. Wood is a natural, renewable resource that helps to reduce resource depletion of our planet,



ASH was involved in a Victorian hardwood campaign last year.

and increase the amount of carbon dioxide removed from the atmosphere and the carbon dioxide stored in wood. In other words, wood is a carbon sink, absorbing and storing carbon throughout its life cycle.

By choosing timber as a building material, not only do we reduce the negative impact on the environment, but we also support a sustainable industry that provides jobs and helps to

preserve our forests for future generations. Wood is the ultimate renewable, and by using it in construction, we

can help ensure a sustainable future for all.

It is important to help everyone understand the natural advantages of wood and its positive contribution to reducing the effects of climate change. Using wood in construction instead of non-renewable materials such as concrete and steel can greatly reduce the carbon footprint of the building industry. This is why ASH is committed to sourcing sustainable forest products and promoting the use of timber in construction, as a step towards a more sustainable future.



Develop our future workforce

ForestWorks is an industry-owned not-for-profit organisation offering services to support the skills development of the forest, wood, paper, timber and furnishing industries.

ForestWorks works with industry, government and the education and training sectors to improve skills standards and qualifications and support the development of forestry-related industries, their people, and enterprises.

To find out more:

Email: forestworks@forestworks.com.au
 Phone: 1800 177 001
www.forestworks.com.au

No need to fret over inflation with lumber prices set to fall

DAVID Rosenberg, chief economist and strategist at Rosenberg Research & Associates, has brushed off inflation fears again by pointing to falling lumber and natural gas prices in the US.

The veteran economist talking to Market Insider has repeatedly dismissed inflation as a threat since late last year. He has argued that the upward pressure on consumer costs has now faded, saying it's "in the rear-view mirror," while forecasting the rate of price increases could cool

down below 2% by the third quarter of 2023.

This time around he seemingly mocked fears about consumer-price pressures by questioning their existence outright in a Monday tweet,

"Inflation?" he asked. "Maybe in wages in 25% of the economy - the select low-skilled service sectors the Fed is focused on. Meanwhile, the likes of lumber and nat gas are quickly heading back to their cycle lows and both down more than -70% from the nearby peaks," he added.



Calling commercial forestry operators

Find out more at
wa.gov.au/fpc/commercial-opportunities



MARCH

27: Field Days at Levendale – Tasmania. The March event is the second of two and will be held in the southern Midlands region, 53 km north of Hobart. The Southern Midlands Council area 53 km north of Hobart. **Time: 9 am-1.00 pm.** Contact admin@pft.tas.gov.au or call (03) 6477 7389 for more details.

APRIL

25-26: Institute of Chartered Foresters National Conference 2023: Connecting Trees, Farmers and Foresters – ONLINE EVENT. Exploring how to integrate trees into the farmed landscapes and build relationships between farming and forestry. For further information see: <https://www.charteredforesters.org/event/national-conference-2023-connecting-trees-farmers-and-foresters>.

MAY

15-18: Ligna trade show – Hannover, Germany. The world's leading trade fair for the woodworking and wood processing industry is jointly organized by Deutsche Messe and VDMA Woodworking Machinery. It showcases the entire range of products and services for the primary and secondary

industries – tools, machines and systems for custom and mass production, surface technology, wood-based panel production, sawmill technology, energy from wood, machine components and automation technology, as well as machines and systems for forestry, round wood and sawn wood production.

18-19: The Forest Industry Engineering Association – Melbourne. Woodtech would be showcasing new innovations, new products and new equipment to improve local sawmilling, wood manufacturing and wood panel company's operating efficiencies - and profitability. For bookings: <https://www.eventalways.com/woodtech>

25-26: TABMA National Conference and Awards – Crowne Plaza - Hunter Valley, NSW. TABMA Australia and Hardware Australia will be joining forces and hosting a national conference and awards program in 2023. TABMA and Hardware Australia are proud to announce the 2023 Timber & Hardware National Conference to be held in the Hunter Valley. Offering members and industry representatives an opportunity to connect as industry leaders and come away with information and tools to take back to your

business to help you today and succeed in the future. As part of the National Conference, TABMA Australia and Hardware Australia will be hosting the National Awards program for the industry to participate in. The awards recognise the outstanding achievements of individuals and organisations in delivering or producing high quality products and services. For any queries contact events@tamba.com.au. For bookings: <https://www.trybooking.com/events/landing/993638>

28-2 June: International Research Group (IRG) on Wood Protection – Cairns, QLD. The IRG is the world's peak world body on timber durability research and will be hosting more than 250 researchers from 30-40 countries to discuss new developments in the field. Information about the conference and registration is available at: www.irg-wp.com/IRG54/index.html

31-1 Doing Timber Business in Queensland Symposium & Field Tour – Brisbane. The 4th Biennial symposium Doing Timber Business in Queensland 2023: Preparation, Opportunity, Success will delve into where growth potential for Queensland's forest and timber industry is most likely to occur. This

special event will commence with an industry research and development tour on 31 May, followed by a symposium and networking event on 1 June. For more information admin@timberqueensland.com.au

JUNE

18-20: Malaysian Wood Expo – Kuala Lumpur, Malaysia. Malaysian Timber Council, International Wood & Woodworking Expo. For further information see: www.malaysianwoodexpo.com.my or email: info@malaysianwoodexpo.com.my

AUGUST

29-30: Timber & Forestry enews Australian Timber Supply Summit – Melbourne. Early warning alert. For any queries relating to the conference, please contact CORP COMM. Email: info@corp-comm.com.au Phone: +61 3 5977 0244

OCTOBER

15-19: ANZIF Conference: Embracing our natural capital: The science, technology, and art of managing forests for all values – Twin Towns Conference Centre, Coolangatta, Queensland. Further details from Forestry Australia at: <https://www.forestry.org.au/>



Do you crosscut timber packs at $\pm 1\text{mm}$ accuracy
OR cut structural timber, panel products (MDF & LVL), paper rolls
OR produce pallet dimensions or studs on fixed lengths

HOLTEC has a solution for you

For more information contact:
 Ph: +64 9 416 8294
 Fax: +64 9 416 8296
 Email: sales@holtec.org
 Web: www.holtec.org

HOLTEC
 YOUR PARTNER FOR THE PERFECT CUT

Our Scope of Supply:

- Mobile and stationary chainsaws
- Timber crosscut stations
- Log cutting stations
- Circular saws
- Mechanisation
- Sorting lines
- Scanning and optimising systems
- Special systems

NZ farm foresters/landowners face ‘new normal’ as regulations bite

FOLLOWING on from our recent discussion with Graham West, President of the NZ Farm Forestry Association (NZ FFA), he talks further about the organisation’s activities; reaching net carbon zero by 2050; and the recent devastating weather events on the North Island’s east coast.

Mr West noted previously that the NZ FFA is putting more effort into professional engagements. Last year, members of the organisation held three pilot workshops aimed at encouraging hill country farmers to grow more trees.

“THE NZ FFA IS PUTTING MORE EFFORT INTO PROFESSIONAL ENGAGEMENTS



Farm forestry field trip: this year’s conference focuses on a number of regulatory issues.

“These were funded by Te Uru Rakau – New Zealand Forest Service, and we are currently working with them to continue this style of information dissemination. But we also need to be more effective with the internet to reach not just a few hundred landowners but the 50,000 in New Zealand.”

Postponing the association’s annual

conference last year was a difficult decision – but ultimately the right one after weighing up concerns about the health and safety of attendees, and the financial viability of running the event.

Last year’s theme (‘The new normal: Opportunity or threat?’) will be kept for this year’s conference – with a focus on carbon and the implications of the Emissions Trading Scheme;

and practical ways to apply the National Environmental Standards.

“Our reformist Government has many regulatory changes coming at landowners – for example, water quality, emissions, biodiversity and afforestation. They are being pushed to make many strategic decisions when

ACROSS THE DITCH



With MICHAEL SMITH

Cont P 9

Investing in people ... advancing the industry

Grant award applications for 2023 are now open:

- Skill Development Support
- Scholarships
- Fellowships

Don’t miss this opportunity – all details www.gottsteintrust.org
Applications close on Friday, 5th May 2023.

Contact: Helen Murray
on 0419 991 424 or
team@gottsteintrust.org



From P 8

labour is scarce, and costs are rising. This seems to be the 'new normal'."

Mr West is happy to contribute to the debate on the country's strategies to reduce net emissions – including the development of permanent carbon forests.

"The topic is very controversial and policy on this is volatile. We have investors and some

landowners capitalising on the high cash flows that may be available for 50 years. Others – who hate pines and are pro-natives or pastoral farming advocates – believe it's the wrong strategy.

"Personally, I see no alternative to a large offsetting program with forests in the hope we can have international influence from the moral high ground of having a clear plan to attain net carbon zero by 2050."

Cyclone Gabrielle

FOLLOWING the widespread damage that resulted from the recent cyclone, Mr West reached out to the chairpersons of the FFA's East Coast and Hawkes Bay branches.

"Members have had some damage from slips and wind damage in young stands. It's hard to generalise the cyclone's impact because it has been incredibly varied across the region and depends a lot on localised rainfall totals. Some got 200 mm or less, while others got over 400 mm in 24 hours."

He adds that the NZ FFA welcomes the recently announced ministerial inquiry into past and current land-use practices – and the impact of forestry slash and sediment following this year's two cyclones and other weather events.

"We also suggest it should be broader and look at land use generally on these fragile soils. It appears the problem is not only harvested cutovers, with massive mid-slope



Cyclone Gabrielle: Mr West says it's hard to generalise the cyclones impact. Photo: Nasa

landslides in areas recently waste thinned, that are contributing to felled trees.

"Engineered slash catchers were not allowed [or consented] on many sites because they feared dams would be created. Old poplars and willows in riparian zones have added to the slash."

He says the basic issue with woody debris is trying to find "a high-value product that we can make locally from a low-quality wood resource".

"There is a strong call for the region to be planted with indigenous species, which ignores the economic consequences for employment in the area. Personally, I don't think we have all the answers and we'll need to relearn sustainable forestry management in the face of climate change."

**Renewable.
Sustainable.
Reliable.**

P: 07 3147 8790
E. sales@vidawood.com

VIDA
MADE IN SWEDEN

CANFOR
MADE IN CANADA

Furniture importers fined over risk of illegal harvest timber

THE Department of Agriculture, Fisheries and Forestry has fined 14 furniture importers over \$186,000 last week because they didn't act to minimise the risk of importing illegally harvested timber.

Head of Compliance and Enforcement at the department, Peter Timson said Australia has strict requirements for importing timber and it is essential to hold importers to account.

"We are enforcing our powers to help combat illegal



DAFF has charged a number of importers over threats of illegal timber products.

logging which has been linked to organised crime, civil unrest, corruption, species extinction and environmental destruction around the world," Mr Timson said.

"Importers must conduct adequate due diligence assessments. They must understand where they are sourcing their timber from and to limit the risk of it being illegally harvested. These

importers didn't follow the rules and fourteen fines were issued of \$13,320 each.

"The illegal trade can comprise up to 10% of timber products entering Australia, undercutting local Australian production, regional businesses, and communities.

"It's important that Australians have confidence that their furniture, housing materials and other timber

products come from sustainably and responsibly sourced timber.

"Australia's strict timber importing requirements set a high bar internationally. We also work with APEC member economies and relevant international organisations to combat the trade in illegally logged timber products globally."

The fines were issued under the Illegal Logging Prohibition Act 2012 and the Illegal Logging Prohibition Regulation 2012.

For further information on importing timber products to Australia, visit www.agriculture.gov.au/agriculture-land/forestry/policies/illegal-logging/importers

“10% OF TIMBER PRODUCTS ENTERING AUSTRALIA COULD BE ILLEGAL

BUILD BETTER WITH ATS

At ATS Building Products, we understand that everything has to line up. Great projects – no matter the size – require a mix of quality, timeliness, & competitive pricing.

You can count on our team to make sure your projects run efficiently and deliver value from start to finish. We are driven to help you do your best work.

Right products. Right time. Right price.

Visit us in person or online at www.ATSBP.com to learn more about how we can help you build better.

NSW	NSW	NSW	QLD	VIC	SA
157 Briens Road Northmead, 2152 t. 1800 577 551	17-23 Longfeld Street Lansvale, 2166 t. 1800 577 551	4B/400 Moorebank Ave Moorebank, 2170 t. 1800 577 551	Unit 3 / 153 Rossmanns Rd Stapylton, 4207 t. (07) 3667 8217	372 Lower Dandenong Rd Braeside, 3195 t. (03) 9034 3994	48 Lipson Street Port Adelaide, 5015 t. (03) 9034 3994

Cultivate your career growth with a Scholarship Award

TIMBER Queensland's Growth Scholarship program aims to make the idea of applying for a scholarship simple, accessible, and fair process. You don't need to be a forest scientist to apply – but if you are you can apply too!

Open to early career professionals (18 – 45 years) who reside in Queensland, Growth Scholarships provide financial assistance (e.g., cost of course/fees, travel) for a learning project.

A learning project can include informal and formal experiences and innovation learnings, such as assistance with on-the-job training, short courses, study tours, components/units of formal qualifications, attendance at conferences and events, short-

term work placements and/or secondments to gain experience.

With Awards ranging from \$10,000 to \$2500 you can think big and suggest an overseas study tour or consider doing a short course to help you improve your knowledge and advance your career prospects.

Timber Queensland's strategic relations Manager Clarissa Brandt said the inaugural program invited early and mid-career professionals and skilled workers to submit details of a proposed learning project that would enhance their career



Applicants are encouraged to propose a learning project that would enhance their career and benefit the local industry.

and benefit local industry.

"To have a timber engineer, an operations and production worker, a forester and a forest scientist receive awards met one of the goals that Timber Queensland and Michael Kennedy, CEO of Scholarship

Foundation Partner Kennedy's Timber, put in place for the Awards," said Ms Brandt.

"We strongly encouraged people working in forestry and wood processing and manufacturing operations to apply and advance their careers, just as we encouraged those in forest science and technical development to make an application," she said.

At lunchtime on 28 March 2023 the 2022 – 2023 Adam and other Growth Scholarship Award winners will participate in a webinar to discuss why they applied for an award, how they came up with a learning project idea and other points.

The 2023 - 2024 Growth Scholarship applications open on 28 March and close on 30 June.

arxada

Always in demand

TRUST
Ecowood®

TREATED TIMBER PRODUCTS

Ecowood® is a registered trademark of Arxada or its subsidiaries. ©2022 Arxada

Tourism, art, health and environmental goals as masterplan revealed for Bago State Forest

AFTER years of careful planning, interrupted by bushfire, floods and a global pandemic, the Bago State Forest Nature-Based Tourism Enhancement program was launched last week with the reveal of its long-awaited Masterplan.

The 'Bago State Forest - Snowy Valleys Tourism Upgrade Program' Masterplan was shared at a ceremony at Pilot Hill Arboretum in Bago State Forest, hosted by the Forestry Corporation of NSW.

Over 70 invited guests were on hand to show support for the Masterplan reveal, which details planned upgrade works at 5 visitor sites in Bago State Forest, located within the NSW Snowy Valleys, close to the townships of Tumbarumba and Tumut.

Developed under the NSW Government Regional Growth and Environment Tourism Fund, the Masterplan aims to deliver growth in the local and regional tourism economy through improved forest-based visitor experiences incorporating art, health and wellness, and environmental projects.

New visitor facilities, walking trails, signage and interpretation, timber sculptural elements and environmental restoration within Bago State Forest are key elements of the plan.

"Bago State Forest has an incredibly diverse landscape and is a fantastic part of the Snowy Valleys," said Brendan Grimson, Forestry Corporation partnerships leader – Southern NSW.

"We are incredibly excited to be launching this unique project, built on the principles



Smoking ceremony for the masterplan reveal.

of 'Caring for Community' and 'Caring for Country'. Traditional Owner culture and heritage, art and sculpture, visitor health and wellness, showcasing local hardwood and softwood timber, are all equally important elements of proposed works," said Mr. Grimson.

"Bago State Forest also supports large areas of sensitive Montane Peatlands. This project aims to enhance the visitor experience in those areas whilst also delivering restoration of degraded peatlands."

"A strong multi-disciplinary team brought together by design underpins the Bago State Forest Masterplan. Partners The Mulloon Institute, NSW Health, Sculpture by the Sea, The Connective Co., Planet Ark, and Tumut Brungle Local Aboriginal Land Council, all on board."

Jenni Wines, Bushfire/ Disaster Recovery Clinician, said Murrumbidgee Local Health District was excited

to be a partner in the Bago project.

"We are now starting to view nature as an important preventative healthcare and self-care model, with enormous community reach. We are bringing clients to Pilot Hill Arboretum, using the facilities and walking trail as a therapeutic session," said Ms. Wines.

David Handley AM, founding CEO and artistic director of Sculpture by the Sea, said the Bago State Forest project afforded the opportunity to extend their successful Snowy Valleys Sculpture Trail.

"Bago State Forest is a fantastic part of the Snowy Valleys which offers a very different experience for visitors to the Snowy Valleys Sculpture Trail. Our three Bago project sites, our "Sculpture Forest," is perfectly positioned in the middle of the existing Sculpture trail, giving the visitor 3 unique experiences all within a very short drive," said

Mr. Handley.

"Forestry Corporation of NSW has been fantastic to work with, they welcomed us with opened arms right from the start."

Bill McAllister, a Landscape Planner from The Mulloon Institute, agreed.

"We are incredibly excited to be given the opportunity to be working with Forestry Corporation of NSW on the restoration of Montane Peatlands. One really important element

of Montane Peatlands is that they store tonnes and tonnes of Carbon dioxide. This makes their restoration a positive step to tackling climate change," said Mr. McAllister.

Dr Joe McGirr MP, Independent Member for Wagga Wagga, noted that the announcement was important for the Bago State Forest and for the local community as a whole. "The investment made here is going to greatly bolster tourism opportunities, leading to more jobs and economic benefits for the community."

"This is a particularly special project in the wake of the 2019/20 bushfires. I hope it will help in the ongoing recovery of community – not only financially through tourism, but also emotionally through a regenerated, accessible landscape," said Mr. McGirr.

"I am greatly pleased to see First Nations practices, culture

Cont P 14

Ikea teams with Canopy to help preserve ancient and endangered forests

GLOBAL home furnishings retailer Ikea has joined Canopy in an effort to keep ancient and endangered forests out of the viscose supply for home textiles and to work toward supply chain transformation.

By joining the CanopyStyle initiative, Ikea is continuing its commitment to the world's forests and procuring viscose for home textiles only from producers that have achieved the highest ranking in Canopy's Hot Button Report.

Ikea is the first major retailer focused on the home textile and furnishing space to join CanopyStyle.

"At Ikea, we are guided by our forest agenda and want to ramp up our work to further enhance biodiversity, mitigate climate change and

drive innovation to use wood in even smarter ways – as the pressure on the world's forests continues to grow," said Lena Bischoff, material and innovation area manager, Inter Ikea Group. "In this endeavor, we are glad to work closely with Canopy and all of the retailers united through this initiative.

"The home textiles sector needs to step-up and ensure that the forest-derived textiles, like viscose and lyocell, only come from responsibly managed forests, and make a shift towards lower-impact alternatives."

The world's ancient and endangered forests are not required to make fabrics like viscose and rayon for fashion and home fabrics. These forest



The global retailer has paired with Canopy in an effort to protect ancient and endangered forests.

ecosystems are home to most of the world's life on land and are highly effective at capturing and storing carbon. Forests have been identified by leading scientists as a major part of the climate solution, and they are critical to addressing the biodiversity crisis.

"We are thrilled to have the globally iconic company Ikea join Canopy and commit to forest protection as part

of their textile sourcing practices," said Nicole Rycroft, Canopy's executive director. "Our work with Ikea heralds a new era for the lower-carbon and forest-friendly sourcing of viscose for home

products and furnishings. It will allow all of us to sleep more comfortably with vital forests kept out of the supply and Next Gen alternatives scaled in our bed sheets and beyond."

The CanopyStyle initiative now has more than 520 global brands, worth more than \$886.3 billion in collective revenue, collaborating to revolutionize the viscose supply chain.

NO ONE KNOWS AIR FLOW LIKE SMITHCO

We've been a leading force in air flow design for almost 3 decades, with 4-, 6-, 8-, and 12-bladed propellers, designed and manufactured exclusively for the lumber industry. Now, they are even more capable with higher- temperature capacity for certain applications. We combine this technology with unsurpassed customer service, design consultation and technical expertise, so whatever your air flow need, **you can trust SmithCo to deliver.**

Phone 503-295-6590 • 800-764-8456 U.S.
smithcomfg.com sales@smithcomfg.com



The united voice for Australia's forest industries



0408 404 764
enquiries@ausfpa.com.au
www.ausfpa.com.au



From P 12

and heritage being placed front and centre of the masterplan; an important consideration of respect, and leading to improved environmental, educational and cultural outcomes.”

Duty MLC for Wagga Wagga Wes Fang said the \$300 million Regional Growth - Environment and Tourism Fund has backed projects that activate iconic tourist attractions, grow destinations, and drive economic growth by increasing overnight visitation and business activity in regional NSW.

“The Regional Growth - Environment and Tourism Fund is delivering tourism projects and infrastructure that unlock growth in our regions

by attracting more visitors and tourists to our beautiful regional towns,” Mr Fang said.

“The program has funded over 60 projects across regional NSW and this project is a great example of what the fund is designed to deliver, I look forward to seeing the economic benefits it will produce for the region.”

Member for Albury, Mr Justin Clancy MP, said “This region was impacted in a devastating way by the

bushfires, and much was lost, including the much-loved Sugar Pines,” said Mr. Clancy.

“I’m excited to see this masterplan launched, as the iconic Sugar Pines were a feature of tourism in the area. This collaboration with Sculpture by the Sea will literally see another iconic tourism project rise from the ashes.”

“This is how we come back from disaster. It has had an ongoing effect on

the community as well as the forest, and this program and Masterplan will support sensitive environments whilst backing local tourism and hospitality businesses as they work hard to attract visitors and promote economic development and growth.”

The Bago State Forest Snowy Valleys Tourism Upgrade Program is made possible through \$1,910,988 in funding from the NSW Government Regional Growth Environment & Tourism fund.



1/ The cutting the ribbon at the masterplan reveal.



2/ The wellness walk will welcome visitors.

INVESTING IN INDUSTRY

Assuring forest contracting business' systems, processes and practices.



FORESTFIT
TRAINING AND
CERTIFICATION



TURN OVER A NEW LEAF.

WITH THE NEXT GENERATION
548 FOREST MACHINE



GROW PRODUCTIVITY

Up to 10% higher productivity
and swing torque



TRIM COSTS

Next gen fuel efficiency and
reduced maintenance costs



PUT DOWN ROOTS

25% increased cab space

• NSW/ACT WesTrac 1300 881 064

• QLD/NT Hastings Deering 131 228

• VIC/TAS William Adams 1300 923 267

• South Australia Cavpower 08 8343 1600

• Western Australia WesTrac 1300 881 064

• New Zealand TERRA 0800 93 39 39



**ADD VALUE TO YOUR
BUSINESSES.**
Through CVAs, we offer
customers the best possible
service and support.

CAT[®]
LET'S DO THE WORK.™

Ups and downs for Australia and New Zealand Wood Exports

MUCH like the rest of the global market, Australia and New Zealand have seen their share of ups and down over the past year. This is especially evident in most of the countries exports.

The Australian and New Zealand Export Log

the January 2022 number.

The combined index value for December trade shows that the average log price was 9.3% lower than the index starting point in January 2017.

The index combines and weights softwood log exports from Australia and

Available under the View menu on Wood Market Edge Online via SilvaStat360, the ANZ Log Export Price Index provides a snapshot of the log export trade and is supported by extensive downloadable files and other trade visualisations.

Australian softwood log exports down 66.1%

DECEMBER 2022 was the twenty-eighth consecutive month to record declines in Australia's annual softwood log exports. The annual volume dropped significantly compared to the year prior.

Softwood logs are now being chipped and exported after China imposed a ban on Australian logs. Across the year ending December 2022, Australia's total exports of softwood logs were down a significant 66.1% for the year.

India has emerged as a new market, receiving small but regular shipments. Monthly volumes fluctuated rapidly. For export, softwood logs are differentiated as

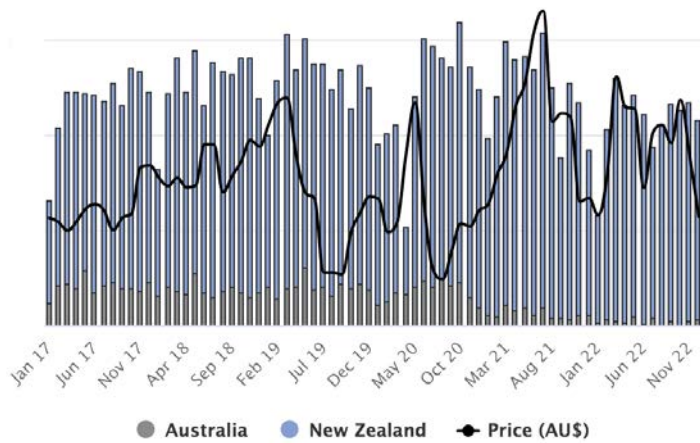
larger or smaller than 15cm in diameter. The distinction between log sizes was previously more noteworthy, but analysis has become challenging as monthly export volumes are increasingly erratic.

Annual woodchip exports up 13.9%

AUSTRALIA'S combined annual exports of hardwood and softwood woodchips for the year ending December 2022 were 13.9% higher than the prior year. Average monthly export volumes have trended upward since 'confidentiality' restrictions were introduced in the middle of 2020.

Australia's entire woodchip export trade, including both hardwood and softwood, is still masked by confidentiality restrictions. This is otherwise known as 'No Country Details' (NCD). Accordingly, no formal export data is available – only the monthly total volume and the total average price reported by the Australian Bureau of Statistics (ABS).

COMBINED MARKET PRICE WITH REFERENCE COUNTRY VOLUMES



Australian Softwood Log Exports Down 66.1%. Source: IndustryEdge

Price Index dropped in January 2022 to its lowest point in more than a year before rebounding sharply. Throughout the rest of the year it gradually declined, and by December the price index had fallen to a level lower than

New Zealand. It provides a consistent view of the price being achieved for the region's logs and for the combined trade from Australia and New Zealand. It also reflects each of Australia and New Zealand exports separately.



TIMBER TESTING CENTRE





Providing independent and experienced testing of wood products.

+61 7 3250 3777 | inbox@timbertc.com.au



Why are ecologists yelling at frogs out in the forest?

FORESTRY Corporation ecologists have spent the week walking through Bondo State Forest near Tumut calling 'hey frog' – The most effective survey technique for detecting the critically endangered Northern Corroboree Frog.

Amazingly, yelling 'Hey Frog' elicits a response from the frogs, which call out in response. Without this technique, the frogs would otherwise remain hidden in the wetlands, said Rohan Bilney, senior field ecologist with Forestry Corporation.

The survey program in the Bondo State Forest is part of a broader population monitoring effort across the species' range where Forestry Corporation ecologists are collaborating with NSW Department Planning and Environment's Save Our Species program.

"In late summer, the male corroboree frogs will call out in response to us bellowing "Hey frog" in a deep voice – they are usually sitting in their nest defending their territory," Dr Bilney said.

"So the survey method involves our ecology team



1/ Teams are adopting a new technique to locate the Northern Corroboree Frog.

2 Northern Corroboree Frog populations have declined across populations.

State forest, however, there has been a widespread decline across all populations, largely due largely to the disease chytrid fungus," Dr Bilney said.

"This year we are very interested to see how the population is faring, following drought, wildfires, the subsequent wetter weather since the wildfires and the ever-present threat of the chytrid fungus.

"If numbers continue to decline we may need to start looking at drastic options like captive breeding to ensure the species is able to persist."

Forestry Corporation

ecologists run a number of species-specific monitoring programs such as this to understand the health of threatened species on the State forest estate.

Spotlight on the industry

TIMBER Queensland is planning to put the spotlight squarely on future industry trends. Its fourth biennial symposium 'Doing Timber Business in Queensland 2023: Preparation, Opportunity, Success' will delve into where growth potential for Queensland's forest and timber industry is most likely to occur.

This special event will commence with an industry research and development tour on 31 May, followed by a symposium and networking event on 1 June.

"Our Doing Timber Business in Queensland events have earned a prestigious reputation for delivering quality content and speakers in great venues," said Timber Queensland's Strategic Relations Manager Clarissa Brandt.

Timber & Forestry eNews is the most authoritative and quickest deliverer of news and special features to the forest and forest products industries in Australia, New Zealand and internationally. Enews is delivered weekly, every Thursday, 48 weeks of the year. Advertising rates are competitive with any industry magazine. Timber&Forestry eNews hits your target market – every week, every Thursday!

HEAD OFFICE

Timber & Forestry eNews
PO Box 69, Potts Point, NSW 1335,
Australia
Phone // +61 (0) 417 421 187

PUBLISHERS

John Halkett // +61 (0) 417 421 187
johnh@timberandforestryenews.com
Dennis Neilson // +64 (0)7 349 2764
dana@dana.co.nz

EDITORS

Nicky Ainley // +61 (0) 410 538 034
news@timberandforestryenews.com
Donyale Harrison // +61 (0) 417 487 497
edit@timberandforestryenews.com

ADVERTISING

John Halkett // +61 (0) 417 421 187
johnh@timberandforestryenews.com
advertising@timberandforestryenews.com

The information contained in this publication has been obtained from sources assumed to be reliable. However, the publishers disclaim all warranties as to the accuracy, completeness, reliability or adequacy of the information displayed. Opinions expressed in Timber & Forestry e news are not necessarily the opinions of the publisher or staff. We do not accept responsibility for any damage resulting from inaccuracies in editorial or advertising. The publishers are therefore indemnified against all actions, suits, claims or damages resulting from content in this eNews.

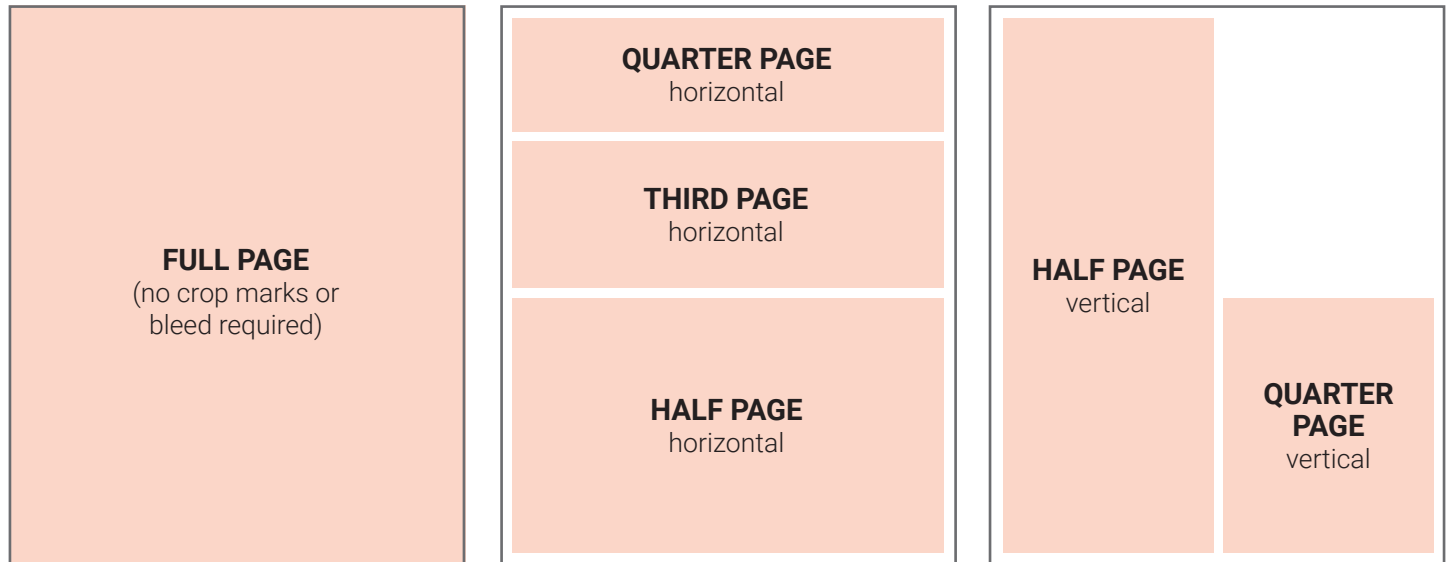
DELIVERED
WEEKLY TO
15,200
GLOBAL
READERS*

ADVERTISING RATES

timber
& FORESTRY *e*NEWS

Now in its 15th year, Timber & Forestry eNews has grown to be the Number ONE online weekly news journal for the forest and forest products industries – across Australia, New Zealand and internationally.

ADVERTISING SPECIFICATIONS



DISPLAY AD RATES

All pricing below is excluding GST and are based on a weekly booking. Overseas bookings are exempt from GST.

FULL PAGE: \$510

297mmH x 210 mmW

HALF PAGE: \$305

Vertical • 256mmH x 93mmW

Horizontal • 125mmH x 190mmW

QUARTER PAGE: \$195

Vertical • 125mmH x 93mmW

Horizontal • 63mmH x 190mmW

THIRD PAGE: \$225

Horizontal • 73mmH x 190mmW

PAGE 1 Front cover strip: Contract booking
Horizontal • 32mmH x 200mmW

PAGE 1 Front cover module: Contract booking
Horizontal • 45mmH x 50mmW

PAGE 2 below story: Contract booking
Horizontal • 73mmH x 190mmW

CLASSIFIED ADVERTISING

JOB ADS: ONLINE BOOKINGS ONLY

BUY & SELL ADS: ONLINE BOOKINGS ONLY

744pxH x 720pxW

TERM DISCOUNTS

12 WEEKS: 7.5% 24 WEEKS: 10% 48 WEEKS: 15%

Timber & Forestry eNews is published by Timber & Forestry eNews PO Box 69, Potts Point, NSW 1335, Australia. Phone: 0417 421 187.

Delivered every Thursday, 48 weeks of the year to industry decision makers in Australia, New Zealand, the Asia-Pacific, North America, UK and Europe.

DEADLINES

Display ads: Book by 9am Tuesday prior to publication

Supplied artwork: Wednesday 12 noon prior to publication. Supply hires jpg or pdf to our specifications. **NO crop marks or bleed required.**

Classified advertising: JOB ADS ARE COMPLETELY ONLINE.

Go to www.timberandforestrynews.com/post-a-job/ to place a job vacancy. **Book by 12noon Wednesday prior to publication.** Job ads are for individual positions. If more than one position is to be advertised, separate ads will need to be created and advertised accordingly.

BUY & SELL ADS ARE ONLINE AND IN THE PUBLICATION. Go to www.timberandforestrynews.com/product/buy-sell-advertisement/ to place an ad. **Book by 5.00pm Tuesday prior to publication.**

TERMS

New clients invoiced on booking. Existing clients 14 days.

WHO TO CONTACT

Media releases and editorial: Nicky Ainley e: news@timberandforestrynews.com and Donyale Harrison e: edit@timberandforestrynews.com

Display ad bookings: e: advertising@timberandforestrynews.com // **Accounts:** e: johnh@timberandforestrynews.com