

DELIVERED
WEEKLY TO
15,200
GLOBAL
READERS*

Like and
follow us on



ISSUE 816 // August 15 2024

timber & FORESTRY *e*news

Timber Construct 2024 hits goals

COVER STORY P 2



**Do you
have
a job
position
to fill?**

ADVERTISE TODAY



timber
& FORESTRY *e*news

Wood Solutions
**BOOST
YOUR
CUSTOMER
BASE**
CREATE A FREE SUPPLIER LISTING ON
THE WOODSOLUTIONS WEBSITE
GET STARTED



Speak to us about
EUDR implications.
Click here.

ALL UNDER ONE ROOF

- ◆ IR SUPPORT
- ◆ TRAINING
- ◆ EMPLOYMENT
- ◆ WHS
- ◆ COMMUNITY



NTHA
NATIONAL TIMBER &
HARDWARE ASSOCIATION

1800 822 621

Timber Construct 2024

Leading timber builders and policy makers gathered in Melbourne for this year's conference.

By **CHRIS PARKER**

THE opening morning of Timber Construct 2024 galvanised delegates, speakers and exhibitors alike. Organiser Andrew Dunn and his team are to be congratulated on their significant effort bringing together a range of expert speakers – both in person and attending remotely from overseas.

We commenced with a session talking about developers choosing timber and the latest timber engineering developments, chaired by Kevin Peachey of FWPA. Three project leaders who have been driving the way for timber construction discussed their work, including Melbourne's Ferrars & York apartments and the TallWood House at Brock Commons.

The mid-morning session was a key focus panel: 'Timber takes on Housing Shortfall', chaired by Kersten Gentle of FTMA.

Delegates listened to presentations from Jeroen Weimar, Victoria's Deputy Secretary of Housing Implementation, who gave an



From left, Glenn Britton, David McGuire and Brett McKay of McKay Timbers Tasmania were among the attendees learning about the newest timber innovations and opportunities. Photo: Chris Parker

overview of current challenges. Victoria expects its population to increase from 6.8 million to 10.3 million by 2051, with the majority of this growth in the greater Melbourne area. Already, Victoria's housing supply is lagging existing demand. While his focus is Victoria, the situation in other states and territories is similar. But Weimar had cause for optimism, saying growth will come from undeveloped greenfields in the outer suburbs and through a renewal process of replacing existing

single dwellings with new townhouses and multilevel housing.

Meeting that need comes down to people like Peter Ward of Drouin West Timber & Truss. He presented on DWTT's FutureFit panelised building system. The business has over 40 years of frame and truss experience and with its new offsite fabrication system has been able to reduce double-storey builds to 2.5 days on site and triple-storey builds in 3.5 days. The system has also achieved waste reduction,

improved safety and made the whole site cleaner and faster.

Tim Newman of Timber Building Systems is another leader in delivering into this area. TBS is celebrating 10 years of delivering for clients as varied as New Zealand's social housing program, Meyer Timber offices in Sydney and eco builds in Victoria. One key area of focus has been the successful delivery of social and medium density housing using modular systems made up of timber-based wall, floor and roof panels and cassettes that allow for quick and easy assembly. Wall panels include windows, flashings and pre-painted cladding, so they arrive on site ready to slot together with instantly great acoustics and insulation, plus individual-looking exteriors straight from the manufacturer.

Next up in the panel was Jeremy Church of NeXTimber, who talked about hybrid CLT lightweight framing. NeXTimber has manufacturing facilities in Tasmania and

Cont P 3

Preserve the Environment, Preserve Timber





Choose a timber preservative that respects our environment and make a difference today.

- Global GreenTag GreenRate™ Level A Certification
- Global GreenTag GoldHEALTH™ Healthrate™ Certification
- MicroPro® preserved timbers are suitable for use in National Parks

www.kopperspc.com.au
1800 088 809

New method for estimating forest health

OVERALL tree health is reflected in the nutrient levels of their leaves: those growing in environments that meet their needs are able to take up and benefit from the full range of micro and macro nutrients the plant requires for optimal growth.

Historically, this has been tested by collecting foliage samples and lab testing them, which is expensive and time-consuming at forest-wide scales. Now, new research published in the *Journal of Remote Sensing* shows that using a combination of spectral data and partial least squares regression (PLSR) models, teams from the Universities of Massachusetts and Virginia were able to accurately estimate forest health, as well as reveal information about the geological information of the soil.

PLSR is a statistical method designed to cope with very large sets of correlated independent variables – in layperson's terms, it's good at

making sense of the large amount of data that comes from spectral sensing.

A series of investigation sites were identified and traditional testing was done on healthy trees in those sites, then foliar reflectance spectra at 350–2500nm were measured using a spectroradiometer. The teams investigated spectral data associated with micro and macro nutrients in the leaves of four major genera (*Acer*, *Betula*, *Fagus*, and *Quercus*) as well as measuring and factoring in the relationship with the soil type each tree grew in.

As the study conclusion says, "The developed PLSR model predicted plant nutrients with moderate to strong accuracy for

macro- and micronutrients in temperate hardwood forests of New England."

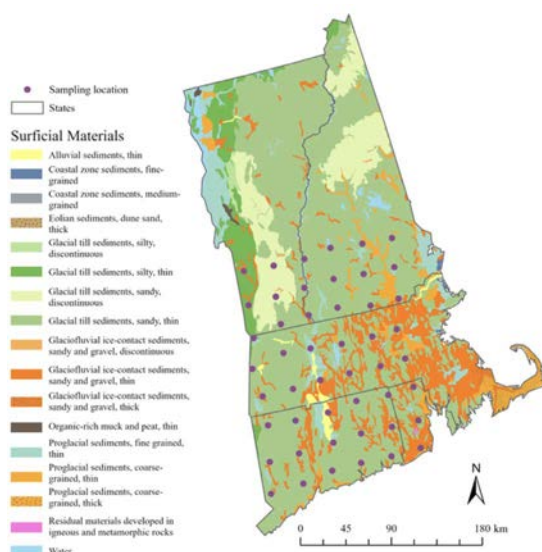
Performance was more accurate for macronutrients than micronutrients and there were also broad differences in accuracy between different genera and different soil types. However, the overall level of accuracy is highly promising, and the inclusion of soil types in the assessment definitely

improved the accuracy of results.

Future development of this model will require base data collection for different types of trees and soils, but the time and cost savings that would follow this investment look to be significant. The method also allows for faster responses to changes in the environment, including drought,

increased pollution and temperature shifts thanks to climate change. This information could be used to determine which species are best suited to plantation growth in specific areas and spot changes in established forest health early enough for management changes to have positive effects.

To read the whole paper, click here.



The study's Figure 1: Location of sampling sites and geologic surficial materials. Image: *Journal of Remote Sensing* (2024)

From P 2

South Australia and has been specifying its mass timber products into manufacturing floor and roof panels, framed and shear walls.

Tim Newman of XLam Australia spoke about the affordable CLT building system XLam has been developing and its capacity to meet market demand. While mass timber still has significant room for expansion in Australia, he shared XLam's experience with over 12,000 successful projects already delivered.

Finally, Nathan Benbow of Australian Sustainable Hardwoods described ASH's advanced timber composite



Engineer Matt Smith from Simpson Strong Tie testing his skills using the ASH mini-crane to install a floor cassette on the conference exhibitors' floor. Photo: Chris Parker

(ATC) flooring system and its connectors. This timber and concrete system takes advantage of the strength of each material in a way that

is competitively priced and also highly resource efficient and is tested to comply with acoustic and fire requirements. Benbow discussed the ATC's

and timber's use in multi-level staircases and reiterated the message that the Australian market was well placed to deliver on our housing needs with materials that prioritise sustainability (no surprise for that message to be coming from Responsible Wood/PEFC certified ASH).

With over a day of insights yet to come from the conference, look for more coverage in future issues of *T&F Enews* and also *Timber Trader News*.

On the cover: From left, FWPA's Rhiana Archie and Sarah Downey, FTMA's Kersten Gentle and Dean Ashton of Multinail at the Timber Construct 2024 conference. Image: Chris Parker

OneFortyOne's new NZ build

The business's new NZ Forests build celebrates timber.

THE new headquarters for the OneFortyOne NZ Forests team in Hope, Tasman is nearing completion and the build is already bringing joy.

Conceived as a timber-rich structure, it was designed by Irving Smith Architects and built by Scott Construction New Zealand with glulam posts, LVL rafters and the largest timber floor the builders have ever installed.

"As a forestry business, we wanted to show how timber could be used to achieve a carbon-neutral build," said Wendy Norris, OneFortyOne CEO. "The amazing thing about wood is that it's the best carbon sequestration mechanism we have available on the planet."

For Andrew Irving, partner at Irving Smith Architects, the challenges set by the building



1/ OneFortyOne CEO Wendy Norris.



2/ Andrew Irving of Irving Smith Architects.

3/ The new OneFortyOne NZ Forests team Headquarters in Hope, Tasman, NZ. Images: OneFortyOne

were rewarding from the start. "This is the first client in 15 years that's asked us for a timber building with a good carbon outcome," he said.

"Where we're trying to go with this is to find a way to make these buildings carbon zero at the close of

construction. We take all the components we normally make from concrete and steel and we try to find a timber alternate, so at the end of it, we're sequestering more carbon than we're releasing."

The extensive quantities of timber used in the building were grown literally over the hill, then milled locally, so the carbon cost added in transport is minimal. As well as the engineered wood products, other timber-related systems were used in clever ways to both deliver a good result and make the installation easier.

"Timber floors are never usually built this size," said Ben Turnbull of Scott Construction, "but [by using] screw piles we were able to cut down construction time by almost a third in this part of the build."

"This is a better way of building. This is clean, this is green and this is the way we should be moving forward in the future."

For Irving, the building stands as proof of the design concepts behind it. "We've found a way to make these



buildings for the equivalent of other construction types," he said. "This is win-win for the environment and win-win for our local industry; it's a great carbon outcome."

But it also represents something more profound. "No one hugs a steel beam," said Irving, "whereas we do find people touching our timber beams and timber components, so there's a win in that."

Norris agrees, emphasising the way in which the building's carbon-focused approach echoes OneFortyOne's.

"We're a longterm business," Norris said. "We take a tiny little seed and grow it into a tall, powerful tree and then you embody that into the building and the spirit of that is with you as you get to live and work in these buildings. I think it's incredibly powerful."

To see the construction video, click here.

NTHA CAN

TRAIN AND UPSKILL YOUR EXISTING TEAM MEMBERS

- ✓ Nationally recognised qualifications and training
- ✓ Specialist industry trainers

STRENGTHEN YOUR TEAM

RETAIL, SALES, BUSINESS, SUPPLY CHAIN OPERATION AND LEADERSHIP QUALIFICATIONS

(RTO 5343)
1800 822 621
ntha.com.au

Illegal firewood logging in SA

National Parks and plantations have both suffered losses.

MATURE trees including century-old red gums have been illegally felled by people stealing firewood in South Australia's Limestone Coast.

The region, home to some of Australia's best plantation forests as well as multiple National Parks, has seen both small-scale thefts of fallen timbers for personal use and large-scale thefts including the cutting-down of entire trees by organised professionals, some of which may be sold to fund other criminal activity.

The ABC reports that in the face of an uptick in the offence, police, local councils and the Victorian Conservation Regulator (for similar crimes across the border) are now working together to target the illegal taking of firewood from parks and reserves.

The report spoke with National Parks and Wildlife Service Limestone Coast senior ranger Kieran Gosden,



A red gum tree, suspected to be more than 100 years old, was illegally cut down for firewood. Image: courtesy SA Department for Environment and Water

who said the impacts of firewood theft, particularly the felling of red gums, were significant on threatened and endangered species.

"If one of those trees was cut down and taken away, it's going to take 70 to 100 years to even bring that back for the bird that's lost their home," she said.

"In South Australia, those hollow nesting endangered species like the red-tailed black cockatoo rely on those trees, but it goes right down to things like echidnas and small reptiles as well."

Illegal firewood collection

has also increased in Victoria this year, with cost-of-living increases being blamed. Those doing the collection often feel they are not causing real harm as they target dead trees, but these are the exact trees that are likely to contain the hollows that are vital as habitat for birds, reptiles and small mammals, or may be scar

“**ENDANGERED SPECIES LIKE THE RED-TAILED BLACK COCKATOO RELY ON THOSE TREES**”

trees with Indigenous cultural significance.

Authorities recommend that people buying firewood ask for a receipt and provision of the seller's ABN, as dodgy sellers were unlikely to offer either.

In addition to the increased surveillance by authorities, private owners are adding more cameras and patrols, but given the extent of the forests involved, it is not possible to cover all the territory.

One Forty One silviculture manager Adrian Lynch told the ABC that native forest managed by the company had been targeted, including trees that were more than a century old.

He said felling the trees also posed a safety risk for the perpetrators.

"When you see how some of them get cut down it is scary to think how they did it," he said.

"I'm always worried we're going to find someone out in the bush under a tree, and it's not something we want."

To read the full ABC story, click here.

Source: ABC

Unsure how the EUDR may affect you?

Speak with us today.



responsiblewood.org.au

Responsible Wood 

RW/1-10-1

HIA calls for government action

Assistance for private housing as well as social housing is needed.

HIA has amplified calls for the Federal Government to take on more leadership in meeting its goals of building 1.2 million homes across Australia within the next five years.

While the Albanese Government's social housing plans are starting to show results (in conjunction with state governments), private building has not benefited in the same way. High excises and regulatory burdens on private housing construction are driving up costs. Last week's report commissioned by HIA says that up to half of the cost of a new house and land package is government taxes, fees and charges. (Click here for the full report.)

These constraints are adding to burden of higher

housing and rental costs faced by most Australians.

"Social and affordable housing plays a key role in supporting those who are unable to get into home ownership, and we are supportive of boosting its supply across the country," HIA managing director, Jocelyn Martin said.

"However, social and affordable housing only make up a small part of the big picture that is housing in Australia. The majority of the government's target will need to be homes for the private



New Federal Housing Minister Clare O'Neil with NSW Housing Minister Rose Jackson at a recent event. Image: via Clare O'Neil Twitter

market. This is crucial to bring house prices and rentals down."

While rental increases have slowed, costs and growth are still high, adding another difficulty for people wanting

to save to enter the housing market.

"HIA is calling for the newly appointed Minister for Housing, Clare O'Neil, to reset the housing agenda to address the shortfall of supply across the entire housing continuum," said Martin.

"The more new homes we build, the more social housing is freed up for those who really need it, and the more likely it is that ordinary Australians have a chance to buy a house at an affordable price.

"Now is the time to show strong leadership on housing. The Minister and PM must reset the housing policy agenda to focus on increasing housing supply across all areas of housing."

2024 DANA - GINGKO

GLOBAL WOODCHIP AND BIOMASS TRADE CONFERENCE & NETWORKING EVENT

SINGAPORE CONFERENCE 21 - 22 OCT + 2 DAY FIELD TRIP TO GUANGXI, CHINA 24 - 25 OCT

2 day conference at Grand Copthorne Waterfront Hotel, Singapore
26 speakers on several themes:

- The global status of the tree based carbon credit industry
- Global Wood Chip Trade: Regional user and supplier updates
- Details of 160+ dedicated woodchip vessel shipping fleet
- Global Biomass: w/chips, white/black pellets and PKS
- Global pulp-mill status/expansions/future: Market pulp trends
- A 'New Projects, New Products' panel.

Optional 2 day field trip to Guangxi, China
Visits to:

- Eucalyptus nursery/plantations/harvesting
- Wood panel plants
- Pulp mill
- Wood import port

GINGKO
CONSULTING

FOR WEBSITE
CLICK HERE
OR TO CONTACT ORGANISER
CLICK HERE

AUGUST

27: Forestry Australia Webinar - Forestry comms: Communicating complexity effectively – ONLINE EVENT, 12.30am-1.30pm (AEST). For more details and to register, visit <https://www.forestry.org.au/webinar-forestry-comms-communicating-complexity-effectively/>

SEPTEMBER

4: Forestry Australia Field Trip – South Burnett, QLD. Learn about the growing production of hardwood plantations at a farm forestry scale and more. For more information and to register, visit: <https://www.forestry.org.au/qld-events/>

7: WFTN 'Cocktails for Charity' event, 2.00 - 6.00pm – Loft West End, Brisbane. Join us for an afternoon of cocktails and charity to support RizeUp, an organisation dedicated to providing life-changing practical assistance to families affected by domestic and family violence. To purchase tickets and for more information, visit: <https://www.ntha.com.au/eventdetails/25321/wftn-cocktails-for-charity>.

13: NTHA NSW/ACT State Awards – Hilton, Sydney. Join us in celebrating the New South Wales & ACT Timber and Hardware Industry. Nominations open at <https://www.ntha.com.au/events/2024-nswact-state-awards-nominations/> Contact Tahlia at events@ntha.com.au

23: Latin America Forest Investment Conference – Porto Alegre, Brazil. 24-25: **International Woodchip and Biomass Trade Conference – Porto Alegre, Brazil.** 25-27: **Field Trip – Rio Grande do Sul State, Brazil.**

28-31: Forestry Australia 2024 Symposium – Mercure Ballarat Convention Centre, Golden Point, VIC. Theme: Healthy and resilient forests for our future, will facilitate conversation and collaboration that regardless

of land tenure and ownership, healthy and resilient forests should be the objective for all forest and land managers. The Symposium is a focused three-day gathering, consisting of two days of plenary and concurrent sessions, and a day of Field Trips. The two-day program will feature a range of Keynote and Invited Speakers, who are experts and thought leaders in their field. The Symposium will also feature several social functions, facilitating networking and collaboration in an informal and relaxed environment. For more information, visit <https://www.forestry.org.au/2024-symposium/>

NOVEMBER

OCTOBER

22-23: International Woodchip and Biomass Seminar and Networking Event – Singapore.

29-31: Forestry Australia 2024 Symposium – Mercure Ballarat Convention Centre, Golden Point, VIC. Theme: Healthy and resilient forests for our future, will facilitate conversation and collaboration that regardless

of land tenure and ownership, healthy and resilient forests should be the objective for all forest and land managers. The Symposium is a focused three-day gathering, consisting of two days of plenary and concurrent sessions, and a day of Field Trips. The two-day program will feature a range of Keynote and Invited Speakers, who are experts and thought leaders in their field. The Symposium will also feature several social functions, facilitating networking and collaboration in an informal and relaxed environment. For more information, visit <https://www.forestry.org.au/2024-symposium/>

NOVEMBER

13-15: AFCA annual Gala dinner & conference – Launceston, Tas. For more information visit: <https://www.afca.asn.au/Events/afca-2023-conference-photo-gallery>

SAVE THE DATES 2025

MARCH 22: NTHA SA/NT/WA State Awards – National Wine Centre, Adelaide. Join us in

celebrating the SA, NT & WA Timber and Hardware Industry. Contact Tahlia at events@ntha.com.au

MAY 30: NTHA QLD State Awards – Brisbane City Hall, Brisbane. Join us in celebrating the QLD Timber and Hardware Industry. Contact Tahlia at events@ntha.com.au

MARCH 25-28: DANA Global Wood Products Supply and Demand Trends Seminar, Global Forest Investment Conference, and WWII Battle of the Bulge Battle sites tour – Europe. Contact admin@dana.co.nz

JUNE 22-26: World Conference on Timber Engineering – Brisbane. WCTE is the world's leading scientific forum for the presentation of the latest technical and architectural solutions and innovations in timber construction.

OCTOBER 20-22: International Woodchip and Biomass Seminar and Networking Event – Singapore.

OCTOBER 23-24: Field Trip – Vietnam.



Are you following us on social media?

Please like and share our page so we can get the timber and forestry message out to a bigger audience. If you like our publication, please leave us a review.



A CUT ABOVE...



Our scope of supply:

- Mobile and stationary chainsaws
- Timber crosscut stations
- Log cutting stations
- Circular saws

- Mechanisation
- Sorting lines
- Scanning and optimising systems
- Special systems

Do you crosscut timber packs at ± 1 mm accuracy?

Or cut structural timber, panel products (MDF & LVL), paper rolls?

Or produce pallet dimensions or studs on fixed lengths?

HOLTEC has a solution for you!

For more information contact:

HOLTEC
YOUR PARTNER FOR THE PERFECT CUT

Ph: +64 9 416 8294 // Fax: +64 9 416 8296
Email: sales@holtec.org // Web: www.holtec.org





Stop the hack!
 A cyber attack could cost your timber business
\$46,000



Protect your data with free and simple cyber security training. It only takes 2 minutes to enrol.




Act now

cyberwardens.com.au



have partnered with
 COBBARA
 SMALL BUSINESS ORGANISATIONS AUSTRALIA

to bring the timber industry
 CyberWardens.

Forestry comms webinar



Dr Sam Lloyd (left) and David Bruce will be teaching forestry professionals how to communicate complex science more effectively in this webinar.

Photos: Forestry Australia

FORESTRY Australia's upcoming webinar, 'Forestry comms: Communicating complexity effectively' is another plank in the building of social license being done by the organisation. Faced with the media-friendly messaging of some lobbyists, the good news story of the sustainable Australian forestry sector and the homes and more made from its products doesn't always cut through.

It's not just the what, but the how, of communications that really makes a difference. The way we share, engage and inform is key to being understood and building social license – and has never been more important in the forestry sector as we seek to communicate science, research and operational complexity in an age of heightened discourse.

To help change that story, Forestry Australia presents this webinar for all forestry professionals and forest growers. It's designed to equip attendees to think differently, broadly and strategically in the ways they engage with their respective audiences, both

inside and outside forestry.

Join David Bruce (communications director at Natural Hazards Research Australia) and Dr Sam Lloyd (QLD Fire and Biodiversity Consortium) for expert principles and personal case studies highlighting ways to communicate complex science in order to effectively engage with stakeholders and our community at large.

Both have solid backgrounds as tested communicators at multiple levels of audience expertise and a comprehensive toolbox of strategies that any forester can make use of in improving the ways they talk to their audiences.

The webinar will be held on Tuesday 27 August from 12.30–1.30 pm (AEST). Costs are member: \$10; non-member: \$60; and student member: free and attendance is worth 1.0 CPD points. Everyone who registers will receive a copy of the webinar recording and slides, so you can listen later if the time doesn't work.

For more information, click [here](#).

Temporary Forestry Australia change

Dr Michelle Freeman is taking parental leave and Dr Bill Jackson will be acting president for the next 12 months.

FORESTRY Australia president Dr Michelle Freeman has taken 12 months' parental leave and the role of FA's acting president will be filled by highly respected forest scientist Dr Bill Jackson for the next year.

Jackson was chief author for the Australia State of the Environment Report 2016, and has previously held roles as chief executive of Parks Victoria, Director of National Parks and Deputy Director General of the International Union for Conservation of Nature (IUCN), in addition to being a Forestry Australia Fellow. He is an adjunct Professor with the Tropical Forest and People Research Centre of the University of



1/ **Dr Michelle Freeman has taken a 12-month leave from Forestry Australia on parental leave.**

2/ **Dr Bill Jackson is filling the role for the next year.** Photos: Forestry Australia

the Sunshine Coast and an independent environmental consultant.

Jackson will continue to build on Forestry Australia's momentum and



Freeman's achievements through maintaining a strong commitment to the profession, developing Forestry Australia's advocacy positions and working to

attract a broader membership base.

His background in community forestry and conservation positions him well to continue the public conversation Freeman has begun on the role of foresters and the wood products sector as conservation partners, pushing back against the demonisation of the industry by some lobbyists.

Forestry Australia said "We wish Michelle all the very best as she starts 12 months parental leave to focus on her growing family and welcome Bill. We're very privileged to have such extraordinary people leading our association."

Renewable. Sustainable. Reliable.

P: 07 3147 8790
E. sales@vidawood.com

Master Builders releases its first report on sustainability goals

The report documents the progress made towards meeting the *Building and Construction Industry Sustainability Goals 2050*.

MASTER Builders Australia last week released its first annual report on the progress toward its Building and Construction Industry Sustainability Goals 2050.

This report marks an important milestone in the industry's progress toward building a sustainable and resilient future.

These goals seek to identify measures that are likely to affect business performance and develop actions to minimise the risks and/or maximise the opportunities of those material issues through an ESG governance framework.

Each of the eight 2050 goals have a 2030 ambition and a first three-year plan.

"While there is huge demand for building and construction work, including the commitment of governments to build 1.2 million homes over the next five years, the industry has been battling significant headwinds," said Master Builders CEO Denita Wawn.

"Over the last year the industry has grappled with high inflation, chronic labour shortages, higher than anticipated interest rates, compounding changes to industrial relations laws, and new building regulations.

"These challenges have seen a reduction in private investment, an ongoing decline in productivity and higher than average insolvencies.

"Mindful of the practicalities of what is happening in the

OUR 2050 GOALS

In July 2023, Master Builders Australia (Master Builders) committed to developing policies, partnerships, and strategies to future-proof the building and construction industry. This commitment is made through a sustainable change management plan, which embeds an Environmental, Social and Governance (ESG) framework to underpin the Sustainability Goals for 2050.



Environment

Net zero built environment

Buildings built to enable net zero emissions.

Resilient built environment

Building laws, standards, and performance are at an appropriate level to meet the health and wellbeing needs of our future population and contribute to better building outcomes.

Circular economy

The building and construction industry minimises its environmental footprint by reducing its quantum of waste, adopting best practice recycling programs, and minimising its water usage.



Social

Fair and safe workplace conditions

To achieve a sustained and ongoing reduction in fatalities and injuries within the building and construction industry.

Equality, diversity and inclusion

That the building and construction workforce reflects the Australian population.

Mental health

To ensure the building and construction industry is known as a sector that fosters and supports positive workplace mental health and has eliminated (or substantially reduced) the incidence of suicide amongst industry participants.



Governance

Business conduct

The structures, frameworks and relationships in the industry supply chain reflect a profitable and sustainable outcome for all.

Community engagement

That the industry has developed and implemented best practice standards in community engagement.

Master Builders' 2050 Goals. Image: HIA website

industry, Master Builders is moving at a realistic pace, leading transformation for the long-term benefit of the industry and Australia's built environment."

The report makes it clear that this has been a difficult period for Australian builders, with productivity within the industry declining 18% over the past 10 years. Despite facing a reduction in private investment in building and construction and higher than average insolvencies in the industry, Master Builders is still forging ahead with the Sustainability Goals as the end results make the current effort comprehensively worthwhile.

Key measures include:

- Working with Government and the building supply chain on changes to support the goal for a net zero built

- environment.
- Participating in reforms to building regulation on priority building resilience issues such as waterproofing and bushfires.
- Increasing female participation with ongoing work of the Women Building Australia program and advocacy to Government for greater support.
- Partnering with a tech platform to provide much needed digital contract management and payment tools.

“AIDING THE GOVERNMENT INNOVATION AGENDA ON PREFABRICATED AND MODULAR BUILDINGS

- Working with the Office of the Federal Safety Commission to promote better safety outcomes on building sites.

Significant achievements over the past 12 months include Master Builders Queensland leading the formation of the Building Products Coalition and a related industry advocacy agenda on consistent product information and digital traceability tools that will be necessary for future discussions on embedded carbon; participation in the Government innovation agenda on prefabricated and modular buildings that will encompass a move to net zero outcomes; greater focus on energy efficiency in all building and construction awards as

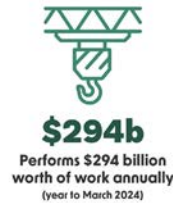
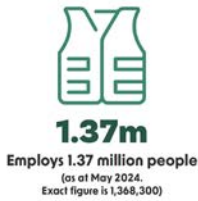
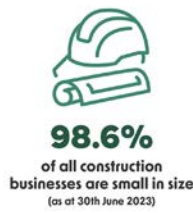
Cont P 11

From P 10

STRONG BUILDING = A STRONG ECONOMY

opposed to just being reflected in specific awards; and working with Building 4.0 CRC, in partnership with Master Builders Victoria, and other stakeholders in developing a scoping study on Building the Future and a Shared Interests Project to plan necessary steps and actions for a transition to a circular economy.

The program's social goals have also progressed. Master Builders has focused on working with the Office of the Federal Safety Commissioner in identifying high risks and supporting the Office in its education efforts. In addition, Master Builders is consulting with the Office on



A snapshot of the sector in 2024. Image: HIA website

its work regarding a scheme framework for residential builders receiving funding from the Housing Australia Future Fund.

On a more specific but highly significant level, Master Builders played a central role in the development of practical elements underpinning laws prohibiting the installation,

use and modification of engineered stone benchtops, and promoted information about these new obligations throughout the industry.

On International Women's Day, Master Builders launched a report, Breaking Ground: Women in building and construction, that identifies the challenges women face in the industry. It presents

practical solutions and ignites meaningful discussion on how to increase female participation in the industry.

Additionally, Master Builders member associations continued their close association with industry-specific mental health service providers in their States and Territories throughout the year as well as making policy submissions on a range of initiatives that will help protect worker mental health and safety.

Finally, Master Builders has worked to ensure that broader governance issues within the building sector improved, whether those be technological advancements, improved payments to subcontractors, advice on risk allocation and lending or wider community engagement and housing advocacy programs.

To read the full report. Click here.

arxada

IS IT SAFE TO USE PRESERVATIVE - TREATED WOOD FOR MY RAISED GARDEN BED?

Yes!

TANALITH® E Copper Azole treated timber is safe to use around fruit and vegetables!



Tanalised, Tanalith, & Ecowood are registered trademarks of Arxada @ 2023

FSC Launches EUDR Tutorial Series

A range of tools and educational materials will help FSC certificate holders comply with the EUDR.

FSC ANZ is pleased to announce a new tutorial series to help users effectively utilise FSC's Risk Assessment Template. This resource is crucial for FSC-certified companies that source controlled material as they await the development of FSC's National Risk Assessments for Australia and New Zealand.

The EU Regulation on Deforestation-Free Products (EUDR) and the FSC mission complement each other in addressing global deforestation and environmental degradation. This includes publication of the FSC Regulatory Module and Risk Assessment Framework, which, along with a range of system-wide updates, ensures that the FSC certification system is aligned with the EUDR, hereby lowering the compliance burden for certificate holders.

FSC Risk Assessments are essential tools that evaluate the risk of sourcing materials from various supply areas. They also establish mitigation measures to address identified risks, covering key requirements such as High Conservation Values, human and labour rights, and environmental protection.



EUDR is designed to reduce deforestation. FSC's member guidance will simplify compliance. Image: FSC

After a comprehensive and balanced revision, the FSC-PRO-60-006b FSC Risk Assessment Framework (click here to view) has been published and is now effective. This updated framework, which aligns with EUDR regulations, provides a robust tool for companies to assess and mitigate sourcing risks. It features 64 indicators that cover relevant social and environmental aspects, ensuring responsible sourcing practices.

The tutorial series offers a detailed, step-by-step guide on how to use the Risk Assessment Template. It includes the following modules (click on each bold heading to be taken to the tutorial videos):

- **Overview of the Template:** Understand what is included

in FSC's Risk Assessment Template and how it works.

- **Reference Tabs:** Learn how to enter background evidence supporting the risk assessment, such as publications, expert consultations, and relevant documents.
- **Country Overview and Supply Chain Tabs:** Gain insights by providing background information, specifying the scope and contextual details of the region or country being assessed.
- **Geopolitical Scale and Source Types:** Understand how to input information on geopolitical scale and source types into the template.
- **Risk Assessment Sources:** Learn how to insert the commodity for which risk is being assessed, such as a

specific forested area distinguished by various characteristics.

- **Assessing and Mitigating Risk:** Discover how information is compiled within the template to assess and mitigate risk effectively.

All tutorial videos and supporting documents are available on the dedicated webpage on FSC Connect, the portal that provides access to various FSC tools, content, and data.

Click here to visit. The series aims to guide users through each aspect of the Risk Assessment Template, ensuring they can effectively implement it in their risk management processes.

Further tutorials covering other parts of FSC's response to the EUDR are expected to be launched soon.

For more information and to access the resources, visit the FSC Connect platform and find the content, videos, and scripts for translation in the dedicated folder.

Download the FSC Risk Assessment Framework in the Document Centre by clicking here.

For more, email FSC ANZ at info@au.fsc.org or visit the FSC ANZ website: <https://anz.fsc.org/>



A leader in sustainable forestry with a common goal: protect healthy, resilient forests for all, forever.
Visit us at [fsc.org](https://www.fsc.org)

Komatsu

Xtreme Excavators



Komatsu PC270HW
Attachment Carrier



Komatsu PC270HW
Attachment Carrier



Komatsu PC270LL
Log Loader



Komatsu PC300HD
Attachment Carrier



Komatsu PC300FX
Attachment Carrier



Komatsu PC300LL
Log Loader



Komatsu PC300TL
Tractionline



Komatsu PC400HL
Harvestline

The Komatsu Xtreme models have been developed by collaboration between Komatsu Forest & Komatsu Osaka Factory to meet our tough forest conditions.

KOMATSU
Creating value together

Komatsu Forest Pty Ltd
11/4 Avenue of Americas
Newington NSW 2127 Australia
T: +61 2 9647 3600
E: info.au@komatsuforest.com

Call for nominations

FSC ANZ seeks replacement candidate for Standards Development Group.

TIM McBride has resigned from his role at Forest Stewardship Council Australia and New Zealand (FSC ANZ) representing the economic chamber on the Standards Development Group (SDG). FSC ANZ made the announcement, saying, "Tim, a highly valued SDG member from HVP, has made significant contributions, and we extend our gratitude for his dedicated work. We wish Tim all the best in his future endeavours."

As a result, a new candidate is being sought. Expressions of interest close on 3 September 2024 whereafter the FSC ANZ Board will consider applications and appoint the successful candidate.

The Standards Development

Group was formed to support the revision of the 2018 Australian National Forest Stewardship Standard (NFSS), which defined what responsible forestry looks like in Australia. Regular revisions are required to ensure that the document remains fit for purpose and the SDG members were chosen for their experience and ability to represent key interest areas that are important for the revision and FSC's values and policies.

Eligibility for the position is subject to a lengthy set of selection criteria that include



The Standards revision ensures they remain fit for purpose.
Image: FSC ANZ

membership of FSC ANZ; up-to-date knowledge of FSC's systems and procedures; an understanding of the impact of the standard on affected stakeholders; and the ability to represent points of view from the economic chamber, ideally with experience, a skill set, and input from the native forestry sector.

Nominations must include two letters of support from members of the corresponding chamber.

See the full set of selection criteria by clicking here and for more information on the Standards Development

Group and the process for appointment, contact Stefan Jensen, FSC ANZ's Senior Policy Manager at s.jensen@au.fsc.org

More information on becoming an FSC ANZ member can be found here or read more about the revision here.

Job position to fill?

For as little as A\$10.00 per week, you can advertise your positions vacant on our dedicated eNews jobs web page.

Job ad: A\$30.00 for 3 weeks

Prices exclude GST.

[CLICK TO ADVERTISE](#)

timber
& FORESTRY *e*news

Contact Campbell McInnes at campbellm@timberandforestrynews.com



Midwood discovered

The lovely tulip tree turns out to be neither softwood nor hardwood but something new with exciting potential.

Liriodendron spp. have long been popular garden plants for their tall, fast-growing, well-shaped form, lovely autumn colour and large lime and orange flowers in spring that give the common name of tulip tree. An ancient tree, related to the magnolia, it has become popular in East Asia recently as a carbon-farming tree as it has a superior reputation for locking up carbon. And researchers may have just discovered why.

Scientists from the Sainsbury Laboratory at Cambridge University and Jagiellonian University, Poland made the discovery while undertaking an evolutionary survey of the microscopic structure of wood from some of the world's most iconic trees and shrubs.

Fresh samples of current-year wood were collected from 26 tree species in the Cambridge University Botanic Garden as part of a study on how wood ultrastructure evolved across softwoods and hardwoods, recently published in *New Phytologist*.

The material was frozen in slush N₂, then cryo-fractured, sputter coated with a measured 3nm platinum layer and then imaged at high

magnification on a cryoSEM (Zeiss EVO equipped with Quorum PP3010 cryo system).

Each image showed the wood ultrastructure of vessels/tracheids including individual cellulose macrofibrils, which had their thickness measured.

The aim of the study was to reflect the evolutionary history of gymnosperm (softwood) and angiosperm (hardwood) populations as they diverged and evolved.

Microscopy Core Facility Manager at the Sainsbury Laboratory, Dr Raymond Wightman, said: "We analysed some of the world's most iconic trees like the Coast Redwood, Wollemi Pine and so-called 'living fossils' such as *Amborella trichopoda*, which is the sole surviving species of a family of plants that was the earliest still existing group to evolve separately from all other flowering plants.

"Our survey data has given us new insights into the evolutionary relationships between wood nanostructure and the cell wall composition, which differs across the lineages of angiosperm and gymnosperm plants. Angiosperm cell walls possess characteristic narrower



The tulip tree is native to North America (*Liriodendron tulipifera*) and China and Vietnam (*L. chinense*).
Image: Jean-Pol Grandmont (CC)

elementary units, called macrofibrils, compared to gymnosperms."

Hardwood angiosperm macrofibrils are about 15 nanometres in diameter and faster growing softwood gymnosperm macrofibrils have larger 25nm or more macrofibrils.

But the *Liriodendrons* didn't fit neatly into either group. Tulip Trees have macrofibrils somewhere in between, measuring around 20-22nm. They were 'midwood'.

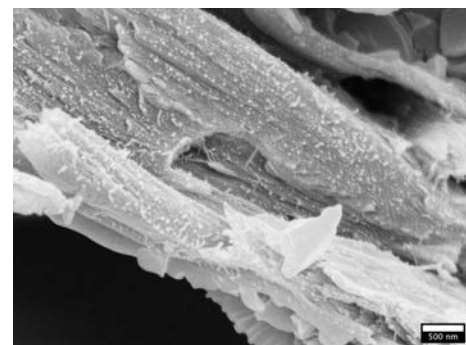
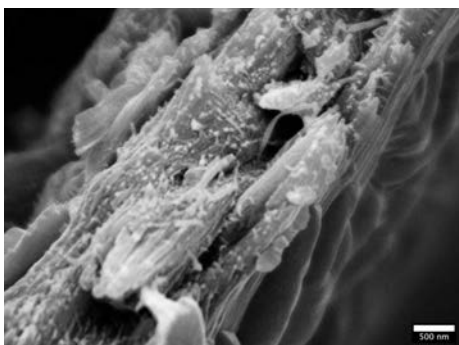
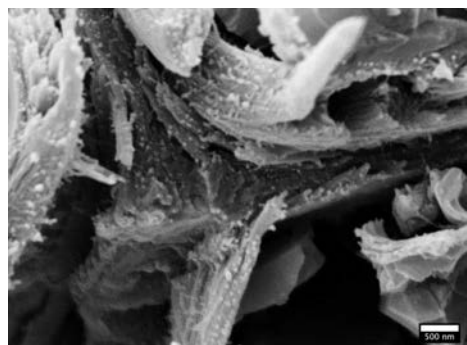
Lead author of the research, Dr Jan Łyczakowski from Jagiellonian University,

said: "*Liriodendrons* have an intermediate macrofibril structure that is significantly different from the structure of either softwood or hardwood. *Liriodendrons* diverged from magnolia trees around 30-50 million years ago, which coincided with a rapid reduction in atmospheric CO₂. This might help explain why tulip trees are highly effective at carbon storage.

"Both *Liriodendron* species are known to be exceptionally efficient at locking in carbon, and their enlarged macrofibril structure could be an adaptation to help them more readily capture and store larger quantities of carbon when the availability of atmospheric carbon was being reduced."

More research is being carried out to see if these midwood characteristics can be bred or bio-engineered into other trees, after which the carbon sequestration rate will be checked. It may be possible for midwood to play an important role in boosting the carbon storage capacity of future plantations.

Click here for the full story from the University of Cambridge and click here for the paper in *New Phytologist*.



All analysed softwoods, like *Pinus sylvestris* (left) have larger macrofibrils (average 27.9nm) than the studied hardwoods like this *Magnolia acuminata* (right, average 16.6nm). In the middle sits the tulip trees (here *Liriodendron tulipifera*, average 22.4nm). Images: courtesy Uniwersytet Jagiellonski w Krakowie Wydział Biochemii Biofizyki i Biotechnologii and University of Cambridge Sainsbury Laboratory

TQ Growth Scholarships

Timber Queensland has announced the recipients of its 2024-2025 Growth Scholarships.

TIMBER Queensland's Strategic Relations Manager Clarissa Brandt said there was a commonality in this year's scholarship applications – passion for the industry.

"Passion and persistence are integral in growing a satisfying career," she said.

"This year's winners include a person that has been persistent, it hasn't been the first time they've applied, so we strongly encourage those who may have missed out in this round to revisit their application and participate in the application development workshops that we are planning to host in early 2025."

Brandt said the judging committees were impressed by the range of applications received from every part of the industry supply chain.

"We receive applications from people in academia to those working on the tools. Our judges have to carefully choose recipients that demonstrate a strong sense of purpose, are focused on their career development and have designed a learning activity that will be beneficial individually and for Queensland's forest and timber industry," said Brandt.

"Similarly, the ongoing support and commitment of our Foundation partner Kennedy's Timber, Diamond partners AKD and HQPlantations and our Ruby partner DTM Timber means that interest in the Growth Scholarship is expanding.

"We would like to thank all our partners for their gracious support, as well as the industry stakeholders who assisted with the selection process."

The recipients of the 2024-2025 Awards are:

\$10,000 KENNEDY'S TIMBER AWARD

Trinh Huynh

Learning Activity "Silvopasture study tour in the Southeast Climate Hub in the US"

Trinh Huynh is a postdoctoral Research Fellow at the Forest Research Institute, University of the Sunshine Coast. Huynh has planned a learning activity that will create strong bonds between Queensland and the United States Department of Agriculture (USDA) – Southeast Climate Hub's forestry researchers facilitating knowledge exchange and collaboration.

The activity includes a busy program of webinar presentations, field visits and knowledge acquisition that will both assist her career trajectory and make a significant contribution to the development of silvopastoral practices in Queensland.

"Silvopastoral systems integrate trees, pasture and livestock, providing environmental and economic benefits," said Huynh.

"The aim of my learning activity is to acquire practical knowledge and first-hand experience to enhance the



1/ **Dr Trinh Huynh, winner of the \$10,000 Kennedy's Timber Award.**

2/ **Matt Kavanagh will use his \$5000 HQPlantations Award to trial machinery in Finland.**

Images: Timber Queensland

techniques, integration practices and management strategies of silvopastoral systems.

"By comparing the US government's support for graziers in drought-prone areas with Queensland's policies, I hope to understand which government initiatives are most effective in supporting silvopasture adoption and resilience," she said.

\$5000 HQPLANTATIONS AWARD

Matt Kavanagh

Learning Activity "Growing Mechanisation Planting Study Tour"

Judges were impressed with the hands-on nature of HQPlantations Award recipient Matt Kavanagh's application. Matt is a contractor that has been undertaking mechanical planting trials with support from Risutec and Randalls equipment.

"Working in our industry is just so enjoyable, there is always something different with new challenges," said Kavanagh.

"Mechanical planting has been another great experience but I believe there is a lot more to learn to make it cost effective and provide efficiencies across the different types of plantations we have in Queensland."

Kavanagh's learning activity will see him travel to Finland to visit Risutec to view the forwarder-based planting machine currently being

development of silvopasture in Queensland, drawing on practices from the South East Climate Hub in the United States."

During field visits to North Carolina, Florida and Texas, Huynh will observe diverse silvopastoral models, ranging from intensive pasture systems to tree plantations. These visits will provide a deep understanding of silviculture

From P 16

developed and trialed called the 'Forest Maker'.

"This machine is designed to scarify, plant, fertilise and map seedling locations in one action while having a higher seedlings per hour productivity over an excavator," Kavanagh said.

"I'm excited that I will be able to see how the forest maker machine works and how it may be adapted to operate in Queensland's southern pine plantations.

"There are many challenges for mechanical planting such as harvest residue, already formed mounds that must be replanted or ploughed, stumps from previous crop and varying soil types that are very susceptible to seasonal conditions, which puts an emphasis on getting the planting quality right."

\$5000 AKD AWARD

Bianca Andreis da Cunha

Learning Activity "Forestry's Future: Women's Protagonism in leading Sustainable change – Yale School of Management Executive Education's online Women's Leadership Program"

Attracting more women to work in Queensland's male-dominated forest and timber industry is an associated benefit of the learning activity to be undertaken by Andreis da Cunha who works as



1



2

1/ Bianca Andreis da Cunha hopes the work she achieves with her \$5000 AKD Award will encourage more women into forestry.

2/ The funding from the \$2500 DTM Timber Award will help Kristiina Marquardt to obtain a Remote Pilot Licence. Images: Timber Queensland

planning and development lead forester at HQPlantations and has a lifelong commitment to environmental stewardship and sustainable development.

"My learning activity aims to leverage the insights and training from the Yale School of Management Executive Education's online Women's Leadership Program, providing me with the tools to address the underrepresentation of women in leadership roles and the substantial benefits of diversity and inclusivity in management," said Andreis da Cunha.

"By completing this leadership program, I will

enhance my professional potential and help include and develop more women to work in forestry. This transformation will not only improve business outcomes but also enrich the organisational culture and challenge the existing gender biases in the sector, setting new benchmarks for environmental and community engagement standards."

\$2500 DTM TIMBER AWARD

Kristiina Marquardt

Learning Activity "Training to obtain a Remote Pilot Licence (RePL) – Multirotor 25kg"

Having recently completed a Master's Degree in Forest and Nature Management and now working at ecological engineering firm Verterra, Marquardt aspires to become an expert in working with different stakeholders to find ways to restore, conserve and sustainably manage forest for multiple objectives.

Marquardt applied for the DTM Timber Award and will undertake a Remote Pilot Licence Multirotor 25kgs course to obtain an initial Remote Pilot Licence.

"Through this training course, I will gain both theoretical and legal knowledge and practical competencies in operating multirotor remotely piloted aircraft applicable to forest management and I will gain the licence to operate the appropriate drones," said Marquardt.

Increasing her skill set will be of benefit to Marquardt as her career progresses and she expands her interest in the science of forest restoration and reforestation, and how different ecological and socio-economic factors can affect the success of a project.

For more on the Timber Queensland Growth Scholarships, click here.



Timber Media
AUSTRALASIA

Timber & Forestry enews an authoritative and rapid deliverer of news and special features to the timber and forest-based industries in Australia, New Zealand and internationally. *Enews* is delivered weekly, every Thursday, 48 weeks of the year. Advertising rates are competitive with other industry publications. *Timber & Forestry Enews* hits your target market – every week, every Thursday!

HEAD OFFICE

Timber Media Australasia Pty Ltd
PO Box 3001
Maraylya NSW 2765

PUBLISHER

Timber Media Australasia Pty Ltd

EDITORS

Nicky Ainley
Donyale Harrison
Jess Hockridge
editors@timberandforestryenews.com

ADVERTISING

Campbell McInnes // +61 (0) 406 223 007
campbellm@timberandforestryenews.com

ACCOUNTS

Chris Parker // +61 (0) 413 710 203
cparker@ttnews.com.au

SUBSCRIBE

www.timberandforestryenews.com



The information contained in this publication has been obtained from sources assumed to be reliable. However, the publishers disclaim all warranties as to the accuracy, completeness, reliability or adequacy of the information displayed. Opinions expressed in *Timber & Forestry enews* are not necessarily those of directors or the *Timber & Forestry enews* team. We do not accept responsibility for any damage resulting from inaccuracies in editorial or advertising. The publishers are therefore indemnified against all actions, suits, claims or damages resulting from content in this publication.

CLASSIFIED ADVERTISING

EMPLOYMENT

ADVERTISING PACKAGES

PRODUCTS & SERVICES

LATEST JOBS:

Click this link
to advertise
online...

PACKAGES:

Click this link
to learn about
advertising
packages...

BUY AND SELL -

New and Used
Machinery/Equipment

Click this link
to advertise
here & online...

ADVERTISING RATES

DISPLAY AD RATES

FULL PAGE: \$540

297mmH x 210 mmW

HALF PAGE: \$320

Vertical • 256mmH x 93mmW
Horizontal • 125mmH x 190mmW

THIRD PAGE: \$240

Horizontal • 73mmH x 190mmW

QUARTER PAGE: \$210

Vertical • 125mmH x 93mmW
Horizontal • 63mmH x 190mmW

BANNER ADVERTISING PACKAGES

• PREMIUM PACKAGE:

FRONT PAGE publication module, email and website modules

- Front page module • 68mmW x 45mmH
- Top email banner • 1200pxW x 145pxH
- Home page website banner • 1000pxW x 120pxH

• STANDARD PACKAGE:

PAGE 6 (or similar) module, email newsletter and website module

- Module • 93mmW x 63mmW
- Email module • 336pxW x 336pxH
- Website module • 720pxW x 744pxH

CLASSIFIED ADVERTISING

JOB / BUY & SELL ADS: ONLINE & IN PUBLICATION

720pxW x 744pxH

TERM DISCOUNTS

12 WEEKS: 7.5%

24 WEEKS: 10%

48 WEEKS: 15%

All pricing is excluding GST and based on a weekly booking. Overseas bookings are exempt from GST.

DEADLINES

Display ads: Book by 9.00am Tuesday prior to publication.

Supplied artwork: 12noon Tuesday prior to publication.

Supply hi-res jpg or pdf to our specifications. This is a digital publication, therefore **NO crop marks or bleed is required.**

Classified advertising: JOB ADS ARE COMPLETED ONLINE.

Go to www.timberandforestrynews.com/post-a-job/ to place a job vacancy. **Book by 12noon Tuesday prior to publication.** Job ads are for individual positions. If more than one position is to be advertised, separate ads will need to be created and advertised accordingly.

BUY & SELL ADS ARE COMPLETED ONLINE. Go to www.timberandforestrynews.com/product/buy-sell-advertisement/ to place an ad. **Book by 12noon Tuesday prior to publication.**

PAYMENT TERMS

New clients invoiced on booking. Existing clients 14 days. All other standard Terms & Conditions apply.

CONTACTS

Media releases and editorial:

Nicky Ainley // Donyale Harrison // Jessica Hockridge
e: editors@timberandforestrynews.com

Display ad bookings:

Campbell McInnes // e: campbellm@timberandforestrynews.com

Accounts:

Chris Parker // e: cparker@ttnews.com.au

Have some news to share?

Send media releases, news stories, events, any timber and forestry news related information with us anytime to Nicky, Donyale and Jess -

editors@timberandforestrynews.com

timber
& FORESTRY *e*NEWS

Contact Nicky,
Donyale or Jess today...