

DELIVERED  
WEEKLY TO  
**15,200**  
GLOBAL  
READERS\*

Like and  
follow us on



ISSUE 819 // September 5 2024

# timber & FORESTRY *e*news

ACCESS  
BUSINESS  
GRANTS  
P 12



## “Making a mockery”: QLD Government’s glider habitat met with mixed feelings

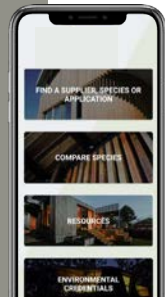
COVER STORY P 5

Do you  
have  
a job  
position  
to fill?

ADVERTISE TODAY



timber  
& FORESTRY *e*news



Wood  
Solutions

### BOOST YOUR CUSTOMER BASE

CREATE A FREE SUPPLIER LISTING ON  
THE WOODSOLUTIONS WEBSITE

GET STARTED

Responsible  
Wood RAW 130-1

Speak to us about  
EUDR implications.

[Click here.](#)

## ALL UNDER ONE ROOF

- ◆ IR SUPPORT
- ◆ TRAINING
- ◆ EMPLOYMENT
- ◆ WHS
- ◆ COMMUNITY



**NTHA**  
NATIONAL TIMBER &  
HARDWARE ASSOCIATION

1800 822 621

# Spring off to a blustery start with warmer temps expected

DAMAGING wind have brought trees and powerlines down while sending roof tiles and trampolines flying as multiple states dealt with wild weather in the past few days.

The NSW SES responded to more than 1500 incidents in one night on August 31 however winds intensified in both Victoria and NSW the days following.

A strong cold front approached the south-west coast of Victoria moved across the state into NSW bringing damaging winds and a drop in temperatures.

Winds averaging 80 to 90 km/h with peak gusts in excess of 125 km/h were recorded with Chief Inspector Whitelaw said NSW SES crews were on standby to provide assistance.

“Our volunteers have been working around the clock since Wednesday, and they have done a tremendous job,” he said.

**“EXTREME WEATHER COULD BE EXPERIENCED**

According to the Bureau of Meteorology, more extreme weather conditions could be experienced across Spring.

“The long-range forecast provides guidance on the likelihood that different parts of the country will see conditions that are warmer or cooler, or wetter and drier than average over the next 3 months,” the Bureau shared in a statement.

“The Spring Long-Range Forecast shows an increased likelihood of warmer than average temperatures across all states and territories this spring.”

“Rainfall forecasts are more mixed, with an increased likelihood of above average for large parts of eastern Australia, and more likely



**The first front of spring has brought damaging winds to parts of VIC and NSW with the SES called out to thousands of jobs.** Image: NSW SES

below average rainfall for large parts of Western Australia.”

Most of New South Wales and the Australian Capital Territory have increased chances of warmer-than-usual spring temperatures.

Parts of eastern NSW, including around Sydney, are likely to see temperatures in

the typical range for spring.

Most of NSW and the ACT have increased chances of above average spring rainfall.

Victoria has an increased chance of warmer than usual spring temperatures.

Most of Queensland is likely to have above average rainfall, especially southern and central areas.

Northern Australia's official wet season begins in October.

According to the Bureau, despite some typically cool winter temperatures at times on the east coast, winter has been warmer than usual across the country with August on track to be Australia's warmest August on record.

While winter rainfall has been close to average for many areas, parts of Australia's south-east have been drier than usual.

Overall, Australia's mean temperature will be around 1.5 °C above the 1961–1990 winter average.



## Preserve the Future, Preserve Timber





**Choose a timber preservative that is suitable for use in all of your project applications.**

- Vegetable Gardens
- Decking
- Garden Retaining Walls
- Playground Equipment
- Landscaping in Schools

[www.kopperspc.com.au](http://www.kopperspc.com.au)  
1800 088 809

# “A mockery of new timber policy”: Qld government’s Glider Habitat questioned

THE Queensland Government has announced that 54,000 hectares of greater glider habitat in South East Queensland state forest will be transitioned to a new natural capital tenure, with it the establishment of a Greater Glider Forest however, industry experts have met the announcement with hesitation.

Of the 54,000 hectares, 7,500 hectares are set to be placed into Natural Capital Reserve as a potential strategic advance offset for the critical Borumba Pumped Hydro project. The Government says it is one of the first steps towards protecting our unique biodiversity while supporting a strong and sustainable forest and timber industry. The action follows the launch of the Queensland Sustainable Timber Industry Framework terms of reference in June 2024, which prioritised growing Queensland’s protected area estate.

In a statement, the Government said the creation of a new Greater Glider Forest Park will ‘not just support the forest industry but also demonstrate the Miles Labor Government’s commitment to sustainable development more broadly’.

The greater glider (*Petauroides volans*) is an iconic marsupial, listed as endangered under both Queensland and national environmental laws. A dedicated park is a strategic step towards protecting this species. The Greater Glider Forest Park areas will expand and link existing but fragmented protected areas, ranging from near Conondale National Park in the Sunshine Coast Hinterland northward through to Cordalba National

Park (near Childers) to conserve core greater glider habitat.

“This Government has committed a record \$262.5 million over four years to grow our protected areas—the single largest investment of its kind in Queensland’s history,” Minister for the Environment and the Great Barrier Reef and Minister for Science and Innovation Leanne Linard said.

“Since 2015, around 1.88 million hectares of land has



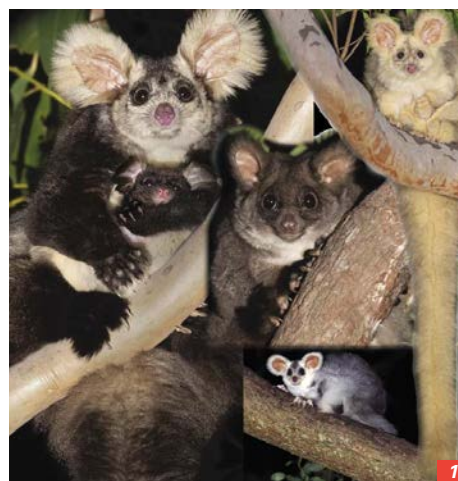
been added to the protected area system, increasing from 13.1 million hectares to almost 15 million hectares protected.

“This announcement builds on the hard work we are doing across Queensland to future-proof populations of threatened species.

“Queensland’s Protected Area Strategy will continue to protect the natural and cultural values of vitally important ecosystems,” Linard said.

“I know how important Queensland’s timber industry is to our state’s housing and building sectors,” Assistant Minister for Train Manufacturing, Regional Development and Jobs, and Member for Maryborough Bruce Saunders said.

“That’s why the Miles Labor



1/ **The Government says the initiative is an indication of its dedication to both the environment and the timber industry.** Image: Logan City Council

2/ **Timber Queensland said the move makes a mockery of the aim to maintain current timber supply levels.** Image: Shutterstock

3/ **Minister for the Environment and the Great Barrier Reef and Minister for Science and Innovation; Leanne Linard.** Image: via facebook/leannelinard



Government is supporting timber workers and the industry to continue building our state, while also increasing our protected area estate.

“The terms of reference we released in June mapped out our priorities as a government, including environmental protections.

“A Greater Glider Forest Park is an important step towards supporting this iconic endangered species, the forestry industry and sustainable development.

“I’m proud to be part of a government that is doing what matters to protect what makes our state great.”

Queensland Conservation Council Director Dave Copeman said he is delighted at the new forest park celebrating the iconic greater

glider, Australia’s largest gliding possum.

“We strongly welcome this new 54,000 hectare refuge for greater gliders.

“Glider habitat continues to be logged and cleared on both private and public lands across their range, so every hectare we can save is critical.

“It is a much-needed breather for one of our cutest and irreplaceable Queenslanders, the greater glider.

“The new park will protect vital habitat.

“It’s urgent we do all we can to save this incredible Queensland animal from extinction, and we congratulate the Queensland Government on this action.”

Cont P 4

From P 3

However, Timber Queensland has said the announcement is an 'election stunt' that makes a mockery of the new timber policy.

In a statement, the peak state body for the forest and timber industry in Queensland has accused the Miles Labor Government of pulling an election stunt to appease environmental activists with scant regard for its own timber policy, environmentally sound land management and the many regional communities and thousands of people dependent on the timber industry.

Timber Queensland Hardwood Division Chair Curly Tatnell said the recent public pronouncement by the Government to form a Glider Park in South-East Queensland with pre-determined areas of mapped forest makes a mockery of the consultative framework the Premier

established less than two months ago.

"The first meeting of the advisory group under the Government's new timber policy only took place on 15 August. This group is tasked with providing advice on the scope and options for timber supply and protected areas to be worked through to the middle of 2025," said Mr Tatnell.

"From 2025 the hardwood industry will already face a 40% reduction in state timber supply in the region due to a unilateral decision by the Government in 2019 to cease timber harvesting in the South-East Queensland Regional Plan area," he said.

"Now we have the Government railroading further forest areas to be taken out of production with no consultation with the group or testing of the scientific validity of mapped areas or other alternatives for glider protection. There is also no

information on timber supply impacts. This is disingenuous and an insult to the workers and families in our sustainable native forest industry.

"We have written to the Premier seeking assurances for long-term contract certainty for native hardwood saw millers from state forests which has fallen on deaf ears and put \$140 million of planned investment for timber production and 6000 jobs at risk.

"We do not support the locking up of forests where there is clear evidence that well-managed state forests provide superior environmental and economic outcomes for the community.

"It also makes a mockery of the Government's aim to maintain current timber supply levels from 2025 to 2034 as an essential building material in the middle of a housing crisis", Mr Tatnell said.

Grandstanding by needs,

environmental activists and a rushed announcement by a government to win over green voters should not determine forest and timber industry policy. Decisions on the long-term management of forests should be evidence-based with empirical data and genuine consultation rather than ideological opinion."

"We believe State forests should already be considered part of the protected area system, just like National Forests in the United States and other multiple-use and cultural landscapes across the world, given that state forests are managed in accordance with strict environmental regulation and adopt selective harvesting practices to maintain permanent healthy forests with timber, recreation and biodiversity outcomes."

**On the cover: The Queensland Government's announcement of the Glider Habitat has been criticised by Timber Queensland.**  
Main image: Shutterstock. Inset image: wikimedia



**NTHA CAN**

**TRAIN AND UPSKILL YOUR EXISTING TEAM MEMBERS**

- ✓ Nationally recognised qualifications and training
- ✓ Specialist industry trainers

**STRENGTHEN YOUR TEAM**

RETAIL, SALES, BUSINESS, SUPPLY CHAIN OPERATION AND LEADERSHIP QUALIFICATIONS

(RTO 5343)  
**1800 822 621**  
**ntha.com.au**




Australian Forest Products Association

**AFPA THE LEADING VOICE FOR AUSTRALIA'S FOREST PRODUCTS SECTOR**

# Further definition of active forest management welcomed

FORESTRY Australia has welcomed the publication of an academic paper looking at the issue of active management of forests.

The paper, *Active management: a definition and considerations for implementation in forests of temperate Australia* (Bennett et al. 2024) has been published in Forestry Australia's scientific journal, *Australian Forestry*.

Acting President of Forestry Australia Dr Bill Jackson said 'active management' is a common term in Government and forest stakeholder reports, policies, and strategies in Australia and around the

world, but up until now has not been well defined.

"The paper explores where active management sits in relation to a sometimes-confusing array of related concepts including passive management and adaptative management," Dr Jackson said.

He believes the paper answers questions around active management – and how it relates to forest management – by stating that active management is principally about human engagement in shaping forests and is deliberate tending of forests by humans for diverse purposes and goals relating to biodiversity conservation, ecosystem services and function including resilience.

"The definition reflects the need to ensure forests have ongoing attention and that



**William Jackson, Acting President of Forestry Australia has welcomed the paper.** Image: Forestry Australia

appropriate management practices are applied," Dr Jackson said.

"The definition allows for broad and inclusive approaches (including more 'minimal intervention' approaches) to forest management, which is in contrast to more rigid forest management approaches which may otherwise exclude communities or social and

cultural practices.

"Australia's changing social and environmental contexts and the shifting relationships of society with forests calls for a new vision for forests, clear definitions, and fresh, evidence-based approaches to forest management.

"This paper and definition will serve as a valuable resource for all forest and land managers, policymakers and stakeholders looking to incorporate active management into their practice.

"The authors note the importance of having an adaptive management framework to guide active management, delivering healthy and resilient forests and the environmental, social, economic and cultural benefits they provide in perpetuity," Dr Jackson said.

“NEED TO ENSURE FORESTS HAVE ONGOING ATTENTION”



## Are you following us on social media?

Please like and share our page so we can get the timber and forestry message out to a bigger audience. If you like our publication, please leave us a review.



## Unsure how the EUDR may affect you?

Speak with us today.



[responsiblewood.org.au](https://responsiblewood.org.au)

Responsible Wood 

BW/1-10-1





# QUEENSLAND TIMBER FEST

SUNDAY 15 SEPTEMBER  
FREE FAMILY FUN DAY, GYMPIE

Free  
BBQ  
lunch

Virtual reality  
headsets  
Industry  
supporter displays  
& stalls

Explore the  
Woodworks  
Museum for  
free!

**WE'RE AN INDUSTRY BUILT ON FAMILY VALUES – IT'S TIME WE STAND AS ONE!**

Thousands of families rely on the forest and timber industry.

This is our day to stand together to show Governments and the community our commitment to a renewable future!

**Let us know if you're coming!**

RSVP for catering via <https://bit.ly/QldTimberFest> or scan the image below with your phone's camera



Woodworks Museum, 8 Fraser Road, Gympie  
10am - 3pm | Enquiries [admin@timberqueensland.com.au](mailto:admin@timberqueensland.com.au)

# Forestry Corporation begins controlled burning



Forestry Corporation has commenced hazard reduction with the aim to protect forestry areas and wildlife. Image: Shutterstock

STRONG winds and warmer temperatures have firefighters on early alert with a hazardous fire season ahead.

While early in the season, Forestry Corporation is staging a controlled burn in the Kiwarrak State Forest, near Taree in NSW, to improve habitat for wildlife and protect neighbouring properties ahead of the summer bushfire season.

Seven Forestry Corporation fire crews established containment lines on the 1000-hectare burn near Possum Brush prior to internal burning.

Senior Field Ecologist Mark Drury said the burn-reducing forest fuel loads had been timed with the onset of favourable weather conditions.

“The aim of the burn is to maintain the natural and historic grasses in the forest by burning off the dense shrub understorey, lantana,

weeds and vines, which have become really thick after the intense Hillville fire in 2019,” Mr Drury said.

“Cool fires aimed at maintaining grass areas in our forest is essential for wildlife and maintaining the forest in a natural state. Hazard reduction at this time of year also keeps neighbouring property owners and our firefighters safe in respect of future summer bushfires.

“A wet autumn period prevented us from conducting widespread hazard reduction burns, but we now have the perfect window to conduct this burn in mild weather conditions,” he said.

Kiwarrak State Forest was heavily burnt in 2019 during the Black Summer bushfires.

Following the fires, Forestry Corporation in partnership with Local Land Services has monitored wildlife in Kiwarrak State Forest under the Australian Government’s koala conservation and protection program.

**“ WE NOW HAVE THE PERFECT WINDOW ”**

Cont P 7

## SEPTEMBER

**7: WFTN 'Cocktails for Charity' event, 2.00 - 6.00pm – Loft West End, Brisbane.** Join us for an afternoon of cocktails and charity to support RizeUp, an organisation dedicated to providing life-changing practical assistance to families affected by domestic and family violence. For more information, visit: <https://www.ntha.com.au/eventdetails/25321/wftn-cocktails-for-charity>.

**11: Forestry Australia Webinar - Carbon method development – ONLINE EVENT, 12.30am-1.45pm (AEST).** For more details and to register, visit <https://www.forestry.org.au/webinar-carbon-method-development/>

**13: NTHA NSW/ACT State Awards – Hilton, Sydney.** Join us in celebrating the New South Wales & ACT Timber and Hardware Industry. Nominations open at [https://www.ntha.com.au/events/2024-nswact-state-](https://www.ntha.com.au/events/2024-nswact-state-awards-nominations/)

awards-nominations/ Contact Tahlia at [events@ntha.com.au](mailto:events@ntha.com.au)

**23: Latin America Forest Investment Conference – Porto Alegre, Brazil.**

**24-25: International Woodchip and Biomass Trade Conference – Porto Alegre, Brazil.**

**25-27: Field Trip – Rio Grande do Sul State, Brazil.**

## OCTOBER

**22-23: International Woodchip and Biomass Seminar and Networking Event – Singapore.**

**29-31: Forestry Australia 2024 Symposium – Mercure Ballarat Convention Centre, Golden Point, VIC.** Theme: Healthy and resilient forests for our future, will facilitate conversation and collaboration that regardless of land tenure and ownership, healthy and resilient forests should be the objective for all forest and land managers. The Symposium is a focused three-day gathering, consisting of two days of plenary and concurrent sessions, and a

day of Field Trips. The two-day program will feature a range of Keynote and Invited Speakers, who are experts and thought leaders in their field. The Symposium will also feature several social functions, facilitating networking and collaboration in an informal and relaxed environment. For more information, visit <https://www.forestry.org.au/2024-symposium/>

## NOVEMBER

**13-15: AFCA annual Gala dinner & conference – Launceston, Tas.** For more information visit: <https://www.afca.asn.au/Events/afca-2023-conference-photo-gallery>

## SAVE THE DATES 2025

**MARCH 22: NTHA SA/NT/WA State Awards – National Wine Centre, Adelaide.** Join us in celebrating the SA, NT & WA Timber and Hardware Industry. Contact Tahlia at [events@ntha.com.au](mailto:events@ntha.com.au)

**MAY 30: NTHA QLD State**

**Awards – Brisbane City Hall, Brisbane.** Join us in celebrating the QLD Timber and Hardware Industry. Contact Tahlia at [events@ntha.com.au](mailto:events@ntha.com.au)

**MARCH 25-28: DANA Global Wood Products Supply and Demand Trends Seminar, Global Forest Investment Conference, and WWII Battle of the Bulge Battle sites tour – Europe.** Contact [admin@dana.co.nz](mailto:admin@dana.co.nz)

**JUNE 22-26: World Conference on Timber Engineering – Brisbane.** WCTE is the world's leading scientific forum for the presentation of the latest technical and architectural solutions and innovations in timber construction.

**OCTOBER 20-22: International Woodchip and Biomass Seminar and Networking Event – Singapore.**

**OCTOBER 23-24: Field Trip – Vietnam.**

From P 6

This current burn is part of this habitat restoration and monitoring project and follows a burn last year on the Hillville side of the forest to improve habitat.

"Monitoring programs in

Kiwarra State Forest post the bushfires have indicated strong recovery in wildlife populations, including koalas, and this burn is a way of restoring the forest and minimising fuel loads now that the forest is starting to dry out," Mr Drury said.

"Burning under controlled conditions ensures flame heights remain low, with a mosaic style of burning seeing slow moving flames and low-heat intensity.

"This enables wildlife to safely move out of the path of the flames, which would not

be the case in a fast-moving summer bushfire involving extreme heat," he said.

For the latest information on fire operations across NSW visit the NSW Rural Fire Service website or download the Hazards Near Me app.

# A CUT ABOVE...

Do you crosscut timber packs at ±1mm accuracy?

**Or cut structural timber, panel products (MDF & LVL), paper rolls?**

Or produce pallet dimensions or studs on fixed lengths?

**HOLTEC has a solution for you!**

Our scope of supply:

- Mobile and stationary chainsaws
- Timber crosscut stations
- Log cutting stations
- Circular saws

- Mechanisation
- Sorting lines
- Scanning and optimising systems
- Special systems



For more information contact:

**HOLTEC**  
YOUR PARTNER FOR THE PERFECT CUT

Ph: +64 9 416 8294 // Fax: +64 9 416 8296  
Email: [sales@holtec.org](mailto:sales@holtec.org) // Web: [www.holtec.org](http://www.holtec.org)

# Market confidence bouncing back in building market

"MARKET confidence appears to be returning to the home building market, with an increase in residential building approvals in the month of July," stated HIA Economist, Maurice Tapang.

The Australian Bureau of Statistics today released its monthly building approvals data for July 2024 for detached houses and multi-units covering all states and territories.

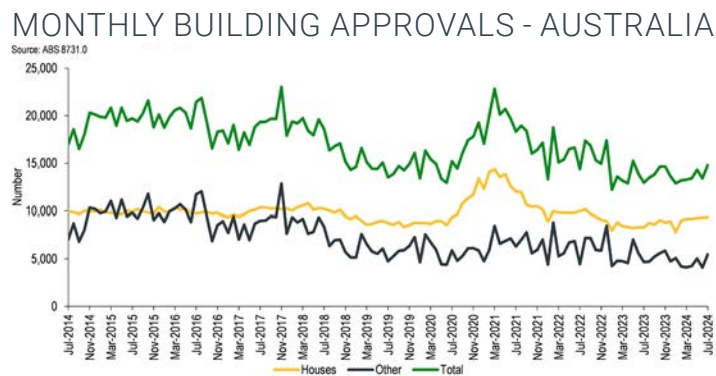
"Residential building approvals rose by 10.4 per cent in July 2024, with a 0.3 per cent rise in approvals for detached houses and a 33.7 per cent rise in multi-unit approvals," added Mr Tapang.

"Nationally, there were 9,350 detached homes approved for construction in July 2024 and 5,440 multi-unit approvals.

"The small increase in detached home approvals is being driven by what appears to be sustained improvements in Western Australia, Queensland and South Australia, while New South Wales and Victoria remain more constrained.

"The strong improvement in the number of multi-unit approvals comes off the weakest month for multi-units in 12 years.

"House approvals over the three months to July 2024 were 2.3 per cent higher



compared to the previous three-month period, to be 12.6 per cent higher compared to the same time in the previous year.

"Across the capital cities, house approvals in the three months to July rose by 19.8 per cent in Perth compared to the previous three-month period, with Adelaide recording an increase of 13.7 per cent and Brisbane an increase of 10.6 per cent.

"The two largest capital cities recorded more modest increases in house approvals, with Sydney up by 2.8 per cent compared to the previous three-month period and Melbourne up by 2.0 per cent.

"The uplift in home building approvals in those markets outside of Sydney and Melbourne has been driven by strong economic conditions and the relatively lower cost of delivering a new home.

"It has been almost ten

"Unemployment remains very low, and there are now more people employed in the economy than there were prior to the pandemic.

"There is strong demand for homes and a low level of supply, as evidenced by low rental vacancy rates particularly outside of Australia's southeastern capitals.

"Policymakers that ease the

tax and regulatory burdens on new homes will also help in lowering the cost of delivering a completed home to market," concluded Mr Tapang.

House approvals over the three months to July 2024 increased by 57.6 per cent in Western Australia compared to the same time in the previous year. This was followed by Queensland (+22.1

per cent), Victoria (+8.8 per cent) and South Australia (+4.4 per cent). The other jurisdictions recorded a decline over the same period, led by Tasmania (-19.3 per cent), the Australian Capital Territory (-12.4 per cent), the Northern Territory (-8.2 per cent) and New South Wales (-4.7 per cent).



**Strong economic conditions and lower cost of building is driving an increase in areas outside cap cities.** Image: Shutterstock

months since the last increase in the cash rate. Stable interest rate settings have provided the certainty needed to see a rise in home-building confidence.

"Materials price growth and build times for homes have stabilised and returned to normal pre-pandemic levels, which provides certainty with the cost to build.

## NTHA NSW nominees announced

THE nominees for the NSW & ACT NTHA State Awards have now been announced with industry peers sharing congratulations to those in the running win. Announced on their Facebook page, NTHA have 15 categories in the awards extending from

Retail Supplier of the Year to Apprentice of the Year.

The industry awards holds a prestigious status as the leading event within the timber & hardware industry, where excellence and achievements are acknowledged.

This platform offers a valuable opportunity to appreciate timber merchants, hardware stores, suppliers, manufacturers and individuals who consistently go above and beyond, contributing significantly to the success of either your business or the

industry as a whole.

Members of the timber and hardware industries will come together on Friday, 13 September for the event which will be held at the Hilton Hotel in Sydney.



# HIA calls for overhaul of planning system

"HOUSE approvals are taking far too long to get through local councils and exacerbating Australia's worsening housing and rental shortages," said Mike Hermon, HIA Executive Director, Planning & Environment.

"Planning systems across the country are buckling under the weight of current approvals let alone addressing the necessary 40% increase of housing that Australia desperately needs.

"Under current systems, if you submit an application for a new home or major renovation today, you are unlikely to get approval to start this side of Christmas with standard house approvals taking well in excess of 6 months.

"All states and territories have recognised that significant planning reform is

needed which HIA strongly supports.

"Yet on the ground homeowners and builders are seeing no meaningful change and instead the opposite is occurring. House and apartment approval timelines continue to take longer and get more complex to obtain.

"HIA was encouraged by federal, state, and territory governments to sign onto a national planning reform blueprint in August of last year. This blueprint aims to support planning systems around the country in implementing measures to fast-track approvals.



**The HIA is calling for an overhaul of the approval process to boost housing.** Image: Shutterstock

"However, 12 months after the Planning Reform Blueprint was issued, we have yet to see the dial on approvals improve.

"HIA has compiled a Scorecard to assess each state and territory planning systems progress against implementation of the Planning Blueprint measures, however, no state has scored greater than a 3 out of 5 on

progressing these key reforms.

"It has been positive to see Governments announce their various intentions to implement planning reforms over the last few months. Though announcements in themselves do not deliver housing outcomes for homeowners.

"Simply put the time for business-as-usual solutions to planning and zoning issues has passed. Instead, we need bold leadership by all tiers of Government.

"HIA's Planning Blueprint Scorecard sets out important initiatives to progress the necessary reforms to get shovel-ready land delivered faster and ultimately resulting in getting Australians into much-needed housing sooner," concluded Mr Hermon.



## 2024 DANA - GINGKO

### GLOBAL WOODCHIP AND BIOMASS TRADE CONFERENCE & NETWORKING EVENT








International Forest Industry Advisors

GINGKO CONSULTING

SINGAPORE CONFERENCE 21 - 22 OCT + 2 DAY FIELD TRIP TO GUANGXI, CHINA 24 - 25 OCT

## 2 day conference at Grand Copthorne Waterfront Hotel, Singapore

### 26 speakers on several themes:

- The global status of the tree based carbon credit industry
- Global Wood Chip Trade: Regional user and supplier updates
- Details of 160+ dedicated woodchip vessel shipping fleet
- Global Biomass: w/chips, white/black pellets and PKS
- Global pulp-mill status/expansions/future: Market pulp trends
- A 'New Projects, New Products' panel.

## Optional 2 day field trip to Guangxi, China

### Visits to:

- Eucalyptus nursery/plantations/harvesting
- Wood panel plants
- Pulp mill
- Wood import port

FOR WEBSITE

[CLICK HERE](#)

OR TO CONTACT ORGANISER

[CLICK HERE](#)

A cyber attack  
could cost your  
timber business  
**\$46,000**



## Stop the hack!

Protect your data with free and simple cyber security training. It only takes 2 minutes to enrol.



**Act now**

[cyberwardens.com.au](https://cyberwardens.com.au)



have partnered with  
**COBBARA**  
SMALL BUSINESS  
ORGANISATIONS  
AUSTRALIA

to bring the timber industry  
**CyberWardens.**

# REEF urges action by Albanese Government

THE Resources Energy & Environment Foundation (REEF) urges the Albanese Labor Government to consider the environmental contribution to the nation made by those working in the native hardwood timber industry in NSW, when considering any changes to environmental legislation.

For every native hardwood tree harvested, more than one tree is replanted or regrown. REEF Forestry Awareness Program chair Noel Atkins said retaining a sustainable and environmentally responsible native hardwood timber industry is essential for Australia's future, its sovereignty and rural NSW communities.

"Native hardwood timber forest workers are proud environmental custodians, sustaining a precious commodity for future generations. Native hardwood trees take 30-50 years to reach maturity before they can be harvested," Mr Noel Atkins said.

"Native hardwood timber is sustainably harvested in accordance with strict regulatory codes to protect the regrowth of forests for the benefit of flora and fauna.

"Harvested trees are replaced with new ones through natural seeding, regrowth or plantation, which provides continual carbon storage. They are the ultimate renewal which can be continually regrown and harvested, reducing the high carbon input where steel, plastic and concrete are used."

A sustainable, responsibly maintained timber industry helps reduce reliance on overseas products. Australia



**Mr Noel Atkins, chair of Research Energy & Environment Foundation (REEF) Forestry Awareness Program.**  
Image: supplied REEF

imports more than \$5 billion of timber and wood products, particularly from Southeast Asia.

Hardwood Timber management in NSW is balanced and is responsibly managed. Decisions are made on how to meet the growing demand in the future. The Forestry Corporation of NSW manages around two million hectares of native hardwood forest, 35,000 hectares of hardwood plantations, and 225,000 hectares of softwood (pine) plantations. The available harvesting area of State Forests in NSW is less than 12 percent. Of this, a little more than one percent of the forest is subjected to selective harvesting each year, which is then regenerated for future use.

Native plantation forests, while essential, are complimentary to the vast area of native hard wood forest currently available and essential to meet the timber resource needs. They have a different forest ecology

Cont P 11

From P 10

(mono forest) and are not suitable for several hardwood species that grow in a natural hardwood multi-forest such as Tallowwoods.

"It is estimated there are more than 8900 direct jobs in NSW and up to 22,000 people

employed across the state considering the supply chain from forest management to retail products," Mr Noel Atkins said.

Tallowwood, Ironbark, Turpentine, Mahogany are only available in native hardwood forests. They are used in structural and infrastructure

projects such as railways, mining, wharves, jetties, bridges, fencing, farming. Specialty hardwood native timbers such as Brush Box and Blackbutt are used as feature timbers in iconic buildings and structures like the Sydney Opera House, Sydney Darling Harbour Wharf Precinct at Barangaroo and Federal and

NSW Parliaments.

REEF is a not-for-profit research-based organisation, made up of people with a range of skills and interests from a diverse group of communities. Their common aim is to improve regional communities through the environment, its people and future growth.

## Are forests at stake in US election?

IN the Trump administration, trees were crops. In the Biden administration, they're guardians of the climate.

This fall's election will determine which label wins, though the Forest Service's work on the ground may not change all that much.

That's one conclusion from forest policy groups, which see the rhetoric around managing national forests hinging on the presidential race between Kamala Harris, the Democratic

nominee, and Donald Trump, the Republican contender, even as radical changes aren't likely anytime soon in the 193-million-acre forest system.

"There isn't much controversy over the need to do more to improve the health of the national forests," said Bill Imbergamo, executive director of the Federal Forest Resource Coalition, representing companies that harvest timber on federal lands.

He added, "I don't see a

potential Harris or Trump administration giving up on active management as part of the solution to the wildfire crisis."

No matter who's elected this fall, the Forest Service, will continue to log forests, including older trees in some places. It will plant more trees to catch up with a decadeslong reforestation backlog and allow monitored wildfires to burn in some places, despite scattered but vocal opposition to the policy. And the agency will

likely keep spending more than half of its discretionary budget fighting fires, a milestone first hit in 2015.

Possibly more important is who the incoming president picks as secretary of the Agriculture Department and how closely the White House inserts itself into forest policy, said Steve Ellis, a former Forest Service and Interior Department official who heads the National Association of Forest Service Retirees. "This choice is critical."

# arxada

IS IT SAFE TO USE  
PRESERVATIVE - TREATED  
WOOD FOR MY RAISED  
GARDEN BED?

## Yes!

TANALITH® E Copper Azole  
treated timber is safe to use  
around fruit and vegetables!



# TRUST

## Tanalised® Ecowood®

### PROVEN WOOD PROTECTION

Tanalised, Tanalith, & Ecowood are  
registered trademarks of Arxada @ 2023



# Business Grants

Access state and/or federal funding to grow your business!

Enews has partnered with a professional grant writing business. Watch this space as not all grants are made public. We will publish grants for various states/territories for our

industry here in Enews.

Our connection might be available to assist you with eligibility criteria, grant writing, application process and

lodgement. They have a high success rate, so contact us if you would like to make an appointment. Contact: [editors@timberandforestryenews.com](mailto:editors@timberandforestryenews.com)

## Tree grants now open

APPLICATIONS are now open for the bee-friendly tree grants. Funding is for trees that are indigenous to the region, provide nectar and/or pollen rewards that support and encourage pollinator health and encourage a diversity of pollinators to enhance crop pollination outcomes.

Tree Grants can be between \$1,000 – \$10,000 each. Trees planted at 1000 trees per ha will result in planted areas between 0.5 -10ha in size.

Grants will be assessed on their merits based on the following criteria:

- Impact /benefits to local environment, farm and

community

- Likelihood of long-term survival (risks are identified and mitigation strategies in place)

- Species mix (preference for indigenous species, i.e. local to your bioregion with an allowance to cater for climate change forecasts)

- Location

- Permanent plantings

- Return on investment (level of co-financing).

It is anticipated that trees will be ordered in spring 2024 for planting in 2025.

To be eligible to apply for these tree grants, you must



The funding is for trees that are indigenous to the region. Image: Shutterstock

either be a BFF CERTIFIED Farm or have your BFF CERTIFIED application submitted and pending approval by the tree grant closing date.

Round two of this grant is

currently open and applicants are welcome to apply nation wide.

Businesses and individuals are encouraged to apply for the grants. Applications close September 10.

## Do you export and would you like to access a federal grant to assist you?

NEXT week we will be looking at the changes and new criteria for the Export Marketing Development Grant (EMDG) which you need to be aware of,

including the 3 tiers, grant sizes, timing and criteria based on each tier.

Important: once the maximum potential funding limit is reached,

applications will close, and this is expected to be a very short period. The essential key is – lodge correctly and lodge early! Until next week.

## Mass timber projects make awards shortlist

SEVERAL mass timber projects have made the cut for the 2024 Structural Awards. 30 projects in total, showcasing global innovation in sustainable engineering and environmental and social responsibility have been selected for the shortlist

Unveiled by the Institution

of Structural Engineers (IStructE), the awards spotlight 30 of the most innovative and sustainable structural engineering projects worldwide.

This year's selection continues to emphasise the construction industry's growing commitment to

environmental responsibility and social impact.

The awards maintain their focus on four key attributes: planet, people, process and profession, reflecting the engineering community's increasing emphasis on sustainability and ethical standards.

All shortlisted projects were required to provide detailed embodied carbon footprint calculations using the IStructE carbon calculator tool, underscoring the industry's efforts to reduce environmental impact.

1075C



# **UNMATCHED PRODUCTIVITY. UNMATCHED RELIABILITY.**

The Tigercat 1075C forwarder is unmatched in terms of productivity and reliability. Innovations like low-wide® and the hooked crane set Tigercat apart from the competition. The 1075C Forwarders now include the Tigercat built WideRANGE transmission.

Experience the Tigercat 1075C forwarder for yourself.



[www.onetrak.com.au](http://www.onetrak.com.au)



[www.tigercat.com](http://www.tigercat.com)



Scan to learn more

# QLD Timber Fest is happening this September

THE countdown is on to Queensland Timber Fest for 2024 with Timber Queensland encouraging Gympie locals and visitors to head along. The family fun day will be held on Sunday, September 15 and is designed to remind Governments that the industry is relied upon by thousands of people and their families.

The event includes a free barbeque lunch and access to the Woodworking Museum packed with fascinating displays exploring the history of Queensland's forest and timber industry.

Additionally, there will be displays from industry supporters like Stihl, John Deere and Koppers plus timber chainsaw art

displays and the opportunity to explore forests and sawmills via Virtual Reality experiences.

Plus speeches and interviews with Mick Stephens, CEO, Timber Queensland; Tony Perrett, Member for Gympie; Bruce Saunders, Member for Maryborough and Glen Hartwig, Gympie Regional Council Mayor.

Timber Queensland said the reason behind the event is both major parties have committed to ambitious housing targets over the next few decades which will require secure timber supply



Timber Fest Qld will be held in Gympie on Sunday, 15 September. Image: Timber Queensland

chains for both housing and public infrastructure such as the 2032 Olympics.

"The forest and timber industry wants the right policy settings put in place by governments to generate investment and expansion of forest resources to meet the rising demand for housing and construction," they said in a statement.

"A key issue facing the

industry is a lack of policy certainty over future access to public and privately managed native forests for sustainable hardwood production, as well as minimal incentives and measures to promote plantation and farm forestry expansion to increase timber supply.

"Timber can play a major role in decarbonising the economy through the substitution of high emission materials such as steel and concrete in the built environment"

The event will be held at the Woodworks Museum and Interpretive Centre, 8 Fraser Road, Gympie Qld 457, Sunday 15 September from 10am – 3pm.

## Job position to fill?

For as little as A\$10.00 per week, you can advertise your positions vacant on our dedicated eNews jobs web page.

Job ad: A\$30.00 for 3 weeks

Prices exclude GST.

[CLICK TO ADVERTISE](#)

**timber**  
& FORESTRY *e*news

Contact Campbell McInnes at  
campbellm@timberandforestrynews.com



# From forest to fabric: Bamboo undies are comfortable and sustainable

IN a world where every purchase affects the planet, Boody urges us to consider the impact of even our smallest choices, starting with our underwear. Boody merges exceptional comfort with significant social and environmental benefits in their supply chain, showing how our clothing choices can make a profound difference. By using FSC-certified bamboo-derived viscose, Boody delivers exceptional softness while supporting the protection of forest wildlife and the rights of communities and workers reliant on sustainably managed forests.

The fashion industry faces a critical challenge, balancing high demand with environmental responsibility. While renewable fibres like man-made cellulosic fibres (MMCFs) offer a path toward more sustainable solutions, around 50% are still sourced from uncertified forests. This jeopardises precious ecosystems and underscores the urgent need for change.

This year, Boody proudly became an FSC Promotional Licence Holder and an FSC Fashion Forever Green Pact signatory. This commitment highlights their dedication to sustainable sourcing and forest stewardship, ensuring that each garment bearing the FSC label contributes to the responsible management of our planet's forests.



1/ **Boody Bamboo Basics clothing.**

2/ **Boody Bamboo underwear.**

3/ **Rebecca Innes, Product Lead, Boody.** All images: FSC



"Sustainability and comfort are the pillars of our philosophy. We don't view sustainability as an afterthought but as an integral part of our process and purpose," shares Rebecca Innes, Boody's Product Lead.

Boody's dedication to sustainability is evident in its choice of materials, which includes products crafted

from organically grown bamboo sourced from FSC-certified suppliers.

"Bamboo is the world's fastest-growing plant, requiring no pesticides or insecticides. It absorbs CO<sub>2</sub> and produces oxygen at a rate 35% higher than trees," Rebecca explains.

"We're excited to announce our support of the Forest

Stewardship Council and our recent transition to becoming Promotional Licence Holders with FSC," she continued.

"We are proud to be the first Australian Promotional Licence Holder signatory to the FSC Fashion Forever Green Pact. Our FSC licence is important to us because we want our customers to know that when they buy our products, the bamboo has been responsibly and sustainably sourced to protect the world's forests for years to come."

In another step towards sustainability, Boody introduced The Goodness Loop in 2023, in partnership with UPPAREL. This initiative gives old, retired textiles a second life, diverting them from landfills and rewarding participants with \$35 to spend on Boody's basics.

Boody is redefining comfort and sustainability in fashion, offering consumers a chance to embrace a wardrobe that cares for both the body and the planet. By choosing Boody's FSC-certified ranges, you're not just investing in luxurious basics but also supporting a future where every small choice can have a positive impact on the environment.

## Have some news to share?

Send media releases, news stories, events, any timber and forestry news related information with us anytime to Nicky, Donyale and Jess -

[editors@timberandforestrynews.com](mailto:editors@timberandforestrynews.com)

**timber**  
& FORESTRY *e*NEWS

Contact Nicky,  
Donyale or Jess today...

# Another 'world's tallest timber tower' for Milwaukee

THE city Milwaukee in the US is already home to the world's tallest timber tower. But another, even taller, wooden skyscraper could be added to its skyline, designed by Vancouver-based studio Michael Green Architects (MGA).

CNN reports the firm recently released plans for the development, which includes a 55-story tower made principally from mass timber — thick, compressed, multilayered panels of solid wood. If built, it would usurp the current world title holder, the 25-story Ascent Tower by Korb + Associates Architects, as well as becoming the tallest building in the state of Wisconsin.

MGA, which specializes in wooden architecture, hopes that the project will set a “new global benchmark for mass timber construction.”

The project is part of the redevelopment of the Marcus Performing Arts Center, which opened in 1969 and won the Honor Award for Excellence in Architectural Design from the American Institute of Architects in 1970. Led by Neutral, which bills itself as a “regenerative development company,” the redesign will transform what is currently the centre’s concrete parking lot into a space with residential units, offices, restaurants, cafes, grocery stores and public plazas. According to MGA, construction will cost an estimated \$700 million. The plan is currently going through the city’s approval process, during which it is expected to evolve.

While the use of mass



**The redevelopment includes retail spaces, restaurants, offices and residential units.** Image: MGA/Michael Green Architecture

timber is steadily increasing worldwide, thanks to changes in building regulations and shifting attitudes towards the material, it has yet to match the sheer height of buildings made of concrete and steel — although a slew of timber high-rises have been proposed in recent years. MGA says its tower design would be approximately 600 feet (182 meters) tall — more than double the 284 feet (87 meter) tall Ascent tower.

“The race for height is important,” said Michael Green, an architect and founder of MGA. “It’s not about showing off, it’s about showing what’s possible to the public.”

He argued that the reason timber skyscrapers haven’t yet become mainstream is that climate change hasn’t been at

the centre of the conversation. “We didn’t really need to challenge the status quo of steel and concrete,” he said. “But because those materials are so hard on the climate, we had to find a different way to build towers and big buildings in general.”

Is it possible to build cities that are resilient to earthquakes and flooding? Architecture firm Foster + Partners hope to do just that with their masterplan for the city of Antakya, in southeastern Turkey (pictured here in a rendering).

An earthquake ravaged this city ‘beyond imagination.’ Now it’s being rebuilt to withstand any natural disaster

Currently, the building and construction sector accounts for 37% of global emissions, much of it down to the production and use of materials such as concrete and steel, which are massive carbon emitters. Trees are the opposite, absorbing carbon throughout their lifetime. If those trees are turned into mass timber and used for construction, that carbon is “locked in,” or sequestered for

however long the building stands. “By building with it, we’re actually building with a carbon sink,” Green argued.

However, he admits that sourcing enough sustainable timber at the scale needed to build our cities could be a challenge. Indeed, some studies warn that increased demand for

mass timber could increase pressures on land use.

To deliver its purported carbon savings, trees must be grown for a significant length of time to sequester carbon and be replanted once they are cut down. Green said that MGA uses wood from responsibly managed forests in North America.

Long term, he believes that to counter supply issues, architects will have to think beyond wood, adding that MGA is currently working on creating other plant-based construction materials. However, he contends, if we want to ease off concrete and steel, mass timber “is the best option for today.”

The redevelopment of the Marcus Performing Arts Center includes retail spaces, restaurants, offices and residential units.

The redevelopment of the Marcus Performing Arts Center includes retail spaces, restaurants, offices and residential units. MGA/Michael Green Architecture

“THE RACE FOR HEIGHT IS IMPORTANT... IT'S NOT ABOUT SHOWING OFF, IT'S ABOUT SHOWING WHAT'S POSSIBLE



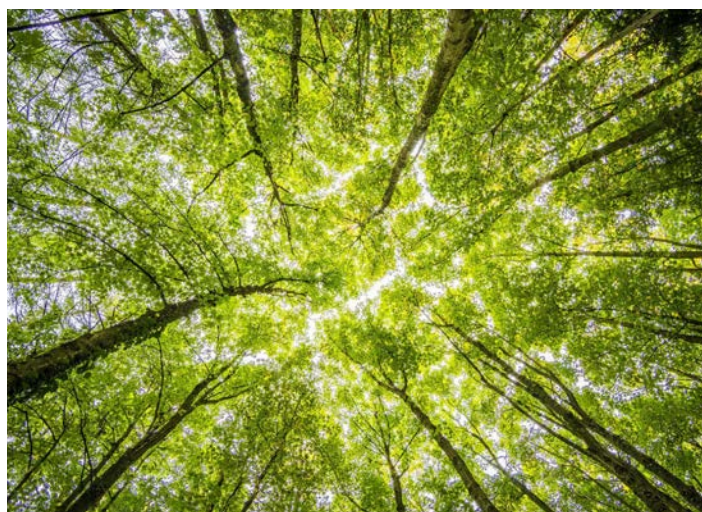
# Nonaoplastics interfering with tree photosynthesis study shows

TINY plastic particles reach the leaves and needles of trees via the roots and disrupt photosynthesis, researchers at the federal technology institute ETH Zurich have discovered.

After absorbing plastic particles, the trees no longer used part of the sunlight's energy for photosynthesis, but dissipated it as heat. This is a typical stress reaction of trees, wrote the Swiss National Science Foundation (SNSF) in a press release on the study on Thursday. The SNSF funded the research project.

For their experiment, the researchers grew 200 young trees, half of them tormalis and half spruce. They placed their roots in nutrient-enriched water instead of soil. They added different concentrations of tiny plastic particles, known as nanoplastics, to the water.

After just a few weeks, the researchers discovered one to two milligrams of



**The study showed that nanoplastics can interfere with tree photosynthesis however it is not believed to be fatal.** Image: Shutterstock

nanoplastics per gram of plant material in the roots. In the trunk and in the leaves and needles, it was around ten to a hundred times less.

Measurements showed that the effectiveness of photosynthesis in the tormalis trees fell by a third within two weeks and by a tenth in the spruce within four weeks. However, the plastic particles had no effect on the growth of the trees. According

to the researchers, this could also be due to the fact that the study was only conducted over a short period of time.

"Our study should not give the impression that trees could die as a result of nanoplastics," ETH Zurich researcher Denise Mitrano was quoted as saying in the press release. But it could be an additional stress factor.

**Source: Federal technology institute ETH Zurich**

From P 16

Other barriers to using mass timber have been both cost and strict building regulations. But in recent years, this has changed, explained Green, with mass timber now cost-competitive with concrete and steel in many regions. "There are more manufacturers available than we had before: now we've got a big competitive market and it's still growing," he said.

Building codes have also evolved, with some countries in Europe mandating the use

of wood construction as part of their climate objectives. In the US, the International Building Code updated its policy on mass timber in 2021, allowing mass timber buildings of above six stories.

The city of Milwaukee has been particularly forward-thinking, Green told CNN, encouraging development within the city center while also being willing to experiment with new materials. The proposed tower will still use concrete foundations and steel components to make up the elevator cores, but he

estimates wood will make up about 90% of the building material.

"It is America's second-scale cities that are breaking new ground on innovations that will help manage climate change," he said.

His hope is that the Milwaukee tower will help to push innovation in climate-friendly architecture, and open people's imaginations to building with timber.

"We need breakthrough moments, and this is a breakthrough moment," Green said.

**Source: CNN**



**Timber Media**  
AUSTRALASIA

Timber & Forestry enews an authoritative and rapid deliverer of news and special features to the timber and forest-based industries in Australia, New Zealand and internationally. *Enews* is delivered weekly, every Thursday, 48 weeks of the year. Advertising rates are competitive with other industry publications. *Timber & Forestry Enews* hits your target market – every week, every Thursday!

## HEAD OFFICE

Timber Media Australasia Pty Ltd  
PO Box 3001  
Maraylya NSW 2765

## PUBLISHER

Timber Media Australasia Pty Ltd

## EDITORS

Nicky Ainley  
Donyale Harrison  
Jess Hockridge  
editors@timberandforestryenews.com

## ADVERTISING

Campbell McInnes // +61 (0) 406 223 007  
campbellm@timberandforestryenews.com

## ACCOUNTS

Chris Parker // +61 (0) 413 710 203  
cparker@ttnews.com.au

## SUBSCRIBE

www.timberandforestryenews.com



*The information contained in this publication has been obtained from sources assumed to be reliable. However, the publishers disclaim all warranties as to the accuracy, completeness, reliability or adequacy of the information displayed. Opinions expressed in Timber & Forestry enews are not necessarily those of directors or the Timber & Forestry enews team. We do not accept responsibility for any damage resulting from inaccuracies in editorial or advertising. The publishers are therefore indemnified against all actions, suits, claims or damages resulting from content in this publication.*

# CLASSIFIED ADVERTISING

## EMPLOYMENT

## ADVERTISING PACKAGES

## PRODUCTS & SERVICES

### LATEST JOBS:

Click this link  
to advertise  
online...

### PACKAGES:

Click this link  
to learn about  
advertising  
packages...

### BUY AND SELL -

New and Used  
Machinery/Equipment

Click this link  
to advertise  
here & online...

## ADVERTISING RATES

### DISPLAY AD RATES

**FULL PAGE:** \$540

297mmH x 210 mmW

**HALF PAGE:** \$320

Vertical • 256mmH x 93mmW  
Horizontal • 125mmH x 190mmW

**THIRD PAGE:** \$240

Horizontal • 73mmH x 190mmW

**QUARTER PAGE:** \$210

Vertical • 125mmH x 93mmW  
Horizontal • 63mmH x 190mmW

### BANNER ADVERTISING PACKAGES

#### • PREMIUM PACKAGE:

FRONT PAGE publication module, email and website modules

- Front page module • 68mmW x 45mmH
- Top email banner • 1200pxW x 145pxH
- Home page website banner • 1000pxW x 120pxH

#### • STANDARD PACKAGE:

PAGE 6 (or similar) module, email newsletter and website module

- Module • 93mmW x 63mmH
- Email module • 336pxW x 336pxH
- Website module • 720pxW x 744pxH

### CLASSIFIED ADVERTISING

**JOB / BUY & SELL ADS: ONLINE & IN PUBLICATION**

720pxW x 744pxH

### TERM DISCOUNTS

12 WEEKS: 7.5%

24 WEEKS: 10%

48 WEEKS: 15%

All pricing is excluding GST and based on a weekly booking. Overseas bookings are exempt from GST.

### DEADLINES

**Display ads:** Book by 9.00am Tuesday prior to publication.

**Supplied artwork:** 12noon Tuesday prior to publication.

Supply hi-res jpg or pdf to our specifications. This is a digital publication, therefore **NO crop marks or bleed is required.**

**Classified advertising: JOB ADS ARE COMPLETED ONLINE.**

Go to [www.timberandforestrynews.com/post-a-job/](http://www.timberandforestrynews.com/post-a-job/) to place a job vacancy. **Book by 12noon Tuesday prior to publication.** Job ads are for individual positions. If more than one position is to be advertised, separate ads will need to be created and advertised accordingly.

**BUY & SELL ADS ARE COMPLETED ONLINE.** Go to [www.timberandforestrynews.com/product/buy-sell-advertisement/](http://www.timberandforestrynews.com/product/buy-sell-advertisement/) to place an ad. **Book by 12noon Tuesday prior to publication.**

### PAYMENT TERMS

New clients invoiced on booking. Existing clients 14 days. All other standard Terms & Conditions apply.

### CONTACTS

#### Media releases and editorial:

Nicky Ainley // Donyale Harrison // Jessica Hockridge  
e: [editors@timberandforestrynews.com](mailto:editors@timberandforestrynews.com)

#### Display ad bookings:

Campbell McInnes // e: [campbellm@timberandforestrynews.com](mailto:campbellm@timberandforestrynews.com)

#### Accounts:

Chris Parker // e: [cparker@ttnews.com.au](mailto:cparker@ttnews.com.au)

## Have some news to share?

Send media releases, news stories, events, any timber and forestry news related information with us anytime to Nicky, Donyale and Jess -

[editors@timberandforestrynews.com](mailto:editors@timberandforestrynews.com)

**timber**  
& FORESTRY *e*NEWS

Contact Nicky,  
Donyale or Jess today...