

FOR OVER
18 YEARS
DELIVERED
WEEKLY TO
15,200
GLOBAL
READERS

Like and
follow us on



ISSUE 828 // November 7 2024

timber & FORESTRY *e*news

JOBS:

- Account Manager
- Business Development Manager

[Click to apply](#)

Research proves benefits of forest certification

COVER STORY P8

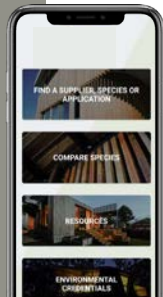


*Do you
have
a job
position
to fill?*

ADVERTISE TODAY



timber
& FORESTRY *e*news



Wood
Solutions

BOOST YOUR CUSTOMER BASE

CREATE A FREE SUPPLIER LISTING ON
THE WOODSOLUTIONS WEBSITE

[GET STARTED](#)



Responsible
Wood

2024-25
Community Grants
Program now open
[Learn more.](#)

ALL UNDER ONE ROOF

- ◆ IR SUPPORT
- ◆ TRAINING
- ◆ EMPLOYMENT
- ◆ WHS
- ◆ COMMUNITY



NTHA
NATIONAL TIMBER &
HARDWARE ASSOCIATION

1800 822 621

New Queensland Cabinet sworn in

New Premier Crisafulli has announced his Ministry.

FOLLOWING the LNP victory in the recent Queensland election, new Premier David Crisafulli has announced his Ministry and new ministries, including Victim Support, Home Ownership, Customer Services, Open Data and Integrity.

As part of his statement, the Premier said cost of living, housing and health would be priorities for the Cabinet.

“We will deliver a place to call home for more Queenslanders, with a new Home Ownership portfolio under the Treasurer’s oversight to open the door to a first home for more young Queenslanders,” said Crisafulli.

Timber Queensland, the peak state body for the forest and timber industry in Queensland, has congratulated David Crisafulli and the incoming LNP Government on their election victory and recent announcement of the new Ministry.

Timber Queensland CEO Mick Stephens said, “We have previously briefed LNP Shadow Ministers on the



New Queensland Minister for Primary Industries, Tony Perrett with his wife Michelle at the recent Gympie Music Muster.
Image: courtesy Tony Perrett newsletter

issues and opportunities in the State’s \$4 billion forest and timber industry which contributes essential timber building materials for the housing and construction sector.

“We particularly congratulate Tony Perrett as the Minister for Primary Industries with portfolio responsibility for forestry. As the member for Gympie, Tony has a sound grasp of the sector.

“We also thank and acknowledge the contribution of former ALP member

for Maryborough, Bruce Saunders, who championed the timber industry as a local member and as co-chair of the Parliamentary Friends of the Queensland Forest and Timber Industry.”

As part of its ‘breaking down the barriers to building’

“AS THE MEMBER FOR GYMPIE, TONY HAS A SOUND GRASP OF THE FORESTRY SECTOR

policy, the LNP committed to delivering a landmark Queensland Timber Action Plan to ensure the State has access to the timber required to build one million homes over the next 20 years.

“We are therefore keen to work with the Government on boosting timber supply chains to better meet these building needs,” Stephens said.

The Timber Queensland election policy statement and five point plan for industry growth can be found here.

Key industry priorities to work with Government include:

- resource security for the native hardwood sector;
- new investment drivers for plantations and farm forestry;
- wood processing innovation and supply chain efficiency;
- workforce development and training; and
- indigenous forestry opportunities.

Details on the LNP Cabinet can be found on the Queensland Government website here.

Preserve the Environment, Preserve Timber



Choose a timber preservative that respects our environment and make a difference today.

- Global GreenTag GreenRate™ Level A Certification
- Global GreenTag GoldHEALTH™ Healthrate™ Certification
- MicroPro® preserved timbers are suitable for use in National Parks




www.kopperspc.com.au

1800 088 809

Proponent-led ACCU models

Calls for the Australian Government's new carbon credit scheme to be 'nature positive'.

THE Australian Government last week announced its decision to prioritise four new proponent-led methods for development under the Australian Carbon Credit Unit Scheme (ACCU). Previously, the Australian Government prioritised and developed new methods. Under the new process, anyone will be able to propose new ideas for methods or changes to existing methods and will be responsible for developing those methods.



2

ACCUs are a tradable financial product that incentivises carbon abatement activities through a range of actions from reforestation to energy efficiency. In recent years, the integrity of traditional ACCU methods has come under public questioning regarding their fitness for purpose. In 2022, the former head of the Emissions Reduction Assurance Committee Andrew Macintosh claimed as many as 80% of ACCUs issued by the Clean Energy Regulator were flawed, with problems including that those programs did not actually capture any additional carbon to normal practice, or were doomed to failure or simply did not function in the way their operators allege.

In response, the government launched an independent review (click here for details) and the change to proponent-led methods has come out of the recommendations of that review.



1

1/ **Members of the North Australian Indigenous Land and Sea Alliance at the Reimagining Conservation 2024 Conference in August.** Photo: courtesy NAILSMA
2/ **Dr Bill Jackson, acting president of Forestry Australia, says he is encouraged by feedback on FA's proposed ACCU method.** Photo: supplied

The new methods are improved native forest management in multiple-use public forests,

proposed by the NSW Department of Climate Change, Energy, the Environment and Water; extending savanna fire management to the Northern Arid Zone, proposed by the Indigenous Desert Alliance; Improved avoided clearing of native regrowth, from the Queensland Department of Environment, Science and Innovation; and reducing disturbance of coastal and floodplain wetlands by managing ungulates, proposed by the Northern Australian Indigenous Land and Sea Management Alliance and the University of Queensland. Click here for more details.

The first of these methods involves stopping or slowing down harvesting of publicly owned native forests. Not harvesting the forests for timber or letting them grow older before cutting them down, could enable ACCUs to be issued for storing more carbon.

Forestry Australia is among the industry groups to respond to the announcements, calling on the Australian Government

to ensure that new ACCU Scheme carbon methods developed for managing native forests are truly "nature positive", of high integrity and robustness, and will support the long-term health and resilience of Australian native forests and communities.

"Forestry Australia submitted a strong carbon method proposal for consideration under the Proponent-Led Method Development Process for the ACCU Scheme," said acting president, Dr Bill Jackson.

"At this stage, the Forestry Australia-led proposal has not been prioritised; however, we are very encouraged by the advice from the Emissions Reduction Assurance Committee that our proposal has excellent alignment with the Offsets Integrity Standards and triage criteria and supported it for development, if or when departmental resources permit.

"Forestry Australia remains fully supportive of its proposed new carbon method and is looking forward to engaging with the Australian Government to progress its further development in the near future. Forestry Australia calls on the Australian Government to commit more resources

to the ACCU Scheme and its proponent-led method development process."

Forestry Australia's proposed method, Enhancing Native Forest Resilience, is focussed on improving the health and resilience of native forests and encouraging active, adaptive management of native forests across all land tenures to assist Australia in meeting its Paris Agreement targets.

"Our proposed method is also based on enabling broader participation in the carbon market, which could include State forest management agencies and national parks managers as well as community groups, not-for-profits, private native forest landowners, and First Peoples," Jackson said.

"Forestry Australia's method is based on a growing body of published work that shows forests that are actively managed can have greater carbon sequestration and storage potential.

"The proposal encompasses restorative forestry practices and active forest management focused on improving habitat values, carbon stocks and resilience to droughts and wildfires."

Home building cost rises slow

New data shows the cost of building materials has ceased its inflationary growth.

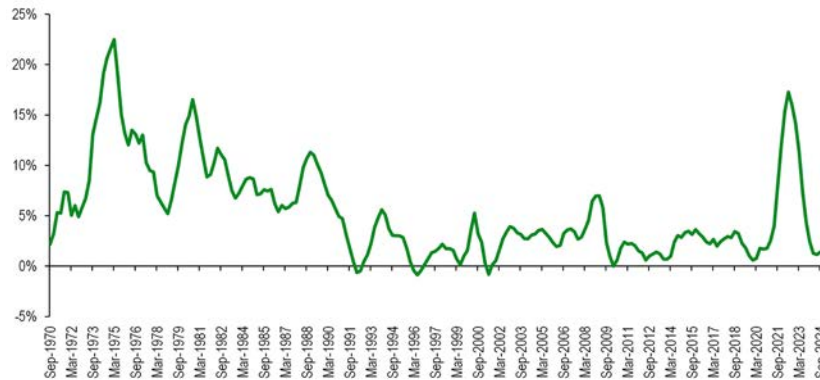
NEW data out from the ABS has provided welcome news to builders, would-be homeowners and economists.

“Prices of home building materials grew by 1.4% in the year to September 2024, significantly slower than other goods and services as measured by CPI,” said HIA economist Maurice Tapang.

The ABS released its Producer Price Index data for the September quarter 2024 last Friday, which provides the latest statistics on input

House Construction Input Price Index, Annual Growth Rate

Source: ABS 6427.0



After spiking during the pandemic, house construction input prices have returned to much better levels of growth. Image: ABS/HIA

prices across different sectors including the home building industry. It also released the Lending Indicators data for the month of September 2024, which provides the latest statistics on housing

finance commitments.

After several years of home building material costs rising rapidly, the news was good.

“Disruptions to global supply chains have largely abated, the volume of home building has slowed and build times are back to pre-pandemic levels,” Tapang said.

“Stable interest rates and construction costs are seeing consumers increasingly engage in new home building. This return of confidence is consistent with the 14.3% rise in lending for new home purchase and construction in the September quarter 2024 compared to the same time in the previous year.

“The rise in activity in the new home segment is increasingly driven by a return of more owner-occupiers to the market as unemployment remains low, and interest rates remain unchanged.”

Materials price increases were recorded in copper pipes and fittings (+15.1%), followed by electrical cable and conduit (+12.9%), electrical equipment (+9.7%), fibrous cement products (+7.3%), and paint and other coatings (+6.5%).

As always, there was notable regional variability. In Sydney, the cost of material inputs for the main contributors to house construction actually dropped by 0.1% for the quarter, led by decreases in the local cost of timber, board and joinery (0.7%), while Melbourne prices bumped up by 0.6% over the same period, thanks to a 5% lift in the cost of electrical equipment.

Similarly, the number of new loans issued varied from an increase of 36.2% in Western Australia year-on-year, with Queensland at +32%, SA 31%, ACT 23.8%, Tasmania +10.3% and NSW +9.4%, while Victoria sat at -0.1% and the NT dropped 9.4%.

“Investors have been also active in building new homes in this cycle amid the shortage of housing, evident in rising rental yields, house prices and increasing activity in the established dwelling market,” said Tapang.

“First home buyers have been very resilient in this cycle, despite the rise in the cash rate. Lending to first home buyers in the September quarter 2024 rose by 7.8% compared to the same time in the previous year.

“As is typical of these cycles, the first to return to market are investors, followed by trade-up owner occupiers, first home buyers and increasingly those building a new home. The leading indicators reinforce the suggestion of an increase in home building activity in late 2024 onwards.”

NTHA CAN

TRAIN AND UPSKILL YOUR EXISTING TEAM MEMBERS

- ✓ Nationally recognised qualifications and training
- ✓ Specialist industry trainers

STRENGTHEN YOUR TEAM

RETAIL, SALES, BUSINESS, SUPPLY CHAIN OPERATION AND LEADERSHIP QUALIFICATIONS

(RTO 5343)
1800 822 621
ntha.com.au

AFCA AGM and events

It's your last chance to nominate or secure tickets.

AFCA has had another strong year supporting forest contractors around the country. This month, the organisation is taking a couple of well-deserved days to focus on itself and members.

On 13 November, the AFCA AGM will be held at the Tramsheds Function Centre, Launceston and streamed on Zoom. Click here for the agenda and minutes of the last AGM. Nominations for the Board of Directors close this Friday (8 November 2024), you can nominate using the official form by clicking here.

As well as the official business, AFCA has four events happening around the AGM. On Wednesday 13 November, there's the Local Showcase at 10.30am, where guests will visit a selectively harvested native forestry coupe and then check out the Midway Tasmania Mill at Bell Bay (don't worry, the schedule will see members back in time for the meeting). After the



The 2022 AFCA Gala Dinner, held in Victoria's Traralgon, was a great event and this year's is set to follow.

AGM, a Welcome Reception sponsored by Randalls Equipment at 5pm will give members a chance to catch up and network. Both events are free, but you must register (click here).

Then on Thursday the 14th, the AFCA Business Summit will run from 8am to 4pm. Industry experts will report on a range of pressing issues facing the sector under the banner

'Owning your future'. With the ever-changing political climate around forestry in Australia, as well as a complex system of local and international

“INDUSTRY EXPERTS WILL REPORT ON A RANGE OF PRESSING ISSUES FACING THE SECTOR

regulatory requirements, the summit will give members a chance to be fully informed about the issues they need to face to succeed. AFCA members receive two free tickets apiece, so it's a good chance to bring along an employee to learn.

Then, armed with information and resolve, members can spend the evening

at the Gala Dinner where the awards ceremony will celebrate outstanding achievement and industry contributions with special guest world champion wood chopper Laurence O'Toole.

To book for the summit and dinner, click here. Members receive a discount on dinner tickets, but guests are also welcome to purchase tickets.



Are you following us on social media?

Please like and share our page so we can get the timber and forestry message out to a bigger audience. If you like our publication, please leave us a review.



2024-25 Community Grants Program applications are now open

Find out more online.



responsiblewood.org.au

Responsible Wood
RW/1-10-1





Business Grants

Access state and/or federal funding to grow your business!

Enews has partnered with a professional grant writing business. Watch this space as not all grants are made public. We will publish grants for various states/

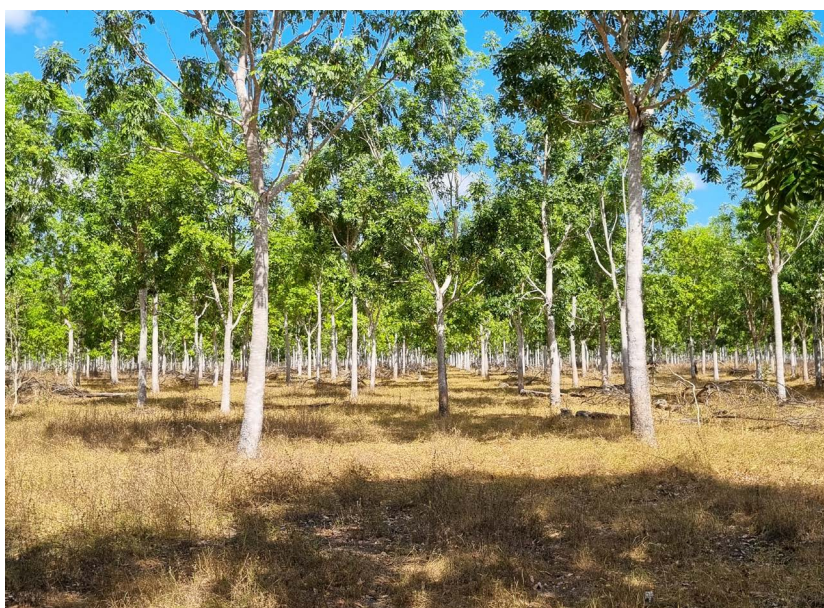
territories for our industry here in Enews. Our connection might be available to assist you with eligibility criteria, grant writing, application process and

lodgement. They have a high success rate, so contact us if you would like to make an appointment. Contact: editors@timberandforestrynews.com

Advanced Manufacturing Ecosystem Fund NT

THE Fund seeks to build the advanced manufacturing ecosystem in the Northern Territory across the Territory's priority sectors. As part of this, it aims to grow advanced manufacturing capabilities in the Northern Territory across the Territory's priority sectors, including by introducing new firms where appropriate, and increase investment in and output of advanced manufacturing activity in Northern Territory, and the number of advanced manufacturing jobs located in the Northern Territory.

The Fund will deliver on these objectives by providing grants to industry led advanced manufacturing projects located in the Northern Territory across the Territory's priority sectors where those projects commercialise new products and processes, including transitioning a new product or process from pilot/prototype stage to full commercial operations; and/or support early stage, small scale and



The grants will help fund manufacture of NT forest products. Photo: FIANT NT

pilot research projects in advanced manufacturing. These grants (minimum of \$25,000) will benefit smaller firms and early-stage research, allowing them to quickly move to larger scale commercialisation.

Funding for businesses will be up to 50% of eligible project costs for grant funding of \$25,000-\$500,000 (although additional funding may be granted to project applications that can demonstrate an outstanding contribution to the NT manufacturing ecosystem).

The grants are targeted at small to medium manufacturing enterprises (SMEs).

Grantees will contribute a minimum of 50% of eligible project costs as cash contributions. Grantees cannot fund their contribution from other Commonwealth, State, Territory, or local government grant source, or use in-kind (non-financial) contributions to match Territory Grant funding. Grantees must provide evidence of their ability to fund their contribution in their application.

Consortia, partnerships, and other joint venture arrangements will be able to apply, however, AMGC must verify that these arrangements are made with NT-based companies and that joint

venture arrangements include at least one SME partner.

To be eligible, you must:

- be an Australian manufacturing enterprise with up to 199 employees
- be undertaking a manufacturing project in the NT that aligns with one or more of the NT Manufacturing Priorities
- have an Australian company number (ACN)
- have an Australian business number (ABN)
- be non-tax-exempt
- be registered for goods and services tax (GST).

For more details, [click here](#).

GRANT DETAILS

Provider: Advanced Manufacturing Growth Centre & NT Government

Amount: Matched funding of between \$25,000 and \$500,000

Closes: 30 June 2026

Location: NT

Who Can Apply:

Australian manufacturing enterprise with up to 199 employees

Co-Contribution Required: Yes

<https://www.amgc.org.au/projects/>

NOVEMBER

13: AFCA AGM – Launceston, Tas - IN PERSON & ONLINE, at 3.00pm. To register visit: https://afcaevents.zohobackstage.com.au/Business_Summit_and_Gala_Dinner2024#/

13-15: AFCA annual Gala dinner & conference – Launceston, Tas. For more information visit <https://www.afca.asn.au/Events/afca-2023-conference-photo-gallery>

20: Forestry Australia Webinar - Rapid detection of fire in Australia's forests – ONLINE EVENT, 12.30-1.45pm (AEDT). For more details and to register, <https://www.forestry.org.au/webinar-fire-detection/>

SAVE THE DATES 2025

MARCH 22: NTHA QLD State Awards – Brisbane City Hall, Brisbane. Join us in celebrating the QLD Timber and Hardware Industry. Contact Tahlia at events@ntha.com.au

MAY 30: NTHA SA/NT/WA State Awards – National Wine Centre, Adelaide. Join us in celebrating the SA, NT & WA Timber and Hardware Industry. Contact Tahlia at events@ntha.com.au

MARCH 25-28: DANA Global Wood Products Supply and Demand Trends Seminar, Global Forest Investment Conference, and WWII Battle of the Bulge Battle sites tour –

Europe. Contact admin@dana.co.nz

MAY 7-8: Sydney Build 25 – ICC, Sydney. Australia's largest construction and design show. Enews is a media partner for Sydney Build 2025. For more details visit <https://www.sydnebuildexpo.com>

MAY 26-30: LIGNA 25 – Hannover, Germany. The world's leading trade fair for woodworking and wood processing plant, machinery and tools. For more details visit <https://www.ligna.de/en/for-visitors>

JUNE 22-26: World Conference on Timber Engineering – Brisbane. WCTE is the world's

leading scientific forum for the presentation of the latest technical and architectural solutions and innovations in timber construction.

OCTOBER 20-22: International Woodchip and Biomass Seminar and Networking Event – Singapore.

OCTOBER 22-23: Melbourne Build 25 – MCEC, Melbourne. Victoria's largest construction and design show. For more details visit <https://melbournebuildexpo.com>

OCTOBER 23-24: Field Trip – Vietnam.

Tas review could mean STT sale

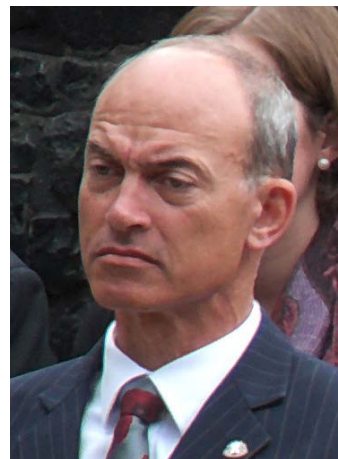
BEFORE the last Tasmanian state election, the Liberal Party promised it would look into claims of inefficiencies and a lack of accountability in some government business enterprises (GBEs) particularly in the wake of the recent Spirit of Tasmania fiasco.

This week, the government has announced sweeping reforms (after a short public consultation period) that include merging and possibly selling off some of the state's GBEs. After previously shunning the privatisation

option, the government's GBE Review and Reform Agenda now includes an assessment of whether public ownership of each business remains appropriate.

Leon Compton, presenter at ABC Radio Hobart, directly asked new Deputy Premier Guy Barnett whether the review included successful GBEs such as Sustainable Timber Tasmania (STT).

Barnett directed listeners to the Treasury website to give their feedback on the



New Tasmanian Deputy Premier Guy Barnett. Image: courtesy Gary Houston CC

proposals by 13 December (click here for the link) but would only commit to not privatising Hydro Tasmania.

"If there needs to be any restructure with any of those [other GBEs], we want to ensure that they focus on building a stronger economy, customer service, improved governance arrangements, fit for purpose and efficient and effective," Barnett told Compton.

Click here for the ABC interview and transcript.

A CUT ABOVE...



Our scope of supply:

- Mobile and stationary chainsaws
- Timber crosscut stations
- Log cutting stations
- Circular saws

- Mechanisation
- Sorting lines
- Scanning and optimising systems
- Special systems

Do you crosscut timber packs at ± 1 mm accuracy?

Or cut structural timber, panel products (MDF & LVL), paper rolls?

Or produce pallet dimensions or studs on fixed lengths?

HOLTEC has a solution for you!

For more information contact:

HOLTEC
YOUR PARTNER FOR THE PERFECT CUT

Ph: +64 9 416 8294 // Fax: +64 9 416 8296
Email: sales@holtec.org // Web: www.holtec.org



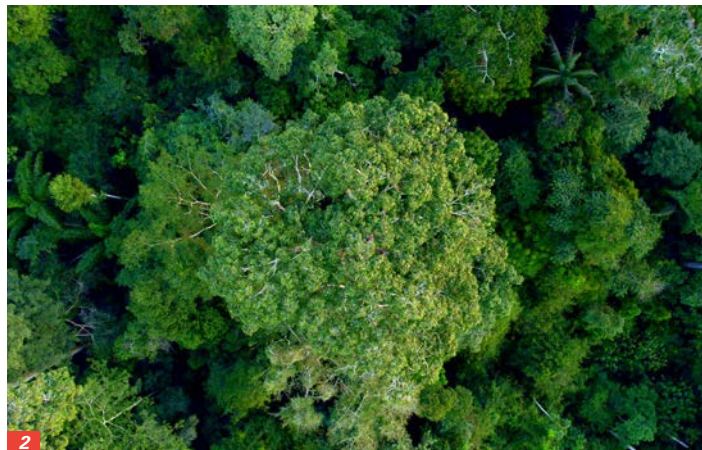
FSC certification biodiversity benefits

Research is proving the value of responsible forest stewardship for biodiversity.

DURING the 2022 United Nations Biodiversity Conference (COP15) in Montreal, Canada, FSC together with WWF and IKEA announced the launch of an initiative to fast-track Biodiversity Assessments in FSC-certified forests. Now, during last week's COP16 in Cali, Colombia, the first results have been shared. These first results indicate promising initial research into the benefits of responsible forest stewardship for biodiversity, taking a further step in demonstrating the value of forest biodiversity and contributing to the delivery of the post-2020 Global Biodiversity Framework.

Monitoring and assessing the impacts of human activities on forests and conservation initiatives is increasingly important. FSC certification has a crucial role in maintaining biodiversity across the globe by protecting rare and threatened species and their habitats as required by FSC standards. Eighty percent of global terrestrial biodiversity is found in the world's forests. Thus, evaluating the outcomes of FSC certification is essential to allow insight-driven improvements of Forest Stewardship Standards (FSS) and be able to communicate the positive outcomes of responsible forest stewardship. This is important for FSC to remain relevant

“INITIAL RESULTS SHOW PROMISING INDICATIONS OF POSITIVE IMPACT”



1/ **FSC certification in Finland was actively linked to an increase in conservation.** Photo © FSC IC/Milan Reška

2/ **FSC-certified forest in Brasil, where multiple threatened species were observed.** Photo © FSC Brasil/Célio Cavalcante Filho

and credible in a changing market where substantiating sustainability impacts is increasingly needed.

However, data about this impact is not systematically available. In fact, global biodiversity data is insufficient, not comparable, and, most importantly, does not aim to capture the actual value of nature in society.

For this reason, FSC worked with partners including IKEA, Tetra Pak, UPM, Kingfisher, SCA, Essity, and WWF International, to enhance the understanding and monitoring of the effects

of FSC certification on biodiversity in Brazil, Finland and Sweden.

The project, which generally aims to enhance the understanding and monitoring of the effects of FSC certification on biodiversity, has two main phases/objectives:

1. To evaluate the biodiversity value associated with FSC forest management certification.
2. To advance in the development of a standardised and robust monitoring framework for

forest biodiversity as part of FSC certification.

FIRST PHASE COMPLETED: WHAT WAS FOUND?

Brazil, Finland and Sweden were chosen as the focal countries for phase one and the research involved both local consultants and researchers with strong expertise in biodiversity and forest management, and a market perspective, thanks to the participation of various market actors steering the project.

In each country, local consultants sought insights into the monitoring, management and conservation of biodiversity associated with FSC certification through exploring:

- the added value of FSC requirements as compared to national legislation. This involved a desk-based comparison of the FSC's Forest Stewardship Standards (FSS) with national law to identify areas where FSC requirements are more stringent and could generate added value (i.e. impact) for biodiversity on the ground.
- how certificate holders conduct their monitoring activities. This involved assessing the current monitoring efforts by FM certificate holders to better understand the activities conducted and their motivation, whether and which data are collected and the methods and tools used for data collection.

Cont P 9

From P 8

• Biodiversity value using available data related to biodiversity. Readily available biodiversity data was compiled and analysed to derive insights about biodiversity value in FSC-certified forests. Using the readily available data was faster than conducting new field data collection, but meant the data compiled and methodological approaches taken in the three countries differ, and the results are not aimed to be compared. Instead, these differences shed light on possible and complementary methods to evaluate biodiversity outcomes in FSC-certified forests.

Evidence from the first phase shows a promising indication that FSC Forest Management certification contributes to biodiversity conservation, including

rare, threatened, and endangered species, in Brazil, Finland, and Sweden. Notably, within the scope of the project:

- Over 300 threatened species, including endangered primates, reptiles, plants, birds, and large mammals, have been identified in Brazilian FSC-certified plantations and their set-asides.
- Over 9% (7000 hectares) of all the FSC-certified forests evaluated are designed for conservation as a result from FSC Forest Management certification in Finland.
- The probability of occurrence of 19 key forest indicators and red-listed species has remained stable in FSC-certified forests in Sweden



Rare and threatened species such as the White-backed Woodpecker (*Dendrocopos leucotos*) have been found in Finnish FSC-certified forests. Photo: Petteri Lehikoinen/CC

over the past 20 years.

- FSC-attributable set-aside areas enhance forest connectivity in Brazilian and Finnish landscapes.

You can read through the full FSC story on the results of the first phase by clicking here.

Andrei Shchegolev, WWF global forest certification lead, said, "Responsible forest management certification is a key solution that benefits both nature and people. It's

important that we improve global understanding and monitoring of impacts of FSC-certification on biodiversity. Initial results show promising indications of positive impact, but significant limitations in the data point to clear improvements needed.

"The release of these results at COP16 offers a renewed commitment to ensuring FSC remains fit for purpose and continues to catalyse private sector leadership towards a net zero and nature-positive future."

On the cover: Swedish forests with FSC certification showed better habitat restoration and nature value assessments, among other certification benefits.
Photo: © FSC/Bablu Singh

**Renewable.
Sustainable.
Reliable.**

P: 07 3147 8790
E. sales@vidawood.com



New tracing methodology shows results

RESEARCH soon to be published in the December 2024 of *Trees, Forests and People* journal describes a new Brazilian methodology for tracing the origins of a highly valuable but threatened local tree.

Ipê is a highly valued hardwood renowned for its exceptional resistance and durability, comprising around one hundred species. Many of these are slow-growing and have been over-exploited.

Although some Ipê populations are available for harvesting, investigations between 2009 and 2019 showed that approximately 80% of the Ipê timber sold as legal in the state of Pará had false, invalid, or discrepant authorisations. Fraudulent documentation is a major problem for export timbers, too.

A team of scientists led by Gabriel R Moreira from the Nuclear Energy Center for Agriculture at University of São Paulo (CENA-USP), posited that the use of a multi-element profile for Ipê would allow researchers to accurately and specifically identify whether Ipê timber being sold came from legal or illegal species. This task is difficult to accomplish visually.

The team identified strontium as a pivotal element for discriminating species, followed by barium, samarium, lanthanum, cerium and bromine. Prominent and consistent variations,



The scientists plan to create a large database with both isotopic and chemical information to improve the precision of the timber tracking system. Photo: courtesy of Edmar Mazzi/CENA-USP

particularly of strontium, were noted between species.

Moreira told US conservation portal Mongabay that the ultimate goal is to use this technique to find the geographical origin of the

timber, since the chemical signature in each sample differs according to the kind of soil the tree grew in. The idea is especially promising in a country like Brazil with a vast array of soils.

“The plan is to use this large mosaic of soil composition to try to attribute the variability of the soil to the variability of the woods that have grown in these particular regions,”

Moreira said.

[Click here to read *Elemental profile of Ipê species to support timber tracing in Amazon Rainforest* or click here to read the full Mongabay story.](#)

Job position to fill?

For as little as A\$10.00 per week, you can advertise your positions vacant on our dedicated eNews jobs web page.

Job ad: A\$30.00 for 3 weeks

Prices exclude GST.

[CLICK TO ADVERTISE](#)

timber
& FORESTRY *e*news

Contact Campbell McInnes at
campbellm@timberandforestrynews.com



Image: Freepik

WA timber towns turn to TV

AFTER WA's decision to end native forestry, a lot of regional West Australians have been looking for ways to fill the economic holes left in their community.

One of the more creative is that being undertaken by the Southern Forest Food Council, which secured funding through the state government's Native Forestry Transition Community Small Grants Fund.

Laura Bolitho is the general manager of the food council, a not-for-profit organisation that works to represent local farmers and agribusinesses in the Southern Forest region.

"We're in the process of



1



2

1/ This was a major timber region before the WA native forestry ban.
2/ One of the Southern Forest Food Council families involved in the project. Images: courtesy SFFC

transitioning through the closure to the native forestry program, it was a major industry in our area," she told the ABC.

"So now we've got development funding to create either a documentary or TV series and then film a pilot. These grants are opportunities to bring some vibrancy back into our community."

The project is rooted in the

local community, with a large proportion of the production team hailing from the region and locals being heavily involved at every stage from story development to filming – one farmer even pulled out his family's plastic toy collection to help attendees at a recent writers' workshop visualise the ideas they were storyboarding.

Once the pilot is completed, the team will pitch it to

marketplace partners in hopes of securing funding for a full series production and distribution. As importantly, they hope to bring the real stories of an agricultural community to a broader audience, showing the

impacts of choices that are often made in the cities – from what to buy in the supermarkets to which lobbying group to listen to in the parliaments – on country people.

Click here to read the full ABC story and click here to learn more about the documentary and Southern Forest Food Council.

Source: ABC

arxada

IS IT SAFE TO USE PRESERVATIVE - TREATED WOOD FOR MY RAISED GARDEN BED?

Yes!

TANALITH® E Copper Azole treated timber is safe to use around fruit and vegetables!

TRUST

Tanalised®

Ecowood®

PROVEN WOOD PROTECTION

Tanalised, Tanalith, & Ecowood are registered trademarks of Arxada @ 2023

From woodchip to structural timber

Victorian trial delivers high-strength glulam from blue gum.

BLUE gum is a widely grown plantation species that has historically been used as a fibre source for low-value manufacture. But a team centred on Victoria's Warrnambool has created a new engineered wood product from blue gum that is set to change that story.

Putting blue gum through traditional sawmills has not had great success in the past. The timber is prone to bending and twisting while being cut and then also while drying.

The team sought to combat those problems with a new approach: the timbers were carefully sawn and dried, then imperfections were cut out of the lengths and the remaining pieces were glued and finger-jointed into laminates. A two-year trial has finessed the process and tested the results, with the final product being blue gum GL18, a high-strength, high-value EWP that's suitable for products including beams and joists.

Funded by a Federal Government grant in 2022, the 'Splinters to Structures' project has been driven by the Green Triangle Forest Industries Hub, Forest and Wood Products Australia and the Australian Forest Products Association, working in partnership with WTIBeam (formerly known as Warrnambool Timber Industries).

Laurie Hien, deputy chair of the Green Triangle Forest Industries Hub, told Victorian Country Hour last week, "What makes it unique is that it's a product that has been constructed from Tasmanian blue gum, *Eucalyptus globulus*, that has traditionally only been used for chip/paper manufacturing and some



clothing and associated product. And all of that product has been exported to date.

"This exciting new engineered wood product gives the opportunity for us to be able to use some of that plantation estate for the manufacturing of an EWP that can be used in both domestic and commercial builds."

The product was designed in response to the loss of the Chinese market for woodchips in 2021 and an urgent need to find new markets, but as events played out, it was ideally positioned to answer the shutdown of native timber forestry in Victoria. Industry partner WTIBeam has long sold a hardwood-derived GL18 to local builders, but its local supply of hardwood fibre ended with the closure of VicForests.

"We saw an opportunity to fill that void" said Hein, noting that it gave the plantation growers an extra value option through the supply chain.

Based on the trials, the end product is considered very stable and strong, with an expected service life comparable to other GL18 products on the market.

"We do believe, based on the trials thus far, that commercialisation and scaling of this product is realistic," Hein said, estimating that manufacture in southwest Victoria could begin shortly.

"The product's contribution to meeting Australia's future needs is really going to underpin the scaling that is necessary in development and production of this product. So therefore, we will see a modest start and look to grow the product commercially right across this country, though that will take some time," he said.

Hein pointed out that the current economic and planning environment was supportive of new product: in previous years Australian innovation in EWP has been driven by exports, but now

domestic needs are significant and will help to stabilise and underpin the market, making it easier and more rewarding to develop new products and create high value while meeting the demand needs for both residential and commercial building in Australia.

The same trial also looked at peeling blue gum for use as LVL veneers, which has so far delivered high MOE results if only D-grade visual quality.

Green Triangle Forest Industries Hub CEO Tony Wright told Timberbiz that the trials represent a practical pathway to raising the amount of local timber in the built environment without creating social licence issues.

"The outcome for the sector is reduced reliance on exports, the creation of new local jobs and a cost-effective building material with a positive carbon outcome that can fix a shortfall in the domestic market," he said.



1/ Blue gums have historically been grown for low-value manufacture such as paper. Photo: Ian Brooker and David Kleinig/CC

2/ Member for Western Victoria Jacinta Ermacora, Minister for Jobs and Industry Natalie Hutchins, WTIBeam owners Jason and Edwina Vulcz and Green Triangle Forest Industries Hub CEO Tony Wright with the new GL18 product. Photo: supplied

KOMATSU

Komatsu 895.2

SpeedShift



New Intelligent Transmissions for Increased Productivity

The new Komatsu 895.2 Forwarder offers increased productivity with two unique transmission options;

- SpeedShift ... gear change "on the fly" with high 262 kN torque
- Xtreme ... severe/steep conditions with very high 307 kN torque
- New Maxi XT Control System

Komatsu Forwarders lead the way in production

KOMATSU
Creating value together

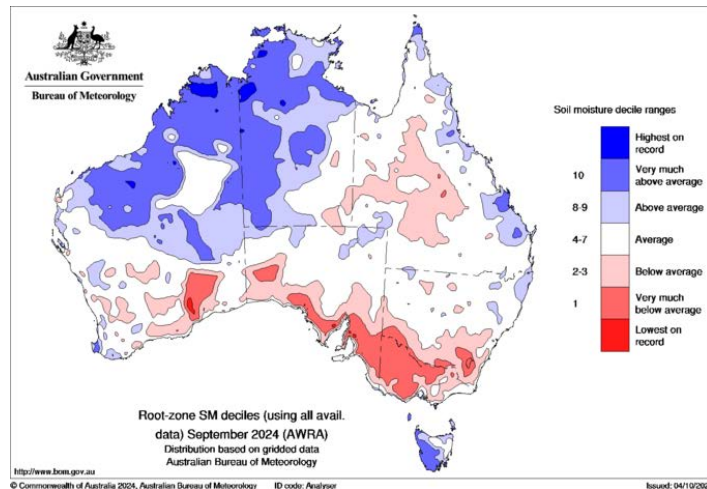
Komatsu Forest Pty Ltd.
11/4 Avenue of Americas
Newington NSW 2127 Australia
T: +61 2 9647 3600
E: info.au@komatsuforest.com

Victorian foresters brace for dire fire season

THE Victorian Forest Products Association (VFPA) has warned the outlook for the fire season in Victoria, particularly in western Victoria, is looking particularly dire, with record low rainfall and low soil moisture readings creating ideal conditions for bushfires.

“All the Bureau of Meteorology’s predictors in the western part of Victoria are showing a drier than usual lead up to the fire season, with soil moisture low, and a high fuel load ringing alarm bells for the next few months,” said Andrew White, CEO of the VFPA.

“Record low rainfall in the western part of Victoria combined with dry conditions



BOM data shows below average soil moisture in the southern mainland.

in winter, means we have a ‘green drought’ in some areas, where the risk to our plantations and Victoria’s vital timber assets used to build

new homes and create export income for local communities is extremely high.”

White warned that while

fire cameras are valuable early detection tools, there were still blind spots thanks to lack of funding.

“The forestry industry has funded its own specialist brigades which have already been actively working with DEECA and the CFA to conduct prescribed burns and preparative activities that will help protect the local community, as well as these vital community assets,” White said.

“Last season, the AI-powered fire cameras operated by the Green Triangle Fire Alliance detected 40 unplanned fires – 21 on private land, 11 on public, and 8 in plantations.”

Cultural burns lowered past Australian bushfire risks

ANCIENT cultural burning practices carried out by Indigenous Australians limited fuel availability and prevented high intensity fires in southeastern Australia for thousands of years, according to new research from The Australian National University (ANU) and the University of Nottingham.

The research, published in *Science* (click here to read), highlights how the intensity of forest fires in fire-prone southeastern Australia decreased over time alongside an increase in Indigenous populations in the area.

Dr Simon Connor from ANU said a better understanding of the link between human-induced climate change and the projected rise in the frequency and intensity of forest fires will lead to improved forest management and conservation in Australia.

“We often think about forests and woodlands in terms of trees, but this

research shows that some of the biggest changes have happened not in the tree canopy but in the shrub layer. That’s something we weren’t expecting to find,” he said.

“Indigenous peoples have shaped Australian landscapes over tens of thousands of years. They did this through cultural practices. We need to keep that in mind when we’re thinking of the best way to live in the Australian environment.”

Using tiny fossils preserved in ancient sediment, the research team reconstructed ancient landscapes across southeastern Australia to understand how the vegetation has changed over time.

The researchers focused on the shrub layer because this is what allows flames to climb from the ground to the canopy,



Cultural burns are cool burns that do not escape into the canopy.
Photo: FIRE LORE (www.firelore.earth), CC BY

leading to high intensity fires.

The team then compared this with archaeological data to analyse how human activity has impacted levels of shrub cover in Australian landscapes over time.

Lead researcher Dr Michela Mariani, from the University of Nottingham, said the expansion of Indigenous populations and a subsequent increase in the use of cultural burning led to a 50% decrease in shrub cover, which in turn led to a decline in high

intensity fires.

“The shrub layer in forests can often act as ladders for wildfires to climb up to tree canopies and spread,” Dr Mariani said.

“Following British colonisation and extensive fire suppression, shrub cover in Australia has increased to the highest ever

recorded, which significantly increases the risk of high intensity fires in the future.

“Australia’s fire crisis can be tamed with the involvement of Indigenous practitioners in fire management. It’s important to rekindle ancient cultural burning practices together with Traditional Owners to reduce the risk of catastrophic blazes.”

This work also involved researchers from the University of Melbourne, Monash University and the University of Tasmania.

Feral deer eradication program hits milestone

DEER are a significant problem in agricultural regions across Australia. For foresters, they not only eat saplings and damage soils, but they can also destroy fencing, create a risk to workers and encourage trespass by illegal recreational hunters/poachers.

South Australia's feral deer eradication program has recently hit a milestone of removing more than 20,000 deer from across the state. When the 10-year statewide eradication program commenced in May 2022, there was an estimated 40,000 feral deer.

The cost to South Australian producers is an estimated \$36 million in annual productivity losses. The removal of 20,000 feral deer is the equivalent of removing more than 30,000 sheep in grazing pressure from the state's pastures, crops, and native vegetation.

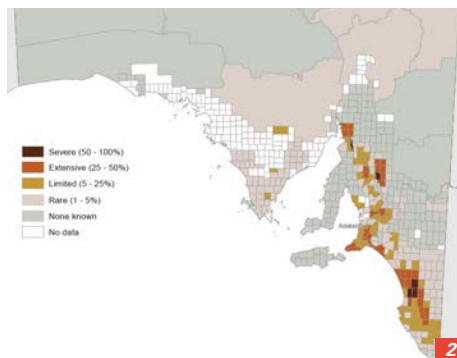
However, local invasive species experts warn that the number of deer culled per annum may need to double if the program was to outweigh annual breeding numbers.

Invasive Species Council advocacy director Jack Gough told the ABC that deer numbers increased by 35-50% a year, meaning that to really "crash the population" the removal rate needed to double.

"So if there were 40,000 two years ago, you need to be removing in the order of 15,000 a year just to keep the population stable," Gough said.

"The numbers always have to be related to the population growth because, otherwise, you basically just end up sustainably harvesting the population.

"None of this should be seen as criticism. What the



1/ Thermal aerial culls are conducted from helicopters with a thermal camera operator (bottom left) relaying information to the pilot and two shooters.

2/ Map of feral deer presence across South Australia in 2021 showing spread increasing by about 5%/five years. Images: SA Gov Strategic Plan for the South Australian Feral Deer Eradication Program

SA government is proposing is nation-leading and is super exciting and the commitment

they're showing is huge. They need some significant funding."

The current eradication program is jointly funded by the Australian and South Australian Governments, SA Landscape Boards, and the livestock industry and there are concerns that the \$14 million budgeted funding will run out mid-2025.

Unlike the Eastern states, deer numbers in South Australia are at a level where eradication is a realistic target.

[Click here to read the full ABC interview with Gough.](#)

Sustainable cooling

AS we head into a hot summer, one ceiling fan has gone the extra yards on sustainability. Fanco's Gaia Fan has recently won a prestigious Australian Good Design Award, in no small part due to the fact that each blade is constructed from 100% FSC-Certified poplar timbers.

"Our goal has always been to create ceiling fans that push the limits of design, and with the Gaia Fan, we're taking big steps toward a greener future," said Julia Kahan, general manager of Fanco.

"We've integrated environmentally conscious materials in addition to an energy efficient motor without compromising the performance, style, or durability



The Gaia ceiling fan has FSC-certified timber blades. Image: Niche Group

our customers love. Winning the Good Design Award for the Gaia Fan is a huge honour and shows that our hard work in creating sustainable, innovative products is making a real difference."

To complement the certified timbers, the fan's motor housing is made from bio-based plastic that includes 25% renewable materials, helping reduce the use of fossil fuels and making the production process more

environmentally friendly. Additionally, the DC motor is energy efficient and the fan uses non-toxic, water-based coatings, which help maintain cleaner indoor air quality.

Family-owned Melbourne firm Fanco has taken up sustainability as a goal: "We wanted to move beyond just offering energy-efficient products; we aimed to understand the broader environmental impact of the materials and manufacturing processes used. This approach allowed us to make more informed decisions and design a product that reflects our commitment to sustainability," said Kahan.

For more information, [click here.](#)

A tale of two sectors

New research shows different experiences for women in construction and forestry.

THE construction industry has been worried about a shortage of workers for years now. New research this week from E1, Australia's leading commercial construction networking company, shows that a third of commercial construction firms are currently struggling to recruit new talent due to the widespread shortage of workers and nearly 20% of commercial construction workers feel overwhelmed by their current workload.

But, as shown in the recent Not-So-Little Things Affecting Women in Construction report, some parts of the sector are alienating half of their potential workforce and leading to nearly 1 in 10 women leaving the industry due to harassment at work.

The report is based on a survey of over 654 women in construction by equality consultancy TDC Global and The National Association of Women In Construction (NAWIC). It looked at the impact of microaggressions on women currently in construction with the aim of helping organisations better address the issue.

Microaggressions sound trivial, but they aren't. They're acts that make people feel less welcome and less safe, including things that might escape the notice of some colleagues, such as no toilets or sanitary facilities for women on site, women being excluded from discussions and being talked over in meetings. They also include more obvious problems such as female employees being made the scapegoats for poor male management decisions,



Carpenter Naomi Cassimatis at work. Photo: courtesy NAWIC

lack of promotion for women, touching women in the workplace – and writing it off as 'friendly', and bullying.

These microaggressions were anything but rare: 93% of respondents said they had had their ideas taken for granted or credit given to someone else, while 94% of respondents noticed disparities in the distribution of opportunities and resources available to them compared to their male colleagues.

You can download the whole report from Google Drive by clicking here.

This research isn't an outlier in its results. Last week, the NSW Government released results from its annual Women in Construction survey, which showed the many issues women were having moving into employment in the sector.

Surveying over 1000 NSW construction workers and businesses, the most concerning statistics were that 69% of women reported some form of gender-based

discrimination in the past year, and 33% experienced workplace sexual harassment.

Other findings included some positive findings: the number of women entering the industry has risen by 12.5% in the past year and, of the businesses surveyed, women now make up 20% of the construction workforce.

An important point to recall is that improving gender balances and conditions in workplaces doesn't only benefit women. Multiple studies have shown that gender-diverse workplaces have better productivity, profitability and innovation (the same benefits are found with diverse ethnicities in workplaces).

Having more women in workplaces also increases the focus on issues

“WOMEN ENTERING CONSTRUCTION IN NSW HAS RISEN BY 12.5% IN THE PAST YEAR

including caring responsibilities and training. Key challenges identified by both men and women in the NSW survey include a lack of work-life balance (62%), lack of flexible working hours (51%), and insufficient mentoring and leadership training (47%).

You can see the full results and read more about the NSW Government Women in Construction program by clicking here.

COMPARE THE PAIR

To an outsider, it might be assumed that forestry and construction would have similar issues, as both are male-dominated industries. However, the forestry sector has been actively lifting the participation of women for decades and has a far more representative gender balance across all levels from leadership to out in the field, rather than concentrating women in the lower-paid roles.

While there is not a huge difference in the percentage of women forestry workers compared to construction (about 25% versus 20%), there is a big difference elsewhere. Pay is the most obvious: the most recent Workplace Gender Equality Agency Industry Snapshot still shows a gender pay gap for both sectors, but in agriculture,



Participants and trainers at a recent Girls on Fire camp. Photo: courtesy Forestry Corporation

From P 16

forestry and fishing, it's 7.2% on the median base salary, compared to 25.2% in construction. In agriculture, forestry and fishing, 23.2% of the upper pay quartile are women, while only 11.5% are in construction.

While the WGEA data groups forestry into a broader sector, we can see that women in forestry are at least as well represented as the data suggests in leadership positions, with some groups, including Forestry Corporation, at or near gender parity in their executive teams.

That hasn't happened by accident. A commitment to creating inclusive teams and developing recruitment through engagement with role models has been a vital part of the changing face of forestry.

This includes reaching out to young people and showing the possibilities for future careers in the forest sectors.

One such program is the 'Fire Up Girls' Fire and Resilience Program, run by not-for-profit organisation Girls On Fire delivering fire and disaster management training to women aged 15 to 19 years. The program is partnered by Forestry Corporation.

Fire camps have been staged in Tenterfield, Casino, Lismore and Moree with camps to follow in Dubbo,

Eden, Cobargo, Jindabyne and Tumut.

Founded by Fire and Rescue NSW Fire Captain Bronnie Mackintosh, Girls on Fire aims to increase diversity and build resilience within emergency services.

"By giving young women these real-world skills today, we are preparing them to be tomorrow's emergency services personnel and community leaders," Mackintosh said.

"These camps help young women discover just how capable they are. By challenging themselves with fire and emergency scenarios, they walk away with the confidence to tackle anything," she said.

It's another field where women are currently under-represented: statistics show women make up only 5-7% of Australia's firefighting workforce.

Forestry Corporation's Amba Addinsall said the organisation, as one of NSW's four firefighting agencies, is proud of its gender diversity on the firelines.

"This summer Forestry Corporation will have 519 firefighters rostered on to respond to the state's forest fires and, proudly, around 20% of our firefighting workforce are women," Addinsall said.

Mentoring the girls is also a positive experience for the workers.

"Volunteering for the day

camps was an incredibly rewarding experience. It was so inspiring to see the girls grow in confidence throughout the day, form social connections and experience the camaraderie of working together in simulated emergency situations," said Forestry Corporation's Tamara Reinhard.

"Feedback from the girls was that the activities were fun, informative and exhilarating. They enjoyed using the live reel on the Cat 9 and the hands-on approach to the day. If you get the chance to participate in these day camps, as a volunteer or a student, we highly recommend you sign up – it's a great day out," agreed colleague Renee Lawlor.

The Fire-Up Girls Fire and Resilience Program is free to participants and has received funding through a NSW Government Investing in Women grant. All young women are welcome to attend. Camps will be held in Dubbo on November 7, Eden on November 18, Cobargo on November 19, Jindabyne on November 21 and Tumut on November 27.

For more information go to girlsonfire.com.au

While there is still a way to go for gender equality in forestry, it's clear that the work already done shows both a pathway for the construction sector to improve, and the positive results of taking that road.



Timber & Forestry enews an authoritative and rapid deliverer of news and special features to the timber and forest-based industries in Australia, New Zealand and internationally. *Enews* is delivered weekly, every Thursday, 48 weeks of the year. Advertising rates are competitive with other industry publications. *Timber & Forestry Enews* hits your target market – every week, every Thursday!

HEAD OFFICE

Timber Media Australasia Pty Ltd
PO Box 3001
Maraylya NSW 2765

PUBLISHER

Timber Media Australasia Pty Ltd

EDITORS

Nicky Ainley
Donyale Harrison
Jess Hockridge
editors@timberandforestryenews.com

ADVERTISING

Campbell McInnes // +61 (0) 406 223 007
campbellm@timberandforestryenews.com

ACCOUNTS

Chris Parker // +61 (0) 413 710 203
cparker@ttnews.com.au

SUBSCRIBE

www.timberandforestryenews.com



The information contained in this publication has been obtained from sources assumed to be reliable. However, the publishers disclaim all warranties as to the accuracy, completeness, reliability or adequacy of the information displayed. Opinions expressed in Timber & Forestry enews are not necessarily those of directors or the Timber & Forestry enews team. We do not accept responsibility for any damage resulting from inaccuracies in editorial or advertising. The publishers are therefore indemnified against all actions, suits, claims or damages resulting from content in this publication.

CLASSIFIED ADVERTISING

EMPLOYMENT

ADVERTISING PACKAGES

PRODUCTS & SERVICES

LATEST JOBS:

- Account Manager
- Business Development Manager

Click to apply

Click this link
to advertise
online...

PACKAGES:

Click this link
to learn about
advertising
packages...

BUY AND SELL -

New and Used
Machinery/Equipment

Click this link
to advertise
here & online...

ADVERTISING RATES

DISPLAY AD RATES

FULL PAGE: \$540

297mmH x 210 mmW

HALF PAGE: \$320

Vertical • 256mmH x 93mmW
Horizontal • 125mmH x 190mmW

THIRD PAGE: \$240

Horizontal • 73mmH x 190mmW

QUARTER PAGE: \$210

Vertical • 125mmH x 93mmW
Horizontal • 63mmH x 190mmW

BANNER ADVERTISING PACKAGES

• PREMIUM PACKAGE:

FRONT PAGE publication module, email and website modules

- Front page module • 68mmW x 45mmH
- Top email banner • 1200pxW x 145pxH
- Home page website banner • 1000pxW x 120pxH

• STANDARD PACKAGE:

PAGE 6 (or similar) module, email newsletter and website module

- Module • 93mmW x 63mmH
- Email module • 336pxW x 336pxH
- Website module • 720pxW x 744pxH

CLASSIFIED ADVERTISING

JOB / BUY & SELL ADS: ONLINE & IN PUBLICATION

720pxW x 744pxH

TERM DISCOUNTS

12 WEEKS: 7.5%

24 WEEKS: 10%

48 WEEKS: 15%

All pricing is excluding GST and based on a weekly booking. Overseas bookings are exempt from GST.

DEADLINES

Display ads: Book by 9.00am Tuesday prior to publication.

Supplied artwork: 12noon Tuesday prior to publication.

Supply hi-res jpg or pdf to our specifications. This is a digital publication, therefore **NO crop marks or bleed is required.**

Classified advertising: JOB ADS ARE COMPLETED ONLINE.

Go to www.timberandforestrynews.com/post-a-job/ to place a job vacancy. **Book by 12noon Tuesday prior to publication.** Job ads are for individual positions. If more than one position is to be advertised, separate ads will need to be created and advertised accordingly.

BUY & SELL ADS ARE COMPLETED ONLINE. Go to www.timberandforestrynews.com/product/buy-sell-advertisement/ to place an ad. **Book by 12noon Tuesday prior to publication.**

PAYMENT TERMS

New clients invoiced on booking. Existing clients 14 days. All other standard Terms & Conditions apply.

CONTACTS

Media releases and editorial:

Nicky Ainley // Donyale Harrison // Jessica Hockridge
e: editors@timberandforestrynews.com

Display ad bookings:

Campbell McInnes // e: campbellm@timberandforestrynews.com

Accounts:

Chris Parker // e: cparker@ttnews.com.au

Have some news to share?

Send media releases, news stories, events, any timber and forestry news related information with us anytime to Nicky, Donyale and Jess -

editors@timberandforestrynews.com

timber
& FORESTRY *e*NEWS

Contact Nicky,
Donyale or Jess today...