

FOR OVER
18 YEARS
DELIVERED
WEEKLY TO
15,200
GLOBAL
READERS

Like and
follow us on



ISSUE 842 // March 20 2025

timber & FORESTRY *e*news

AFFPA fights forestry misinformation this election

COVER STORY P 2



JOB:

- Silviculture Forester
- Senior Harvest Forester
- Chief Executive Officer
 - Account Manager
- Business Development Manager
 - Trade Account Manager
 - Customer Service Representative

[Click to apply](#)

1075C

**UNMATCHED
PRODUCTIVITY.
UNMATCHED
RELIABILITY.**



Tigercat

*Do you
have
a job
position
to fill?*

ADVERTISE TODAY



Responsible
Wood RW-140-H

Learn about
Responsible Wood
certification.
Read the latest
Annual Report online.

**ALL UNDER
ONE ROOF**

- ◆ IR SUPPORT
- ◆ TRAINING
- ◆ EMPLOYMENT
- ◆ WHS
- ◆ COMMUNITY



NTHA
NATIONAL TIMBER &
HARDWARE ASSOCIATION

1800 822 621

AFPA launches next phase of Federal election campaign

Australian Timber. Australia's Future.

THE Australian Forest Products Association (AFPA) has launched the next stages of its 2025 Federal Election Campaign following the release of the comprehensive *Australian Timber. Australia's Future* Election Policy Platform in February – which outlines what the national forestry sector and supply chain requires to realise its potential for the national economy, consumers, jobs, the environment and fighting climate change, AFPA Chief Executive Officer, Diana Hallam said.

“The AFPA team has been busy promoting our Platform, which includes key policy and funding requests, to policy and decision makers across all sides of federal politics over the past few weeks. It's now time to launch the next stages of our campaign to support our Platform,” Diana Hallam said.

AFPA has launched:

- **forestfacts.com.au** – a new website dedicated to countering the disinformation being



AFPA launches forestfacts.com.au to counter disinformation about Australia's sustainable forestry sector. Image: AFPA – Forestfacts website

irresponsibly spread about the forestry sector.

- **New Billboards** – to support the campaign in key forestry battleground electorates, including in Tasmania.

The forestfacts website not

only outlines the AFPA's desire for truth but actually provides it in an easy-to-understand way. At the launch there are 15 forest facts seriously (FFS) provided that clearly articulate the truth of key forestry matters and dispel disinformation.

AFPA has also provided links to solid, reputable sources that back up the truth of forestry. Their sources include the UN FAO, the Australian Government, ABARES statistics, scientific journals and more.

“There is a huge amount of

disinformation being spread by activists about Australia's sustainable and world leading forestry sector. The idea behind forestfacts.com.au is that people interested in the truth about how Australian forestry operates can have somewhere to go to have myths dispelled and find further scientific information, as well as a basic overview of industry,” Diana Hallam said.

“The Billboards running ahead of the Federal Election show the importance of the timber and forestry industry for homes. They have been placed in strategic locations to maximise public and political awareness of the importance of the full supply chain of Australia's forestry sector.

“AFPA will continue to execute our Federal Election campaign ahead of polling day and work to get all sides of federal politics committed to our Platform,” Diana Hallam concluded.

On the cover: Billboards are just one of the ways AFPA is spreading the message: Australian timber is Australia's future. Image: AFPA

Preserve your Project, Preserve Timber

Choose a timber preservative with colour to set your project application apart.

- Micronised pigment technology
- Enhances timber grain
- A combination of Micropro's attributes with the added benefit of long lasting colour

www.kopperspc.com.au
1800 088 809

Sydney Build Expo has official support from NSW Premier

SYDNEY Build is proud to have the official support of the Premier of NSW. Chris Minns MP invites the industry to attend the nation's largest construction, architecture, and infrastructure show on May 7-8.

Don't miss key government announcements and updates from top speakers over the two days and discover the latest developments and project opportunities across both local and international Government Hubs.

WHAT'S ON AT SYDNEY BUILD?

- **25,000+ attendees** from leading contractors, architects, civil engineers, developers, councils, housebuilders and construction professionals
- **550+ incredible speakers** across 15 conference stages including Architecture & Design, Future Australia, MMC, Digital Construction, Sustainability, D&I and more
- **Architect's Hub** with project displays and 3D models of upcoming projects from leading architects
- **CPD training workshops** and education
- Australia's biggest Festival of Construction with DJs, musicians, live performances, celebrity guests, entertainment and competitions
- **Meet the Buyers** with Procurement Teams exhibiting from top contractors
- **Government Hub** showcasing opportunities and planning across Australia
- **Exclusive networking events** co-hosted with leading industry bodies
- Australia's largest networking events for **Women in Construction** and Diversity in Construction
- An inclusive **Ambassador Program** supporting Women in Construction, Diversity

in Construction and Mental Health in Construction

- **600+ exhibitors** showcasing the latest services, products and innovations transforming the industry

REGISTER FOR YOUR FREE TICKETS TODAY!

www.sydneybuildexpo.com

WHEN

Wednesday, 7 May:
9:00am - 5:00pm
(evening networking events until 7:00pm)

Thursday, 8 May:
9:00am - 5:00pm

WHERE

ICC Sydney, Exhibition Centre, Halls 1-4, 6 & 7
14 Darling Drive, Sydney NSW 2000

timber

& FORESTRY *e*news

Media partner

TIMBER and Forestry Enews is excited to be an official media partner of the Sydney Build Expo 2025. It's shaping up to be a fantastic event, and our team is looking forward to attending the information sessions,

exploring the latest industry innovations, and connecting with attendees, exhibitors, and presenters. We're proud to support an event that brings together leaders across construction, architecture, and sustainable building solutions.



Premier of New South Wales
Australia

Sydney Build Expo 2025

On behalf of the NSW Government, I extend my warmest welcome to everyone attending the Sydney Build Expo 2025.

In less than a decade, Sydney Build has grown to become the nation's largest construction, architecture and infrastructure show, bringing together more than 35,000 visitors and over 600 exhibitors.

As Premier, I'm pleased to support this exciting event and the many contractors, architects, civil engineers, housebuilders, developers and government representatives who make it such a great success.

The building and construction industries are vital for the future growth of this State. Together, you're helping build the homes, schools, hospitals, roads and public transport that we need to thrive.

I invite you all to drop into the NSW Government Hub to meet with government agencies, hear about the priority projects our government is focused on delivering, and how you can work with us to create a brighter future for our state.

All the best for the expo!

Chris

Chris Minns MP
Premier



SEE PAGE 7 FOR LATEST NEWS ON THE GREAT KOALA PARK

Unravelling the myths of the ‘Tarkine’

WITH the usual antagonists once again ramping up their campaign against logging in Tasmania’s “Tarkine”, it’s important to understand the history of the region, writes Nick Steel, the CEO of Tasmanian Forest Products Association (TFPA).

It’s a tiresome argument at times, but when discussing the area dubbed “the Tarkine” it is vital to appreciate the scale of the region they are talking about and the historical context of its declared boundaries.

There is no doubt that Tasmania’s northwest is a



Nick Steel, CEO of Tasmanian Forest Products Association.
Photo: TFPA

natural beauty, enjoyed by tourists, hikers, holiday makers, farmers, fishers, miners and foresters. Whilst known as the Arthur Pieman Reserves by generations of Tasmanians, the region has in recent decades been christened “The Tarkine” by environmental movement – trying to paint the area as pristine temperate rainforests days away from total destruction. It’s a name that seems to have stuck.

The area stretches around 450,000 hectares. Three quarters of that area is, rightly, already classified under conservation tenures.

stunning part of the world. It’s an area known for its wild coastlines, majestic rainforests and sweeping button grass plains. Much of that beauty is focussed on an area stretching from the Arthur River in the north to the Pieman River in the south and is bound by the west coast and the Murchison Highway.

It’s a region with stunning

Cont P 5

“IT’S VITALLY IMPORTANT TO CALL OUT THE MISTRUTHS

Australian Forest Products Association

AFPA THE LEADING VOICE FOR AUSTRALIA'S FOREST PRODUCTS SECTOR

A note from the Publisher

Advance notice - Next week we will launch an editorial on a unique Insurance specialist offering cover for Forestry plantations and the associated Carbon credits. This underwriter is switched on and ready to help and provide quotes.

PPE Industry provider – The Workwear Store
Have you checked out the savings available to you through The Workwear Store? Don’t forget your industry code TIMBER10 for an additional 10% for all orders over \$200 plus free delivery! They can even

deliver to multiple locations saving you time, effort and money. See the direct link on our website home page by [clicking here](#).

There are a number of positions vacant on our job board with more coming. Check out the page and if you have a position to fill, post it directly on the website for just \$30 plus GST. [Click here](#) to view our jobs board.

Don’t forget to check out our Buy & Sell page and you are welcome to post an advert if you have something to sell. [Click here](#) for more information.

From P 4

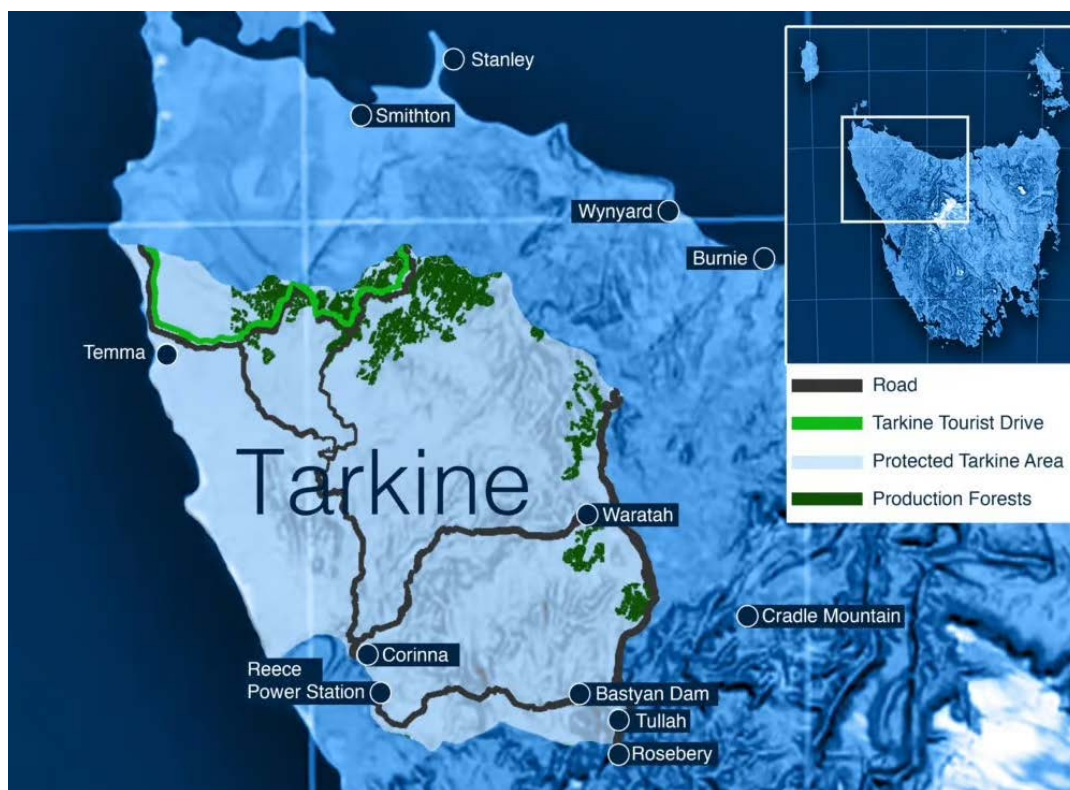
But the truth is that the Tarkine is vast and diverse. Some is wild, windy coastline, some is beautiful button grass plains, some majestic rainforests, some shack communities and townships, some farms, some forestry and some of it mines. It is a beautiful area and Tasmania's Northwesterners know there is a lot to see and a lot to take in.

The small mining town of Waratah is within the Tarkine and the whole eastern border is flanked by the Murchison Highway. The town of Tullah borders the Tarkine, while it flanks the old mining towns of Roseberry and Corinna.

There are significant farmlands within this boundary, in particular in a place called Temma, originally a mining settlement. Savage River and other mines are also within the stated boundary as are the Reece and Bastyan hydro dams and power stations.

In forestry terms, less than 200 hectares is harvested per annum. That's a total of 0.05 percent of the area and all forestry is from managed forests on the outskirts of those border farm pastures.

Almost all the areas



The area that has been nicknamed the Tarkine spans over 450,000 hectares of Northwest Tasmania. Forestry production areas harvest and replant only 200 hectares annually, a mere 0.05 percent of the overall Tarkine area. Image: TFPA

used for forestry have been harvested multiple times over the generations and will be again. It is simply native tree farming, the only difference between this type of farming and others is the length of the growing and harvesting cycle.

But some would have you believe that the Tarkine is one tree away from destruction. That is simply not the case. The area known as the Tarkine is under no threat and all forestry and mining

practices are strictly limited to agreed areas, areas that are miniscule in the scale of the vast protected areas.

The reality is that the Arthur Pieman and surrounding

“ LESS THAN 200 HECTARES IS HARVESTED PER ANNUM... JUST 0.05 PERCENT OF THE AREA ”

areas are a great example of how mining, forestry, recreation and conservation have coexisted in harmony for more than 150 years, well before it was nicknamed the Tarkine and well before the current protesters moved in.

That's why it's vitally important to call out the mistruths when environmental activists call for an end of all commercial activity in "the Tarkine"... once again.

Source: TTN

Promoting sustainable forests and their products

Learn more about Responsible Wood certification.



Read and download the latest Responsible Wood Annual Report.

responsiblewood.org.au





Business Grants

Access state and/or federal funding to grow your business!

Enews has partnered with a professional grant writing business. Watch this space as not all grants are made public. We will publish grants for various states/

territories for our industry here in Enews. Our connection might be available to assist you with eligibility criteria, grant writing, application process and

lodgement. They have a high success rate, so contact us if you would like to make an appointment. Contact: editors@timberandforestrynews.com

Tasmanian Freight Equalisation Scheme

THE Tasmanian Freight Equalisation Scheme provides businesses and individuals with financial assistance to offset the costs of moving goods by sea.

OVERVIEW

The Tasmanian Freight Equalisation Scheme provides financial assistance for the costs incurred shipping eligible non-bulk goods by sea.

The scheme aims to provide Tasmanian industries with equal opportunities to compete in other markets, as Tasmanian shippers do not have the option of transporting goods interstate by road or rail.

The amount of assistance is based on the difference between the freight costs of moving the goods by sea and the notional freight costs of moving them by road over the same distance.

CHECK IF YOU CAN APPLY

There are 3 categories of assistance you can apply for:

Northbound goods

Assistance is available for freight shipping of eligible goods from Tasmania for permanent use or sale on the Australian mainland.

The goods must have been manufactured in Tasmania. Goods manufactured on



As an island state, Tasmania receives a government grant to offset shipping costs, unlike other states with rail or road. Photo: supplied

the mainland or outside of Tasmania are not eligible unless they have undergone a manufacturing process in Tasmania.

Other eligibility criteria apply. Find out more about the eligibility criteria for Northbound Goods by clicking here.

Southbound goods

Assistance is available for manufacturing or mining businesses in Tasmania shipping eligible raw materials, machinery and equipment from the Australian mainland to Tasmania, or people or businesses in primary production in Tasmania shipping eligible raw materials, machinery and equipment used in primary production from the Australian mainland

to Tasmania.

The goods must have been manufactured in mainland Australia, or if imported, have undergone a manufacturing process in mainland Australia.

Other eligibility criteria apply. Find out more about the eligibility criteria for Southbound goods by clicking here.

Intrastate

Assistance is also available for shipments of freight between King Island, Flinders Island and any island in the Furneaux Group and the main island of Tasmania.

Find out more about the eligibility criteria at Intrastate - King Island and the Furneaux Group by clicking here.

Apply for the Tasmanian Freight Equalisation Scheme

Application details:

- Applications may be made at any time.
- Successful applicants will receive reduced costs to transport eligible goods by sea.
- Applicants must be Tasmanian businesses wanting to move goods by sea either north or south bound from the Australian mainland or to one of the approved intrastate islands.

Find out more about your eligibility and how to apply by clicking here.

Contact information

Phone: 13 11 58
Email: tfes.support@servicesaustralia.gov.au

OTHER AVAILABLE GRANTS

- One-off payment for individuals affected by a major disaster. **Click here** for more information.
- Support for innovative businesses and enterprises. **Click here** for more information.
- Loans for commercial and industrial energy customers for energy efficiency initiatives. **Click here** for more information.

MARCH

22: NTHA QLD State Awards – Brisbane City Hall, Brisbane. Join us in celebrating the QLD Timber and Hardware Industry. Contact Tahlia at events@ntha.com.au

25-28: DANA Global Wood Products Supply and Demand Trends Seminar, Global Forest Investment Conference, and WWII Battle of the Bulge Battle sites tour – Europe. Contact admin@dana.co.nz

APRIL

10-11: Forestry Australia 2025 Forest Carbon Summit – National Press Club, Canberra. For full details and to register, visit <https://www.forestry.org.au/2025-forest-carbon-summit/>

MAY

7-8: Sydney Build 25 – ICC, Sydney. Australia's largest construction and design show. Enews is a media partner for Sydney Build 2025. For more details visit <https://www.sydnebuildexpo.com>

14: AFCA National Forum & Dinner – Gold Coast, QLD. SAVE THE DATE. More details to follow.

11-17: Japanese Wood Architecture Tour – Japan.

Tour the world's oldest and most impressive wooden buildings. From Hōryū-ji, the world's oldest wooden building to the World Expo in Osaka - home to the world's largest wooden ring building. For more information and view the program, visit <https://www.woodsolutions.com.au/events/woodsolutions-sponsors-tda-japan-study-tour?>

26-30: LIGNA 25 – Hannover, Germany. The world's leading trade fair for woodworking and wood processing plant, machinery and tools. For more details visit <https://www.ligna.de/en/for-visitors>

30: NTHA SA/NT/WA State Awards – National Wine Centre, Adelaide. Join us in celebrating the SA, NT & WA Timber and Hardware Industry. Contact Tahlia at events@ntha.com.au

JUNE

22-26: World Conference on Timber Engineering – Brisbane. WCTE is the world's leading scientific forum for the presentation of the latest technical and architectural solutions and innovations

in timber construction. For more information visit <https://www.wcte2025.org/event/df0d5655-c16d-47df-b4a6-457a7dc63d96/wcte-2025>

29-JULY 2: 5th International Conference on Timber Bridges – Rotorua, New Zealand. The focus is on timber bridges and the current need for resilient infrastructure to support thriving communities. For more information and to register your interest, visit <https://ictb-conference.org/2025/>

SEPTEMBER

2-3: Timber Queensland Biennial Conference "Doing Timber Business in Queensland" – Brisbane. For more information, email admin@timberqueensland.com.au

OCTOBER

13-14: Timber Construct 2025 – Melbourne. To register your interest, visit <https://timberconstruct.org/>

20-22: International Woodchip and Biomass Seminar and Networking Event – Singapore. For more information visit <https://danaevents.co.nz/2024singapore/home>

20-23: Forestry Australia 2025 Conference – Adelaide Convention Centre, Adelaide. The conference theme is 'Restoring forests and landscapes to secure Australia's future' and aims to develop both local and national collaboration. For more details visit <https://www.forestry.org.au/2025-conference/>

22-23: Melbourne Build 25 – MCEC, Melbourne. Victoria's largest construction and design show. For more details visit <https://melbournebuildexpo.com>

23-24: Field Trip – Vietnam. (Follows on from the woodchip and biomass seminar in Singapore.) For more information visit <https://danaevents.co.nz/2024singapore/fieldtrip>

24: GTTIA – The Barn, Mt Gambier, SA. Nominations are now open for 2025 Green Triangle Timber Industry Awards. Nominate online: <https://gttia.com/nomination-form/> For full details on award categories and submission guidelines, visit: <https://gttia.com/2025-award-categories/>

STOP PRESS - MILL CLOSURE

THE closure of a major sawmill north of Grafton marks the beginning of the anticipated fallout from the proposed Great Koala National Park. With 38 skilled workers now jobless and broader hardwood industry jobs at risk, the warnings raised in Timber & Forestry Enews Issue #838 are fast

becoming reality. Industry leaders say this is just the tip of the iceberg if swift government action isn't taken. More information next week as we delve deeper into the growing impact on regional communities and the \$3 billion timber industry.

A CUT ABOVE...

Do you crosscut timber packs at ± 1 mm accuracy?

Or cut structural timber, panel products (MDF & LVL), paper rolls?

Or produce pallet dimensions or studs on fixed lengths?

HOLTEC has a solution for you!

Our scope of supply:

- Mobile and stationary chainsaws
- Timber crosscut stations
- Log cutting stations
- Circular saws

- Mechanisation
- Sorting lines
- Scanning and optimising systems
- Special systems



For more information contact:

HOLTEC
YOUR PARTNER FOR THE PERFECT CUT

Ph: +64 9 416 8294 // Fax: +64 9 416 8296
Email: sales@holtec.org // Web: www.holtec.org

NZ's pest wallabies: containment and eradication

By MICHAEL SMITH

AMONG the myriads of threats to the health of New Zealand's farmlands, and forests both native and production is the timid and elusive wallaby – introduced from Australia in the late 1800s as an indulgence in the form of hunting and for private zoos.

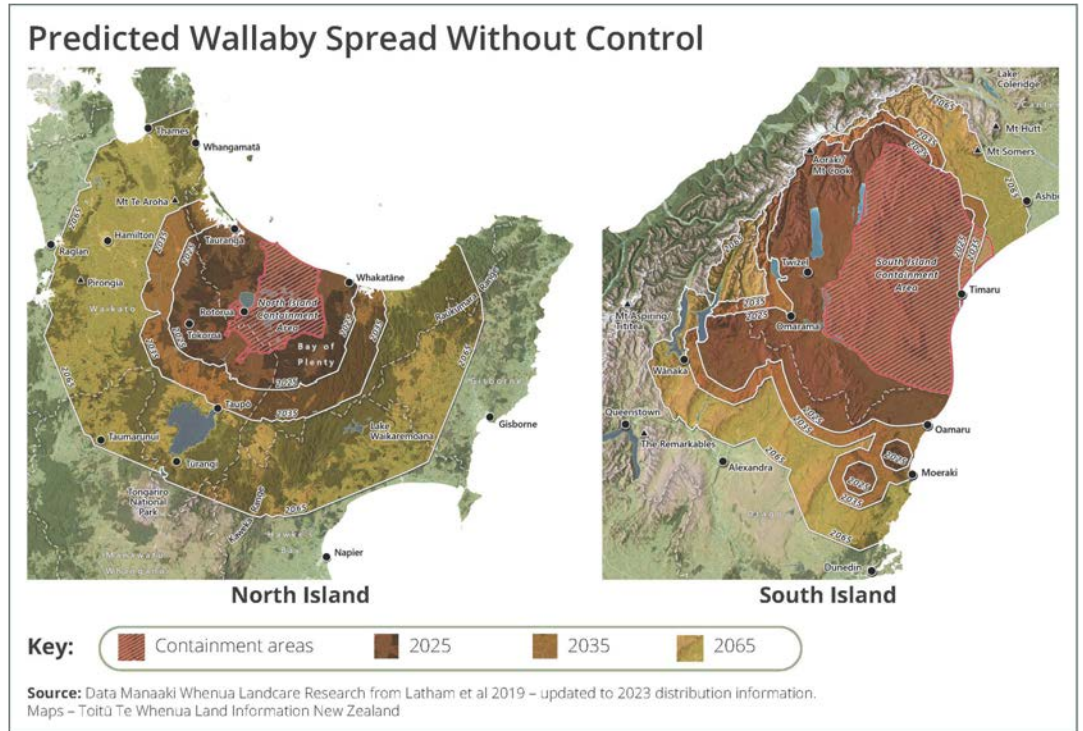
Jacqueline Neave, Team Manager, Pest Management Animals, at Biosecurity New Zealand (Ministry for Primary Industries), says these nocturnal marsupials “compete with livestock for feed, foul pasture areas, damage fences and crops, browse plantation forestry seedlings, affect water quality and can contribute to erosion.

“Pest wallabies affect native bush through browsing on undergrowth and regenerating plants, leading to the loss of native wildlife habitat and food sources, impacting on tangata whenua values and potentially preventing carbon uptake.

“They have become a formidable threat to both agriculture and biodiversity – and, as a result, are classified as an unwanted organism under New Zealand's Biosecurity Act 1993.”

That means they can't be held as pets, bred, sold, moved (transported), released or exhibited without a permit. There are fines of up to \$100,000 and/or five years

“CONTAINMENT AREAS ARE CRUCIAL FIRST STEPS TOWARDS WALLABY ERADICATION



Predicted wallaby spread without control to 2065. Image: Data – Manaaki Whenua Landcare Research. Maps – Toitū Te Whenua Land Information New Zealand.

imprisonment for those who do.

Neave adds that in 2016 Manaaki Whenua Landcare Research (MWLR) estimated there were more than one million pest wallabies in the wild, and that they could spread to over one-third of New Zealand within 50 years.

“MWLR's predictive modelling also estimated total gross economic impacts in 2015 of NZ\$28 million per year – a figure predicted to increase to NZ\$84 million by 2025, based on historical spread rates, and this doesn't include biodiversity impacts.”

Neave says there are two populations of wallabies present on mainland New Zealand: Bennett's wallabies, prevalent in South Canterbury with spread into Otago; and

dama and parma wallabies, centred on the Rotorua Lakes area, with spread into other areas of the Bay of Plenty and parts of the Waikato.

“Under Regional Pest Management Plans [RPMPs], designated areas where wallabies have historically been present – and which have some topographical boundary such as a large river – are called 'containment' areas.

“In the Bay of Plenty this constitutes 260,000 hectares, while Canterbury's containment area is 900,000 hectares. Wallabies have spread further than this and getting them contained to these areas is the first step on the way to eradication.”

Additionally, four species of wallaby are present on

Kawau Island, which is under Auckland Council management. Following an extensive period of consultation with iwi and landowners, site preparation work began last month to get the island ready for wallaby (and possum) eradication.

The impact of pest animals on Kawau's environment is significant, but reversible. Aside from the damage inflicted by possums, rats and stoats, selective browsing by wallabies on indigenous seedlings, plants and young trees has prevented native forest regeneration. This has changed the forest's composition, destroying potential habitats and food sources for threatened indigenous species.

From P 8

If these pest animals are not removed, the forest will continue to decline, raising the risk of erosion and fire. Their continued presence is a significant biosecurity risk to primary industries and the natural environment in mainland Auckland and Northland.

Lisa Tolich, Auckland Council Principal Specialist – Natural Environment

Operations, says the eradication programme “will include setting up infrastructure like a temporary wallaby fence and wildlife camera network, establishing a base, organising equipment and resources, and refining the operational plan as required.



Damage to undergrowth on Kawau Island. Image: Auckland Council



Parma wallaby: present in the Rotorua Lakes area. Image: Ministry for Primary Industries

“The active operational work, including hunting, will begin at the southern end of the island. We expect this to commence in April and continue for a period of 18 months – with a further six months of ongoing monitoring.”

Tolich says the primary eradication methods will include hunting with the use of trained indicator dogs and thermal drones. “Targeted toxins will also be used in localised areas where the monitoring network has revealed there are high numbers of wallabies.”

She adds that wallabies and possums on Kawau Island “have been assessed to be at low-risk of re-incursion from a biosecurity pathways management perspective when compared with rodents or stoats, which are proposed for a separate future eradication effort”.

More on pest wallabies in next week’s edition of Timber & Forestry enews, including the effects of their browsing on production forests, the Tipu Mātoro National Wallaby Eradication Programme, and how wallabies are managed in Tasmania.

**RENEWABLE
SUSTAINABLE
RELIABLE
SECURE**

P: 07 3147 8790
E. sales@vidawood.com

Trees help lower urban temperatures

Microclimate report finds a divide in how Sydney feels the heat.

THE most detailed analysis of urban heat ever carried out in our area has found suburbs near the harbour are up to 15 degrees cooler than those in the south during extreme heat.

The City of Sydney partnered with urban heat experts from Western Sydney University to map our area's microclimates.

Between December 2023 and March 2024, one and a half million measurements were taken using bespoke temperature gauges placed in parks, streets, the foreshore and industrial areas.

The hottest day was 9 December where St Peters saw a high of 45.3 degrees, while at the same time temperatures in the Royal Botanic Garden were 30 degrees.

The forestry industry is already very aware of how trees and sustainable, responsible forestry can help to mitigate climate change. However, carbon capture and storage aren't the only way trees can help with the climate. The concrete, tar, and steel built environment not only creates a lot of emissions during the building process, but it also attracts heat. Trees not only store carbon but help to clean the air and create shade.

"We are already experiencing the impacts of climate change. By 2050, urban heating is predicted to increase temperatures between 1.5 and 3 degrees, so it's vital we plan, invest and adapt," Lord Mayor of Sydney, Clover Moore AO said.

"This study has given us remarkable insights

into Sydney's microclimates and will help us to better target strategies that maintain the liveability of our area, even with the climate changing around us.

"We're increasing tree canopy particularly in areas we know need attention. This will continue to create a cooler, well-shaded city and help reach our ambitious goal of 40% coverage by 2050. And

our work with St Vincent's Hospital ensures vulnerable members of our community can access cooling shelters when the mercury soars."

Areas near green spaces such as Moore Park and Sydney Park had lower mean night-time temperatures. Among the warmest was Central station at Haymarket.

Western Sydney University's Professor Sebastian Pfautsch, from the Urban Transformations Research Centre and School of Social Sciences, said the results will help the City of Sydney cool suburbs and build resilience.

"With summers getting hotter it is vital that governments at all levels work to both mitigate the worst impacts of heat but also adapt and prepare for summers that are trending hotter," Professor Pfautsch said.



Over one million temperature recordings were taken to get a better understanding of how Sydney feels the heat. The recordings were taken by heat sensors placed in key locations over the research period.
Image: Abril Felman / City of Sydney

"The microclimate report shows what needs to be done and where so that everyone not only has access to cool spaces on scorching summer days but also knows where they are.

"Replacing hard surfaces with plants in southern, central and western areas is crucial. We must focus on innovative ways to bring nature back into an urban environment that is dominated by buildings, roads and other materials that only make summers hotter."

Zetland, despite significant development, is well cooled

“WE ARE INCREASING TREE CANOPY PARTICULARLY IN AREAS WE KNOW NEED ATTENTION

by mature urban tree cover, showing the advantages of deliberate urban planning.

Areas along Parramatta Road experience high temperatures, strengthening the City of Sydney's advocacy to make Broadway a cool, green boulevard complete with trees, a cycleway, light rail and more space for people walking.

In the 2023/24 financial year, the City of Sydney added more than 1,100 trees and nearly 80,000 plants in streets and parks.

"We see trees and green spaces as essential infrastructure, as effective and extensive canopy cover can help reduce temperatures on the ground by up to 10 degrees," the Lord Mayor said.

"We have planted over 17,000 street trees and are the only Australian city to increase canopy cover over the last decade."

For more information, read the full report here.

It is clear wood, and trees, truly are the ultimate renewable and Australia should be placing a higher value on our best natural resource.

Source: City of Sydney

Old fire practices rekindled

A new firefighting partnership on the Mid North Coast.

THE Birpai and Bunyah Local Aboriginal Land councils are working with Forestry Corporation to bring together knowledge of cultural burning with government bushfire management.

A fire training camp will be held at Guulabaa – Place of Koala in Cowarra State Forest near Wauchope made possible through Fire, Country and People, a three-year Australian Government-funded project.

Fire and incident management specialists Fireground will provide the accredited firefighting training to members of the Wauchope and Port Macquarie Aboriginal communities from March 17 to March 20.

Forestry Corporation's

Aboriginal Heritage and Partnerships Manager John Shipp said the fire training will provide participants skills and qualifications in firefighting.

"This program creates an opportunity for the Birpai and Bunyah communities to work with government agencies to develop a path forward for effective and sustainable bushfire management combining traditional cultural burning and modern firefighting techniques," Mr Shipp said.



Fire training and shared techniques are vital to improve preparedness, response, and reduce bushfire risk across Australia.. Image: Shutterstock

"This will improve the resilience of the community to major bushfires.

"The use of fire in the environment is only one aspect of the community's land management experience which has existed for sixty-odd

thousand years," he said.

Fire, Country and People will also help to build the scientific evidence base behind cultural burning.

A research program will look to understand the effect that traditional Aboriginal fire practices have on the intensity and extent of bushfires.

The \$3-million Fire, Country and People: Aboriginal Community Disaster Ready Project has received funding from the Australian Government and is jointly funded by Forestry Corporation.

To find out more about Fire, Country and People go to Forestry Corporation's website here.

arxada

IS IT SAFE TO USE PRESERVATIVE - TREATED WOOD FOR MY RAISED GARDEN BED?

Yes!

TANALITH® E Copper Azole treated timber is safe to use around fruit and vegetables!



Tanalised, Tanalith, & Ecowood are registered trademarks of Arxada @ 2023

Guardians of the forest

Women accelerating responsible forestry.

IN celebration of International Women's Day 2025, FSC Australia and New Zealand (FSC ANZ) proudly recognise the invaluable contributions of women in responsible forestry through our campaign, "Guardians of the Forest: Women Accelerating Responsible Forestry." This initiative reflects FSC's commitment to fostering gender equality and diversity across the forest sector.

FSC upholds gender equality as a fundamental principle—ensuring that women and men have equal opportunities to realise their full potential and contribute to economic, social, cultural, and environmental progress. Our certification system actively supports UN Sustainable Development Goal 5: Gender Equality, embedding fairness and inclusivity in forestry practices worldwide.

Through our Guardians of the Forest campaign, we celebrate the women accelerating responsible forestry across Australia and New Zealand in various fields. Their dedication embodies FSC's vision of a more equitable and sustainable industry.

Tolita Davis-Angeles – Chair of the FSC Indigenous Working Group

As Chair of the FSC Indigenous Working Group and a member of the Standards Development Group working on the revision of the Australian National Forest Stewardship Standard, Tolita plays a vital role in



1/ **Hannah Aldridge, PCT Administrator at Australian Bluegum Plantations.** Photo: Australian Bluegum Plantations



2/ **Karen Fifield, Chief Executive of Wellington Zoo Te Nukua and President of the World Association of Zoos and Aquariums.** Photo: Te Nukua Wellington Zoo



3/ **Tolita Davis-Angeles, Chair of the FSC Indigenous Working Group.** Photo: FSC® ANZ

amplifying First Nations' voices within FSC ANZ. Through her work at Gandan Yarnings, she drafted a Free, Prior, and Informed Consent (FPIC) guidance document, providing a key resource for meaningful First Nations engagement.

Emphasising her mission, Tolita shares: "In the Standards Development Group and the Indigenous Working Group, I strive to advocate for responsible forest stewardship and empower the voices of our First Nations people, emphasising the essential value of Indigenous knowledge, traditional practices, and cultural protocols."

Hannah Aldridge – Australian Bluegum Plantations

Hannah's progression from plant operator to PCT Administrator at Australian Bluegum Plantations reflects her commitment to sustainability and responsible resource management.

She shares, "I enjoy

working in the forestry industry because it allows me to combine my passion for sustainability, nature, and responsible resource management. As a woman in this field, I find it rewarding to challenge stereotypes and contribute to a more inclusive and diverse industry."

Karen Fifield – Wellington Zoo

Karen Fifield MNZM MInstD, Chief Executive of Wellington Zoo Te Nukua and President of the World Association of Zoos and Aquariums, has been a driving force for sustainability and conservation. She has led initiatives like the Protecting Our Planet global strategy, the Carbon Reduction Guide, and the Sustainable Forest Use Guide.

Karen remarks, "For a progressive zoo like ours, FSC is so important because it is something that people here in Wellington can do to protect the wild populations of animals that we care for. Our role is

to create that connection between people, animals, and FSC. That's why we chose to become an FSC promotional licence holder and share the FSC message with our visitors."

These stories underscore FSC's dedication to fostering an inclusive environment where women can thrive and lead. By integrating gender equality into our standards and practices, FSC ANZ aims to accelerate action towards a more sustainable and equitable forestry sector and beyond.

This International Women's Day, we honour these Guardians of the Forest and reaffirm our commitment to advancing gender equality. Their stories inspire us to continue building a future where diversity and inclusion are at the heart of responsible forest management.

To view the other profiles we ran, visit FSC ANZ's LinkedIn page by clicking here.



A leader in sustainable forestry with a common goal: protect healthy, resilient forests for all, forever.
Visit us at [fsc.org](https://www.fsc.org)

KOMATSU

Komatsu 895.2

SpeedShift



New Intelligent Transmissions for Increased Productivity

The new Komatsu 895.2 Forwarder offers increased productivity with two unique transmission options;

- SpeedShift ... gear change "on the fly" with high 262kN torque
- Xtreme ... severe/steep conditions with very high 307kN torque
- New Maxi XT Control System

Komatsu Forwarders lead the way in production

KOMATSU
Creating value together

Komatsu Forest Pty Ltd.
11/4 Avenue of Americas
Newington NSW 2127 Australia
T: +61 2 9647 3600
E: info.au@komatsuforest.com

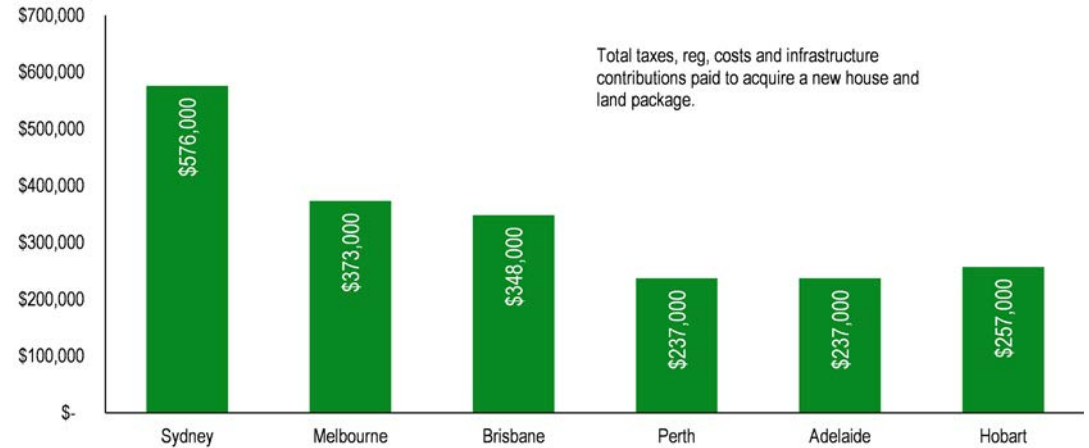
Housing taxation doubles in just five years

HIA has released a report commissioned from the Centre for International Economics (CIE) on Taxation of the Housing Sector. This Report is an update to the work undertaken in 2019.

This Report shows that:

- \$576,000, or half, of the cost of a new house and land package in Sydney is government taxes, regulatory costs and charges.
 - The value of taxes and charges in Sydney has increased by 38 per cent or \$160,000 since the 2019 Report.
 - The largest increase in the value of tax and regulatory imposts was in Brisbane, up by \$179,000 or more than double (+106 per cent) compared to the 2019 Report.
 - It takes over a year to obtain a development approval for subdivision, and up to seven months are attributed to unnecessary delays.
 - \$346,000, or 38 per cent, of the cost of a new apartment in Sydney is government taxes, regulatory costs and charges.
 - The value of the tax and regulatory cost component of a new apartment has increased by \$104,000 or 68 per cent in Brisbane compared to the 2019 Report.
- “Australia has an acute shortage of housing because

Statutory taxes, regulatory costs and infrastructure charges for greenfield houses



The taxes and fees associated with building a new home can be nearly 50% of the cost of the house and land package.



The government has taken a juxtaposed position, both setting high goals for the number of new home builds but also deeply taxing these new builds. Image: Shutterstock

governments continue to tax new home building and impede productivity in the sector,” stated HIA Chief Economist, Tim Reardon.

“In Sydney, governments are adding in excess of half a million dollars to the cost of a new home, that new home buyers are then required to repay for decades as part of their mortgage.

“With half of the cost of a new home being taxes and government charges, new home buyers are spending 15 years of a 30-year mortgage just paying off that tax.

“New home buyers also have to pay interest on top of that tax. Over 30 years, the value of taxes plus the interest on it amounts to more than the value of the home itself.

“With government taxes, fees and charges so high, the term ‘house and

land package’ may as well be changed to ‘house and tax package’.”

“In Brisbane and Adelaide, government taxes, fees and charges on new homes have doubled in five years. Not even the best, legitimate investment strategies could achieve that same level of return.

“The primary solution to resolve Australia’s housing shortages is to remove government taxes and red tape to allow the industry to deliver the homes Australians

are demanding.

“Delays on getting approvals take much longer than the time it takes to actually build a home.

“New home building taxes appear to be the target of governments under fiscal pressure, seeking to find other sources of revenue. What they do not realise is that when they increase taxes on housing, there ends up being fewer of them.

“It is incongruous that governments set home building targets, while at the same time tax new home building even more. The more government tax new homes, the fewer homes will be built.

“Taxes on housing have not resulted in more of them being built. Higher taxes on new housing will only lead to fewer new homes and higher prices for existing homes.

“If governments were keen to solve the affordability problem, they need to look at the tax they are imposing on new housing,” concluded Mr Reardon.

Setting new benchmarks for commercial buildings

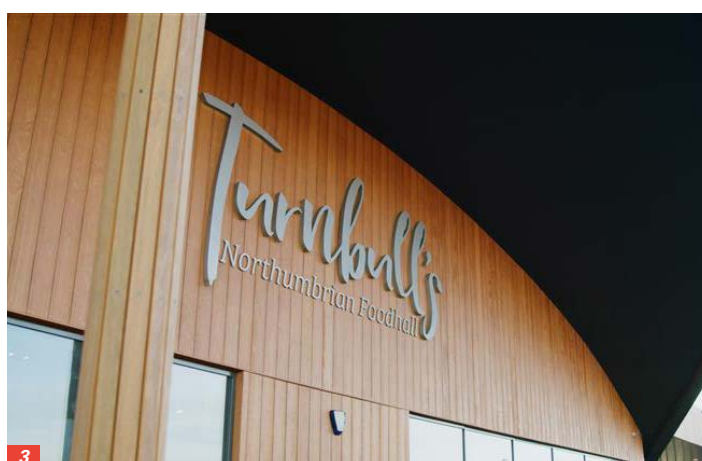
Accoya cladding specified for Willowburn Retail Park, Northumberland.

WILLOWBURN Retail Park in Alnwick, Northeast England, offers a mix of big-name brands and charming independent retailers. Designed to create a modern and sustainable retail destination, the development aims to enhance the local shopping experience while complementing North Northumberland's natural surroundings.

Projekt Architects, the firm behind the design, envisioned a retail park that not only meets the needs of both shoppers and businesses but also prioritises longevity, environmental responsibility, and high-quality design that will serve the community for years to come.

Timber was the ideal aesthetic choice, offering warmth and authenticity to a commercial retail park, however, with many wood species it would require frequent maintenance and replacement. Accoya provided the perfect solution, delivering the natural aesthetic of wood with exceptional durability, minimal upkeep and a 50-year warranty.

Building on the success of Phase One—which welcomed key tenants such as Marks & Spencer and Turnbull Butchers—Phase Two is now complete. This stage of development features



- 1/ *The Willowburn Retail Park was designed to be modern and sustainable whilst complementing the natural surroundings.*
- 2/ *Accoya cladding gives the retail park a stunning, natural look.*
- 3/ *Even after five years, the Accoya cladding still looks brand new and has held up beautifully on the original two units.* All photos: TwoFresh and Drone Studio North East

Accoya-clad unit planned to complete the retail park.

Mark Jansz, Founding Director of Projekt Architects, emphasised the advantages of specifying Accoya, "Accoya opens up a whole world of possibilities for natural timber, overcoming traditional challenges related to warranties and long-term performance. Phase One was completed five years ago, and the Accoya cladding still looks as good as new. The ability to specify a timber product with confidence in its durability and stability is a game-changer."

Justin Peckham, Regional Head of Sales at Accsys highlights the benefits of specifying Accoya for commercial projects, "As a product, Accoya is ideal for commercial projects because it delivers both long-term aesthetic appeal and structural reliability. We know that in five, ten, or fifteen years, it will have maintained its integrity without twisting, or warping, providing complete peace of mind for specifiers and developers alike."

Garry Suggett, Technical Specifications Manager at James Latham said, "We're proud to have supplied our exclusive FinishLine cladding for this project, as this is a great example of how Accoya can redefine commercial architecture. By combining sustainability with outstanding performance, Accoya ensures that Willowburn Retail Park continues to set new benchmarks for commercial developments that balance environmental and design aspirations."

“ACCOYA ENSURES LONG-TERM STRUCTURAL RELIABILITY AND AESTHETIC APPEAL FOR COMMERCIAL PROJECTS”

FinishLine cladding from James Latham, comprised of Accoya, machined and factory finished in a Sansin

coating, and installed by Alderclad. It has delivered two new units, B&M and Mountain Warehouse, with a further

LIGNA 2025 highlighting engineered wood

LIGNA 2025 will perfectly showcase the key role of wood-based materials in sustainable construction, with a focus on 'ENGINEERED WOOD'.

When the natural material wood meets cutting-edge technology and expert craftsmanship, the result is 'ENGINEERED WOOD.' With this focus topic, LIGNA 2025, will provide an ideal platform for exhibitors such as Minda, Weinig, Grenzebach, Schiele, Dieffenbacher, Reichenbacher Hamuel, and Globe Machine Manufacturing. They will showcase new applications, systems, and machines for intelligently designed timber products that are shaping the future of construction.

CO₂-binding wood-based materials are gaining importance as a sustainable alternative to concrete and steel, which generate significant emissions. Engineered wood also enables streamlined prefabrication processes and promotes the efficient use of wood resources. It also plays a key role in advancing the circular economy.

"At LIGNA 2025, the focus topic 'ENGINEERED WOOD' will showcase the full spectrum of pioneering solutions that unlock the potential of solid wood and wood-based materials," says Stephanie Wagner, Head of LIGNA at Deutsche Messe. "From joinery machines to automated production lines for manufacturing CLT and other solid wood products, as well as robots and robotic systems for assembling and joining wooden elements, drying systems, and treatment



1 & 2/ Companies including Minda and Weinig will be able to showcase full pieces of machinery, allowing attendees to see the latest equipment firsthand. Images: LIGNA

technologies for wood finishing – right through to software solutions for planning, designing, and producing mass timber structures – everything will be on display at LIGNA 2025 under the focus theme 'ENGINEERED WOOD.'

CUSTOMISED PRODUCTION SYSTEMS

Minda Industrieanlagen GmbH will showcase its latest customised production systems for glued laminated timber products. In 2020, the company introduced the TimberPress X 100 eco, a CLT press capable of fully automated production of cross-laminated timber panels, including window and door cut-outs.

"LIGNA is the most important platform for Minda to present our innovative and future-oriented products to an international trade audience," says Robert Falch, Managing Partner of Minda Industrieanlagen GmbH. He adds, "We want to use it again in 2025 to showcase our user-friendly, fully automated systems and present our new developments. We are confident that our systems and machines are ideally suited to the current and future

opportunities and challenges of the industry, thanks to maximum technical availability and optimised personnel deployment. As always, LIGNA offers the best opportunity to convince potential customers of this."

Minda aims to impress with the resource efficiency, reliability, and high performance of its systems presented in Hanover, offering a comprehensive package tailored to discerning customers. This package includes planning, engineering, production—including initial commissioning at Minda's premises – installation, final commissioning, operator training, and system optimisation. Minda works flexibly with the user's project team or delivers the complete system as a general contractor. Upon request, quality control systems, finger-jointing lines, planning machines, and other processing and packaging machines can be integrated into the production line. In addition to boosting performance, a key focus of recent developments has been improving resource efficiency to minimise wood consumption during production.

NEW STANDARD IN WOODWORKING ANNOUNCED

A long-standing exhibitor since the very beginning, Weinig will once again be present at LIGNA 2025, celebrating 50 years of the world's leading trade fair alongside its own 120-year company history. The Tauberbischofsheim-based company continues its legacy of success with innovative exhibits, demonstrating its commitment to shaping the future of woodworking.

At LIGNA 2025, Weinig will be stronger than ever, showcasing both proven solutions for individual requirements in wood-based panel and solid wood processing, as well as an impressive array of new developments in Hall 27. This year, the focus will be on Weinig System Solutions, offering customised and holistic solutions in the CLT sector.

On more than 5,000 square meters of exhibition space, the Weinig Group will present over 45 running machines and solutions live, giving visitors from around the world an up-close experience of its

From P 16

advanced technologies. As a provider of one of the most comprehensive portfolios in the engineered wood sector, Weinig aims to set a new standard in woodworking.

A key highlight at LIGNA 2025 will be a 3D-animated CLT production line, brought to life on a large LED wall, complete with a virtual factory tour. Additionally, interactive screen stations will allow visitors to analyse and plan individual projects together with the Weinig System Solutions team. The Essetre Multiwall surface processing machine, featuring a 6-axis processing unit, will demonstrate groundbreaking possibilities in production, showcasing sophisticated solutions for CLT and timber frame construction – paving the way for the next level in timber house construction.

INSULATION MATERIALS MADE FROM RENEWABLE RAW MATERIALS

The wood industry is a key business area for global automation partner Grenzebach, making its presence at LIGNA 2025

the perfect opportunity to showcase new products.

“LIGNA provides us with a valuable meeting place to engage with customers and industry professionals while gaining insights into current trends,” says Robert Brier, CEO of Grenzebach BSH. “At the same time, we use the trade fair to present ourselves as an experienced and reliable solution provider for today’s challenges. As a technology company, we also think ahead: with a focus on the future, we offer energy-efficient drying solutions for veneer processing and systems for producing flexible wood fiber insulation materials from renewable raw materials – developed to meet the highest industry demands and standards,” Brier adds.

At LIGNA 2025, Grenzebach will present cutting-edge veneer drying technologies, ranging from individual dryers with manual loading and unloading to complete veneer drying lines with integrated inspection, sorting, and stacking solutions. Designed to accommodate the unique properties of different products, these solutions prioritise maximum energy

efficiency.

Beyond classic veneer drying, Grenzebach also develops innovative production solutions for insulation materials made from renewable raw materials. Its systems enable the production of high-quality, environmentally friendly, and safe-to-process flexible insulation mats from wood fibers. With excellent thermal insulation values, diffusion openness, and soundproofing properties, these mats are ideal for both new construction and renovation projects.

Grenzebach supports its customers throughout the entire process, from planning and implementing production facilities to long-term operational support. The after-sales team helps users optimise system performance over time and adapt to evolving requirements through modernisation.

These are just a few of the 1,337 exhibitors that have registered for LIGNA 2025. The tradeshow will also cover AI optimised wood-based panel production, clever robot automation solutions, LIGNA. TruckStop and LIGNA.Circular.



Timber Media
AUSTRALASIA

Timber & Forestry Enews is an authoritative and rapid deliverer of news and special features to the timber and forest-based industries in Australia, New Zealand and internationally. *Enews* is delivered weekly, every Thursday, 48 weeks of the year. Advertising rates are competitive with other industry publications. *Timber & Forestry Enews* hits your target market – every week, every Thursday!

HEAD OFFICE

Timber Media Australasia Pty Ltd
PO Box 3001
Maraylya NSW 2765

PUBLISHER

Timber Media Australasia Pty Ltd

EDITORS

Nicky Ainley
Donyale Harrison
Jess Hockridge
editors@timberandforestryenews.com

ADVERTISING

Campbell McInnes // +61 (0) 406 223 007
campbellm@timberandforestryenews.com

ACCOUNTS

Chris Parker // +61 (0) 413 710 203
cparker@ttnews.com.au

SUBSCRIBE

www.timberandforestryenews.com



The information contained in this publication has been obtained from sources assumed to be reliable. However, the publishers disclaim all warranties as to the accuracy, completeness, reliability or adequacy of the information displayed. Opinions expressed in *Timber & Forestry Enews* are not necessarily those of directors or the *Timber & Forestry Enews* team. We do not accept responsibility for any damage resulting from inaccuracies in editorial or advertising. The publishers are therefore indemnified against all actions, suits, claims or damages resulting from content in this publication.

Job position to fill?

For as little as A\$10.00 per week, you can advertise your positions vacant on our dedicated eNews jobs web page.

Job ad: A\$30.00 for 3 weeks

Prices exclude GST.

CLICK TO ADVERTISE

timber
& FORESTRY *Enews*

Contact Campbell McInnes at
campbellm@timberandforestryenews.com



Image: VirdaWood

CLASSIFIED ADVERTISING

PRODUCTS & SERVICES

For Sale as a Going Concern

Expression of Interest – Closing 25th April 2025

Tecbeam Australasia Pty. Ltd.

Consolidate Production & Supply Chain
**Steel Web Manufacturing,
Beam Fabrication, & Distribution**

For Further Information Contact:
enquiries@tecbuild.com.au
www.tecbuild.com.au

- Tecbeam joists are an Australian designed and patented product.
- A 28-year product history – Tecbeam has been proven in thousands of projects across Class 1, 2, 5, 8 and 9b developments.
- The premier timber-flange floor joist for strength, stiffness and structural capability.
- Patents and all Intellectual Property
- Steel Stamping Machinery
- Proprietary Stamping Dies



EMPLOYMENT

LATEST JOBS:

- Siviculture Forester
- Senior Harvest Forester
- Business Development Manager
- Chief Executive Officer
- Account Manager
- Trade Account Manager
- Customer Service Representative

Click to apply

ADVERTISING RATES

DISPLAY AD RATES

FULL PAGE: \$560
297mmH x 210 mmW

HALF PAGE: \$330
Vertical • 256mmH x 93mmW
Horizontal • 125mmH x 190mmW

THIRD PAGE: \$250
Horizontal • 73mmH x 190mmW

QUARTER PAGE: \$220
Vertical • 125mmH x 93mmW
Horizontal • 63mmH x 190mmW

BANNER ADVERTISING PACKAGES

• PREMIUM PACKAGE: \$195
FRONT PAGE publication module, email and website modules

- Front page module • 68mmW x 45mmH
- Top email banner • 1200pxW x 145pxH
- Home page website banner • 1000pxW x 120pxH

• STANDARD PACKAGE: \$135
PAGE 6 (or similar) module, email newsletter and website module

- Module • 93mmW x 63mmH
- Email module • 336pxW x 336pxH
- Website module • 720pxW x 744pxH

CLASSIFIED ADVERTISING

JOB / BUY & SELL ADS: ONLINE & IN PUBLICATION
720pxW x 744pxH - all ads to be in jpg format

TERM DISCOUNTS

12 WEEKS: 7.5% 24 WEEKS: 10% 48 WEEKS: 15%

All pricing is excluding GST and based on a weekly booking. Overseas bookings are exempt from GST. Banner advertising packages are a minimum 12 week booking.

DEADLINES

Display ads: Book by 9.00am Tuesday prior to publication.
Supplied artwork: 12noon Tuesday prior to publication.

Supply hi-res jpg or pdf to our specifications. This is a digital publication, therefore **NO crop marks or bleed is required.**

Classified advertising: JOB ADS ARE COMPLETED ONLINE.

Go to www.timberandforestrynews.com/post-a-job/ to place a job vacancy. **Book by 12noon Tuesday prior to publication.** Job ads are for individual positions. If more than one position is to be advertised, separate ads will need to be created and advertised accordingly.

BUY & SELL ADS ARE COMPLETED ONLINE. Go to www.timberandforestrynews.com/product/buy-sell-advertisement/ to place an ad. **Book by 12noon Tuesday prior to publication.**

PAYMENT TERMS

New clients invoiced on booking. Existing clients 14 days. All other standard Terms & Conditions apply.

CONTACTS

Media releases and editorial:

Nicky Ainley // Donyale Harrison // Jessica Hockridge
e: editors@timberandforestrynews.com

Display ad bookings:

Campbell McInnes // e: campbellm@timberandforestrynews.com

Accounts:

Chris Parker // e: cparker@ttnews.com.au

Have some news to share?

Send media releases, news stories, events, any timber and forestry news related information with us anytime to Nicky, Donyale and Jess -

editors@timberandforestrynews.com

timber
& FORESTRY *e*NEWS

Contact Nicky,
Donyale or Jess today...